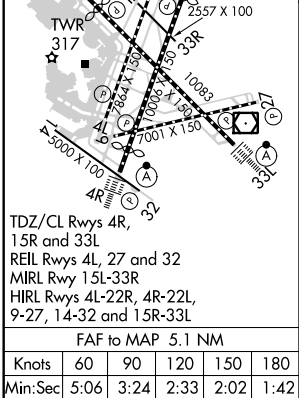
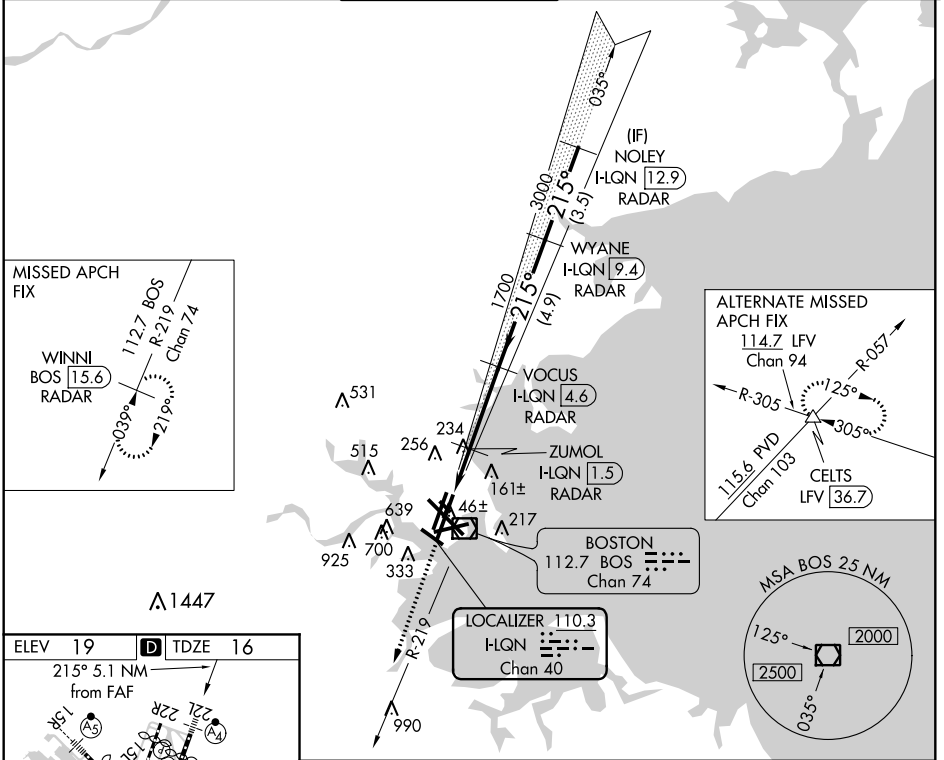


| | | |
|--|------------------------|---|
| LOC/DME I-LQGN 110.3 Chan 40 | APP CRS 215° | Rwy Idg 8806 TDZE 16 Apt Elev 19 |
|--|------------------------|---|

ILS or LOC RWY 22L

GENERAL EDWARD LAWRENCE LOGAN INTL (BOS)

| | | | | | |
|---|--------------------------------------|--|--------------------------------|--|-------|
| RADAR required for procedure entry. DME or RADAR required. | | | MALSF | MISSED APPROACH: Climb to 3000 on BOS VOR/DME R-219 to WINNI/ BOS 15.6 DME/RADAR and hold. | |
| Inop table does not apply to S-ILS 22L. Circling NA for Cats C and D west of Rwy 4L and 15R. Circling NA to Rwy 14. | | | | | |
| D-ATIS 135.0 | BOSTON APP CON 120.6 263.1 | BOSTON TOWER 128.8 257.8 (WEST) 132.225 257.8 (EAST) | GND CON 121.9 121.75 | CLNC DEL 121.65 257.8 | CPDLC |



| | | | | | | |
|---|----------------------|----------------------|------------------|---|------------------|-------------------|
| ELEV 19 TDZE 16 | 215° 5.1 NM from FAF | 3000 | WINNI BOS 15.6 | VGSI and ILS glidepath not coincident (VGSI Angle 3.00/TCH 71). | WYANE I-LQGN 9.4 | NOLEY I-LQGN 12.9 |
| 215° 5.1 NM from FAF | 215° | BOS R-219 *LOC only. | ZUMOL I-LQGN 1.5 | VOCUS I-LQGN 4.6 | I-LQGN 9.4 | I-LQGN 12.9 |
| TWR 317 | 215° | | I-LQGN 1.5 | RADAR | RADAR | RADAR |
| 2357 X 100 | 215° | | *I-LQGN 0.9 | 1700 | 1700 | 4000 |
| 1000 X 100 | 215° | | | | | GS 3.00° TCH 55 |
| 1001 X 150 | 215° | | | | | |
| 5000 X 100 | 215° | | | | | |
| 4R | 215° | | | | | |
| 32 | 215° | | | | | |
| 22L | 215° | | | | | |
| 22R | 215° | | | | | |
| 15L | 215° | | | | | |
| 15R | 215° | | | | | |
| 4L | 215° | | | | | |
| 4R | 215° | | | | | |
| 33L | 215° | | | | | |
| 33R | 215° | | | | | |
| 15L-33R | 215° | | | | | |
| 4L-22R, 4R-22L, 9-27, 14-32 and 15R-33L | 215° | | | | | |
| FAF to MAP 5.1 NM | 215° | | | | | |
| Knots 60 90 120 150 180 | 215° | | | | | |
| Min:Sec 5:06 3:24 2:33 2:02 1:42 | 215° | | | | | |

| | | | | |
|-----------|-------------------------|---------------------------|------------------------|----------------------|
| CATEGORY | A | B | C | D |
| S-ILS 22L | 216/40 200 (200-¾) | | | |
| S-LOC 22L | 540/40 | 524 (600-¾) | 540-1¼ | 524 (600-1¼) |
| CIRCLING | 960-1¼ 941 (1000-1¼) | 1060-1½ 1041 (1100-1½) | 640-1¾ 621 (700-1¾) | 640-2 621 (700-2) |

NE-1, 10 SEP 2020 to 08 OCT 2020

NE-1, 10 SEP 2020 to 08 OCT 2020