

LOC/DME I-DGU 111.3 Chan 50	APP CRS 272°	Rwy ldg 7001 TDZE 17 Apt Elev 19
---	------------------------	---

ILS or LOC RWY 27

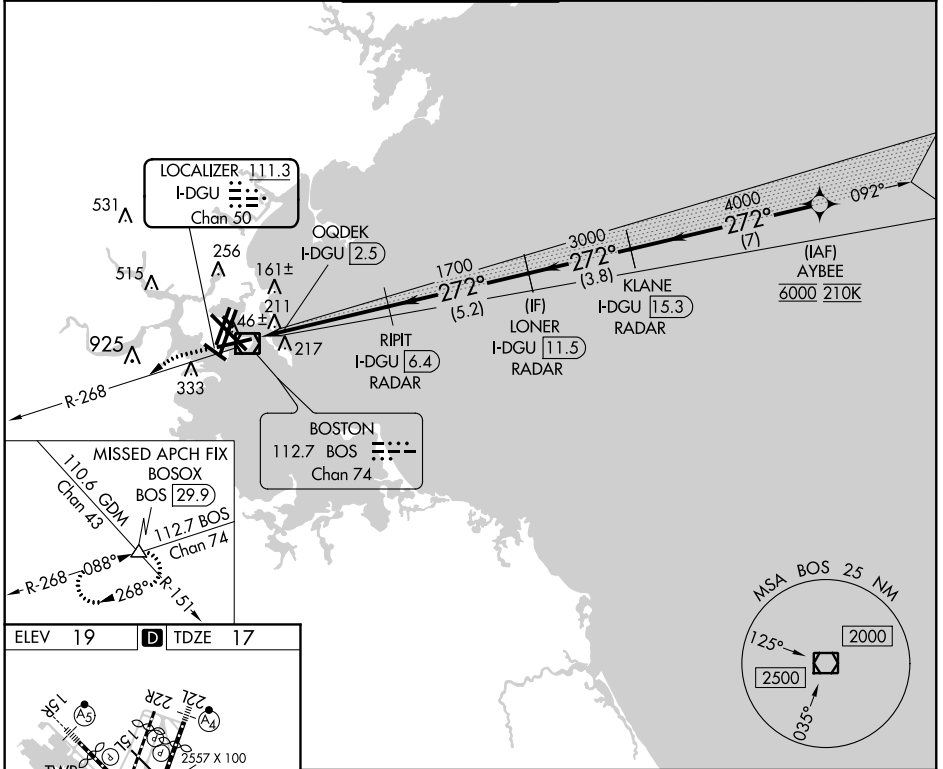
GENERAL EDWARD LAWRENCE LOGAN INTL (BOS)

DME or RADAR required. RADAR required for procedure entry.
From AYBEE: RNAV 1-GPS required.

MISSED APPROACH: Climb to 3000
on BOS VOR/DME R-268 to
BOSOX INT/BOS 29.9 DME and hold.

- ▼ Circling NA to Rwy 14.
- ▲ Circling NA for Cats C and D west of Rwy 4L and 15R.

D-ATIS 135.0	BOSTON APP CON 120.6 263.1	BOSTON TOWER 128.8 257.8 (WEST) 132.225 257.8 (EAST)	GND CON 121.9 121.75	CLNC DEL 121.65 257.8	CPDLC
------------------------	--------------------------------------	--	--------------------------------	---------------------------------	-------



NE-1, 10 SEP 2020 to 08 OCT 2020

NE-1, 10 SEP 2020 to 08 OCT 2020

ELEV 19	D	TDZE 17
---------	----------	---------

TDZ/CL Rwy 4R, 15R and 33L
REIL Rwy 4L, 27 and 32
MIRL Rwy 15L-33R
HIRL Rwy 4L-22R, 4R-22L, 9-27, 14-32 and 15R-33L

FAF to MAP 3.9 NM

Knots	60	90	120	150	180
Min:Sec	3:48	2:32	1:54	1:31	1:16

3000 BOSOX △

BOS R-268

QOQDEK I-DGU 2.5

RIPIT I-DGU 6.4 RADAR

LONER I-DGU 11.5 RADAR

KLANE I-DGU 15.3 RADAR

AYBEE

6000

GS 3.00° TCH 57

3000	1700	1700	3000	4000	6000
1.2	3.9 NM	5.2 NM	3.8 NM	7 NM	
CATEGORY	A	B	C	D	
S-ILS 27		460-1½	443 (500-1½)		
S-LOC 27		460-1½	443 (500-1½)		
CIRCLING	940-1½ 921 (1000-1½)	1040-1½ 1021 (1100-1½)	620-1¾ 601 (700-1¾)	620-2 601 (700-2)	