

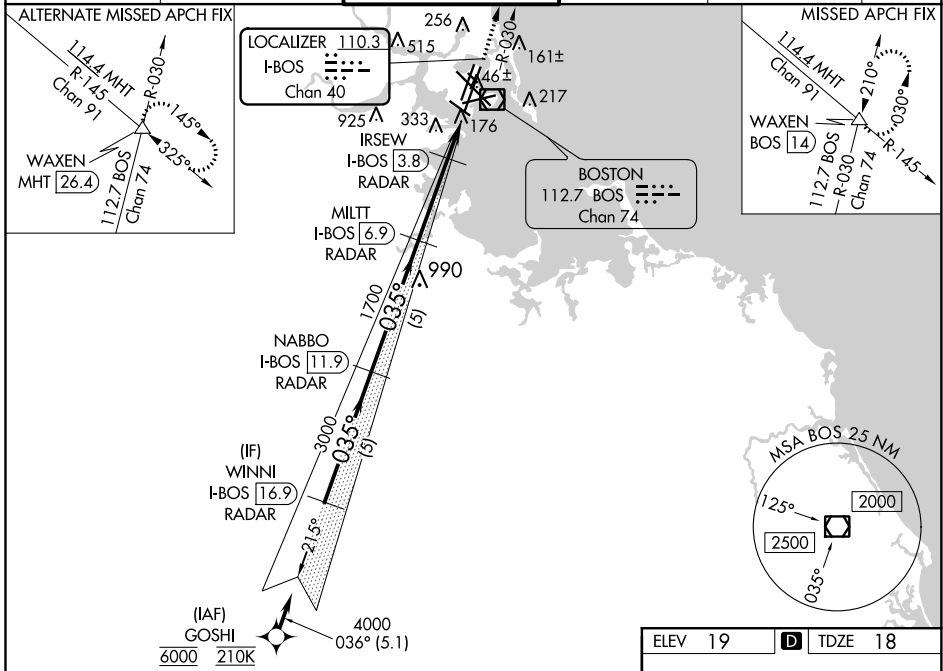
LOC/DME I-BOS 110.3 Chan 40	APP CRS 035°	Rwy Idg TDZE Apt Elev	8851 18 19
--	------------------------	-----------------------------	---------------------------------------

ILS or LOC RWY 4R

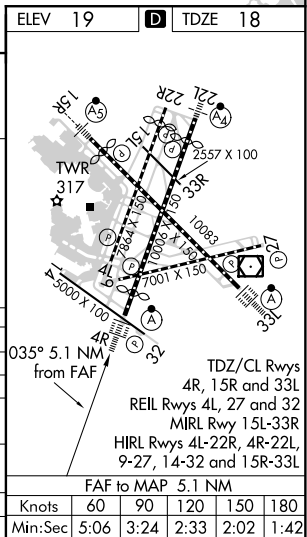
GENERAL EDWARD LAWRENCE LOGAN INTL (BOS)

RNAV 1-GPS or RADAR required for procedure entry. DME or RADAR required.		ALSF-2 	MISSED APPROACH: Climb to 3000 on BOS VOR/DME R-030 to WAXEN INT/BOS 14 DME and hold.
	# For inop ALS, increase S-LOC 4R Cat A/B visibility to RVR 5500; Rwy 4R helicopter visibility reduction below 4000 RVR NA. **When vessels taller than 144 feet present, S-ILS 4R NA.		

D-ATIS 135.0	BOSTON APP CON 120.6 263.1	BOSTON TOWER 128.8 257.8 (WEST) 132.225 257.8 (EAST)	GND CON 121.9 121.75	CLNC DEL 121.65 257.8	CPDLC
------------------------	--------------------------------------	--	--------------------------------	---------------------------------	-------



GOSHI	VGSi and ILS glidepath not coincident WINNI (VGSi Angle 3.00/TCH 67).		3000	WAXEN
I-BOS 16.9 RADAR	NABBO I-BOS 11.9 RADAR	MILT I-BOS 6.9 RADAR	IRSEW I-BOS 3.8 RADAR	BOS R-030
6000	4000	3000	1700	* I-BOS 2.9
GS 3.00° TCH 51	036°	035°	035°	I-BOS 1.8
	5.1 NM	5 NM	5 NM	3.1 NM
				0.9 NM
				1.1 NM
CATEGORY	A	B	C	D
S-ILS 4R		218/18	200 (200-½)	
S-LOC 4R	440/24	422 (500-½)	440/40	422 (500-¾)
CIRCLING	940-1¼ 921 (1000-1¼)	1040-1½ 1021 (1100-1½)	620-1¾ 601 (700-1¾)	620-2 601 (700-2)
** APPROACH MINIMA WHEN CONTROL TOWER REPORTS TALL VESSELS IN APPROACH AREA				
S-ILS 4R		374/40	356 (400-¾)	
S-LOC 4R #		440/40	422 (500-¾)	



NE-1, 10 SEP 2020 to 08 OCT 2020

NE-1, 10 SEP 2020 to 08 OCT 2020