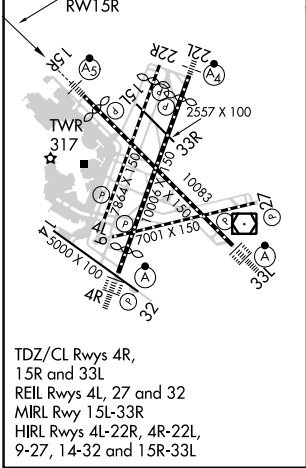
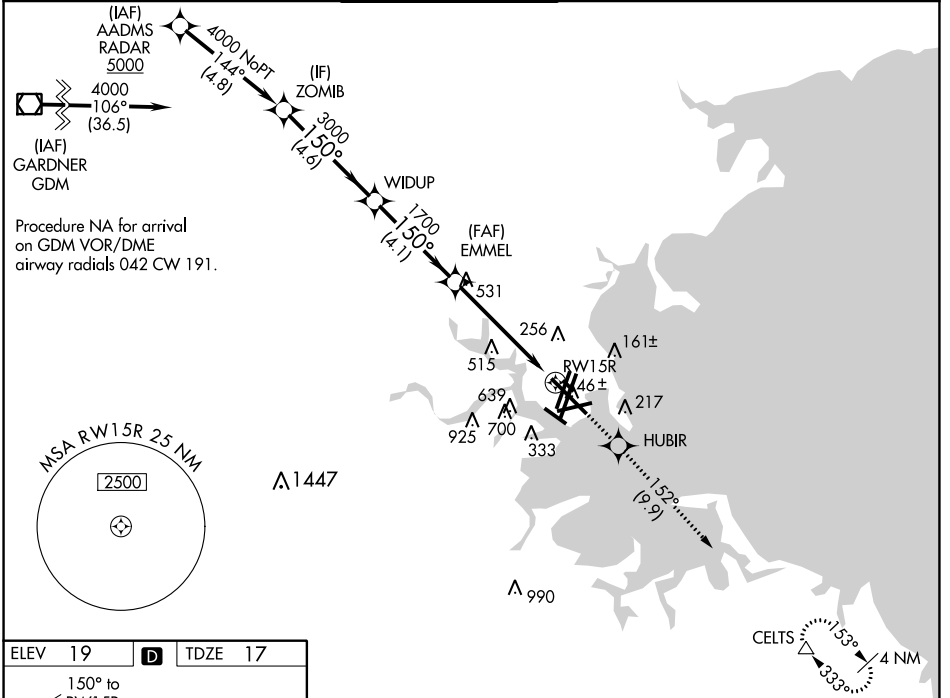


WAAS CH 42925 W15A	APP CRS 150°	Rwy ldg TDZE Apt Elev	9201 17 19
--	------------------------	-----------------------------	---------------------------------------

RNAV (GPS) RWY 15R

GENERAL EDWARD LAWRENCE LOGAN INTL (BOS)

RNP APCH.		MALSR		MISSED APPROACH: Climb to 3000 direct HUBIR and on track 152° to CELTS and hold.		
<p>▼ For uncompensated Baro-VNAV systems, LNAV/VNAV NA below -15°C or above 54°C. Circling NA to Rwy 14. Circling NA for Cats C and D west of Rwys 4L and 15R. For inop ALS, increase LNAV Cats C and D visibility to 1 3/8 SM.</p>						
D-ATIS 135.0	BOSTON APP CON 120.6 263.1	BOSTON TOWER 128.8 257.8 (WEST) 132.225 257.8 (EAST)		GND CON 121.9 121.75	CLNC DEL 121.65 257.8	CPDLC



VGSi and RNAV glidepath not coincident (VGSi Angle 3.00/TCH 71).				3000	HUBIR	CELTS
				↑	✧	tr 152°
				*LNAV only.		
ZOMIB				4000	WIDUP	EMMEL
				150°	1700	*1.7 NM to RWY15R
GP 3.00°				3000		
TCH 60						
				4.6 NM	4.1 NM	3.4 NM
				1.7 NM		
CATEGORY	A	B	C	D		
LPV DA	217/18			200 (200-1/2)		
LNAV/VNAV DA	567-1 1/8			550 (600-1 1/8)		
LNAV MDA	620/24	603 (700-1/2)	620-1 3/8	603 (700-1 3/8)		
CIRCLING	940-1 1/4	1040-1 1/2	620-1 3/4	620-2		
	921 (1000-1 1/4)	1021 (1100-1 1/2)	601 (700-1 3/4)	601 (700-2)		

NE-1, 10 SEP 2020 to 08 OCT 2020

NE-1, 10 SEP 2020 to 08 OCT 2020