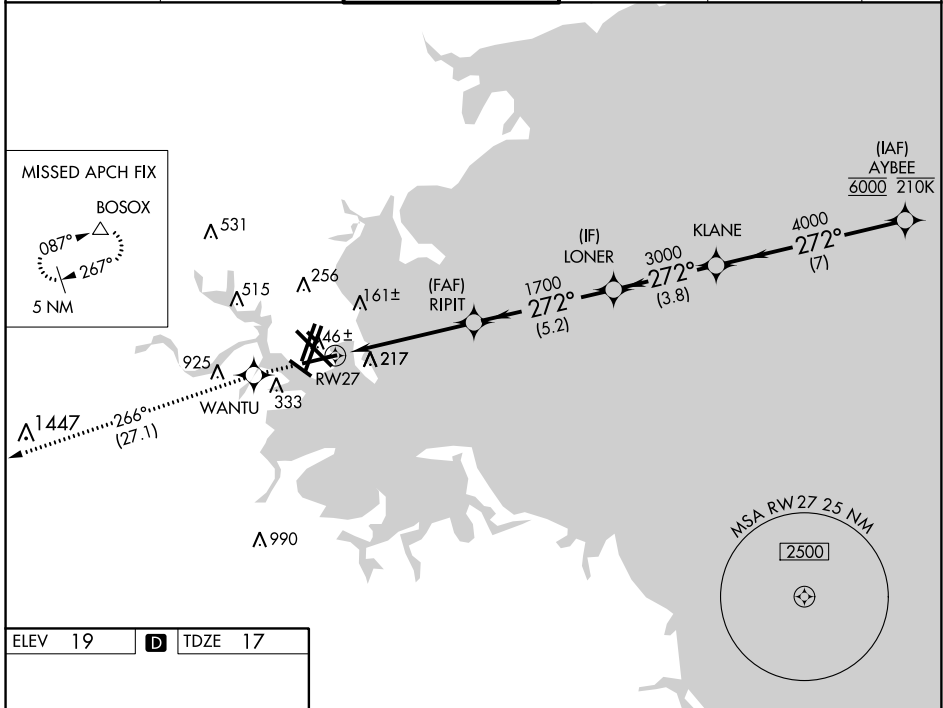


APP CRS	Rwy Idg	<b>7001</b>
<b>272°</b>	TDZE	<b>17</b>
	Apt Elev	<b>19</b>

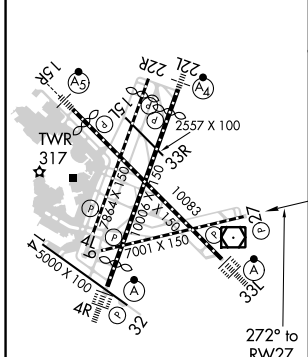
# RNAV (GPS) RWY 27

GENERAL EDWARD LAWRENCE LOGAN INTL (BOS)

RNP APCH.		For uncompensated Baro-VNAV systems, LNAV/VNAV NA below -15°C or above 54°C. Circling NA to Rwy 14.		MISSED APPROACH: Climb to 3000 direct WANTU and on track 266° to BOSOX and hold.	
D-ATIS	BOSTON APP CON	BOSTON TOWER	GND CON	CLNC DEL	CPDLC
<b>135.0</b>	<b>120.6 263.1</b>	<b>128.8 257.8 (WEST)</b> <b>132.225 257.8 (EAST)</b>	<b>121.9 121.75</b>	<b>121.65 257.8</b>	



ELEV 19	<b>D</b>	TDZE 17
---------	----------	---------



TDZ/CL Rws 4R, 15R and 33L  
 REIL Rws 4L, 27 and 32  
 MIRL Rwy 15L-33R  
 HIRL Rws 4L-22R, 4R-22L, 9-27, 14-32 and 15R-33L

3000	WANTU	tr 266°	BOSOX	VGSI and RNAV glidepath not coincident (VGSI Angle 3.00/TCH 71).	AYBEE	
*LNAV only.	RIPIT	LONER	KLANE	6000	GP 3.00° TCH 57	
	1700	3000	4000			
	1.7 NM	3.4 NM	5.2 NM	3.8 NM	7 NM	
CATEGORY	A		B		C	D
LNAV/VNAV DA	510-1 <sup>3</sup> / <sub>8</sub>		493 (500-1 <sup>3</sup> / <sub>8</sub> )			
LNAV MDA	640-1 <sup>1</sup> / <sub>2</sub> 623 (700-1 <sup>1</sup> / <sub>2</sub> )		640-1 <sup>3</sup> / <sub>8</sub> 623 (700-1 <sup>3</sup> / <sub>8</sub> )			
<b>C</b> CIRCLING	940-1 <sup>1</sup> / <sub>4</sub> 921 (1000-1 <sup>1</sup> / <sub>4</sub> )		1040-1 <sup>1</sup> / <sub>2</sub> 1021 (1100-1 <sup>1</sup> / <sub>2</sub> )		620-1 <sup>3</sup> / <sub>8</sub> 601 (700-1 <sup>3</sup> / <sub>8</sub> )	620-2 601 (700-2)

NE-1, 10 SEP 2020 to 08 OCT 2020

NE-1, 10 SEP 2020 to 08 OCT 2020