

WAAS CH 50124 W04A	APP CRS 035°	Rwy Idg 8851 TDZE 18 Apt Elev 19
--	------------------------	---

RNAV (GPS) RWY 4R

GENERAL EDWARD LAWRENCE LOGAN INTL (BOS)

RNP APCH.

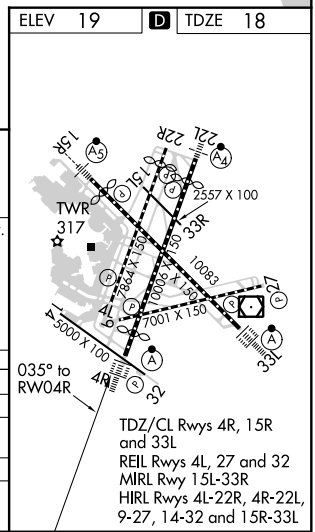
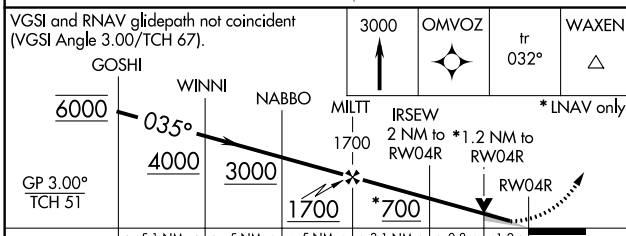
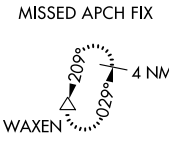
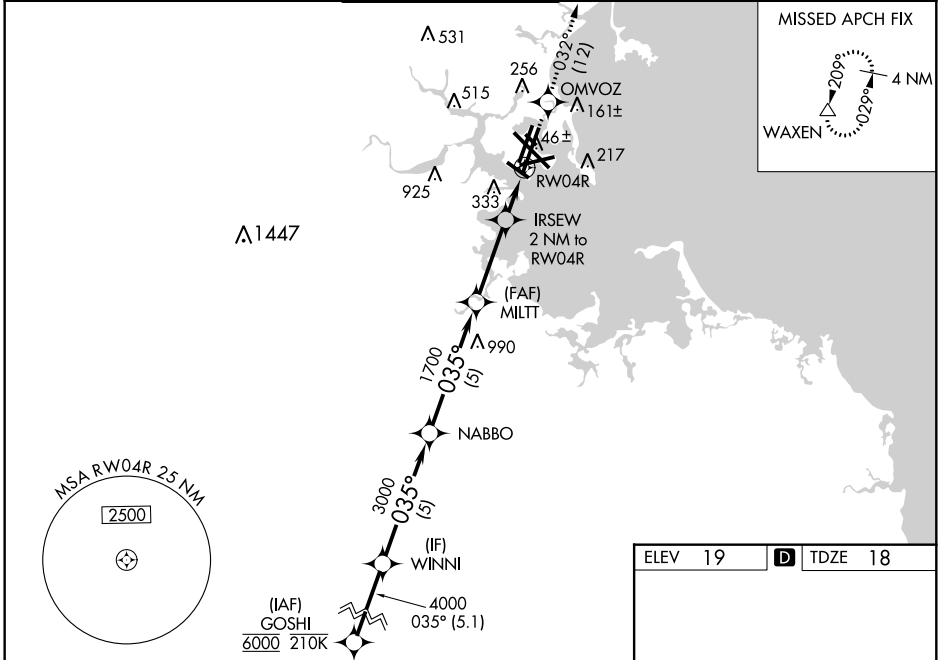
⚠ Circling NA to Rwy 14. Circling NA for Cats C/D west of Rwy 4L and 15R.
⚠ For inop ALS increase LNAV/VNAV all Cats visibility to 1 3/8 SM. When control tower reports tall vessels in approach area: increase LPV DA to 374 and all Cats visibility to RVR 4000, increase LNAV Cat A/B visibility to RVR 4000; for inop ALS with tall vessels increase LNAV/VNAV all Cats visibility to 1 3/8 SM, LNAV Cat A/B visibility to RVR 5500 and LNAV Cat C/D to 1 3/8 SM. For tall vessels Rwy 4R helicopter visibility reduction below RVR 4000 NA. When vessels taller than 144 feet present, LPV and LNAV/VNAV NA.
 For uncompensated Baro-VNAV systems, LNAV/VNAV NA below -16°C or above 54°C.

ALSF-2



MISSED APPROACH:
 Climb to 3000 direct
 OMVOZ and on track
 032° to WAXEN and
 hold.

D-ATIS 135.0	BOSTON APP CON 120.6 263.1	BOSTON TOWER 128.8 257.8 (WEST) 132.225 257.8 (EAST)	GND CON 121.9 121.75	CLNC DEL 121.65 257.8	CPDLC
------------------------	--------------------------------------	--	--------------------------------	---------------------------------	-------



CATEGORY	A	B	C	D
LPV DA		218/18	200 (200-1/2)	
LNAV/VNAV DA		514/50	496 (500-1)	
LNAV MDA	480/24	462 (500-1/2)	480/50	462 (500-1)
C CIRCLING	940-1 1/4 921 (1000-1 1/4)	1040-1 1/2 1021 (1100-1 1/2)	620-1 3/4 601 (700-1 3/4)	620-2 601 (700-2)

NE-1, 10 SEP 2020 to 08 OCT 2020

NE-1, 10 SEP 2020 to 08 OCT 2020