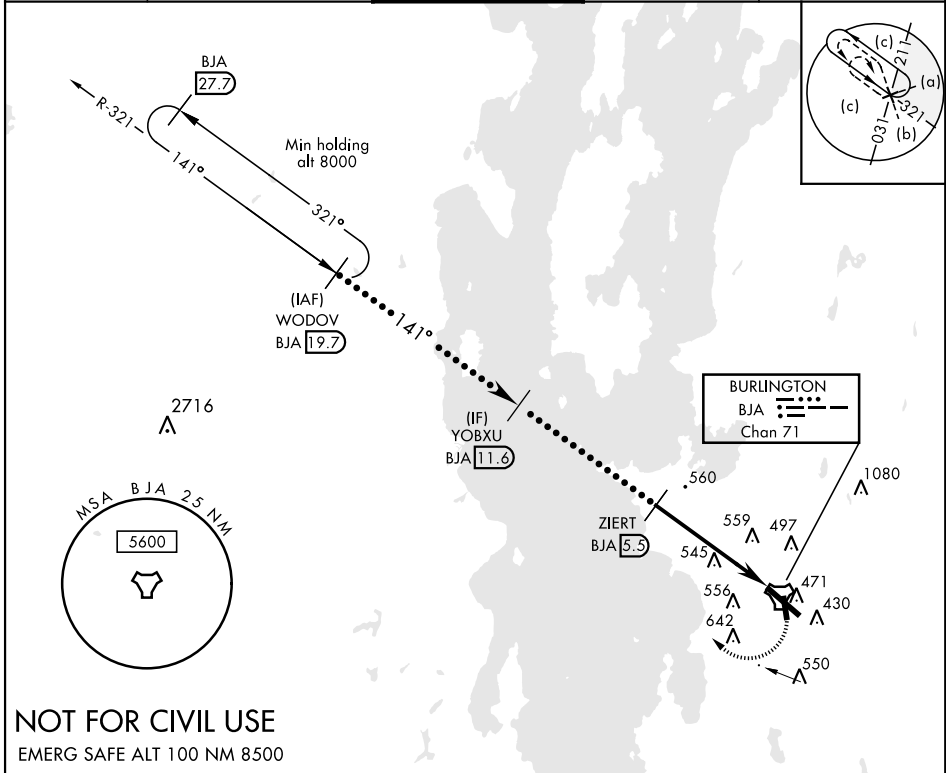


HI-TACAN RWY 15

TACAN BJA Chan 71	APCH CRS 141°	Rwy ldg TDZE Arprt Elev 7819 326 335	JAL-70 [USAF]	BURLINGTON INTL (KBTV)
<p>▼ Night Landing: RWY 1 NA. ▲ *When ALS inop, increase CAT C/D/E vis to 1½ mile.</p>		<p>MALSR A5</p>	<p>MISSED APPROACH: Climbing right turn to 8000 on BJA R-321 to WODOV / BJA 19.7 DME and hold, continue climb-in-hold to 8000.</p>	

ATIS 123.8 269.9	BURLINGTON APP CON 121.1 278.8	BURLINGTON TOWER ★ 118.3 (CTAF) 0257.8	GND CON 126.3 348.6	CLNC DEL 119.15
----------------------------	--	--	-------------------------------	---------------------------



NOT FOR CIVIL USE
EMERG SAFE ALT 100 NM 8500

<p>WODOV 19.7</p> <p>8000</p> <p>141°</p> <p>3900</p> <p>YOBXU 11.6</p> <p>2000</p> <p>ZIERT 5.5</p> <p>TACAN</p> <p>ZIBVO 0.5</p> <p>3.6</p> <p>1.5</p> <p>3.05° TCH 51</p>	<p>8000</p> <p>WODOV BJA 19.7</p> <p>ELEV 335</p> <p>D TDZE 326</p> <p>Rwy 1 ldg 3887' Rwy 19 ldg 3612' Rwy 33 ldg 7819'</p> <p>GL 349</p> <p>331' x 78'</p> <p>141° 5.1 NM from FAF</p> <p>TWR 441</p> <p>A 380</p> <p>A 471</p> <p>A 430</p> <p>A 471</p> <p>A 430</p> <p>A 550</p> <p>A 556</p> <p>A 642</p> <p>A 545</p> <p>A 559</p> <p>A 497</p> <p>A 380</p> <p>A 471</p> <p>A 430</p> <p>A 550</p> <p>A 343</p> <p>A 33</p>												
<table border="1"> <tr> <th>CATEGORY</th> <th>C</th> <th>D</th> <th>E</th> </tr> <tr> <td>S-15*</td> <td>820/50</td> <td>494</td> <td>(500-1)</td> </tr> <tr> <td>CIRCLING</td> <td>1200-2½ 865 (900-2½)</td> <td>1380-3 1045 (1100-3)</td> <td>1420-3 1085 (1100-3)</td> </tr> </table>	CATEGORY	C	D	E	S-15*	820/50	494	(500-1)	CIRCLING	1200-2½ 865 (900-2½)	1380-3 1045 (1100-3)	1420-3 1085 (1100-3)	<p>MIRL Rwy 1-19</p> <p>HIRL Rwy 15-33</p>
CATEGORY	C	D	E										
S-15*	820/50	494	(500-1)										
CIRCLING	1200-2½ 865 (900-2½)	1380-3 1045 (1100-3)	1420-3 1085 (1100-3)										

HI-TACAN RWY 15

NE-1, 10 SEP 2020 to 08 OCT 2020

NE-1, 10 SEP 2020 to 08 OCT 2020