

LOC/DME I-BTV <b>110.3</b> Chan <b>40</b>	APP CRS <b>146°</b>	Rwy Idg TDZE Apt Elev	<b>7820</b> <b>326</b> <b>335</b>
---	------------------------	-----------------------------	---

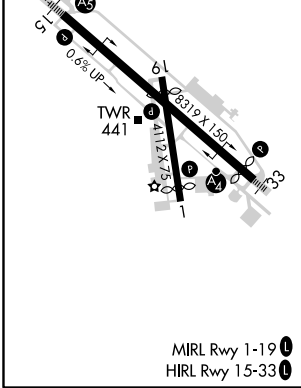
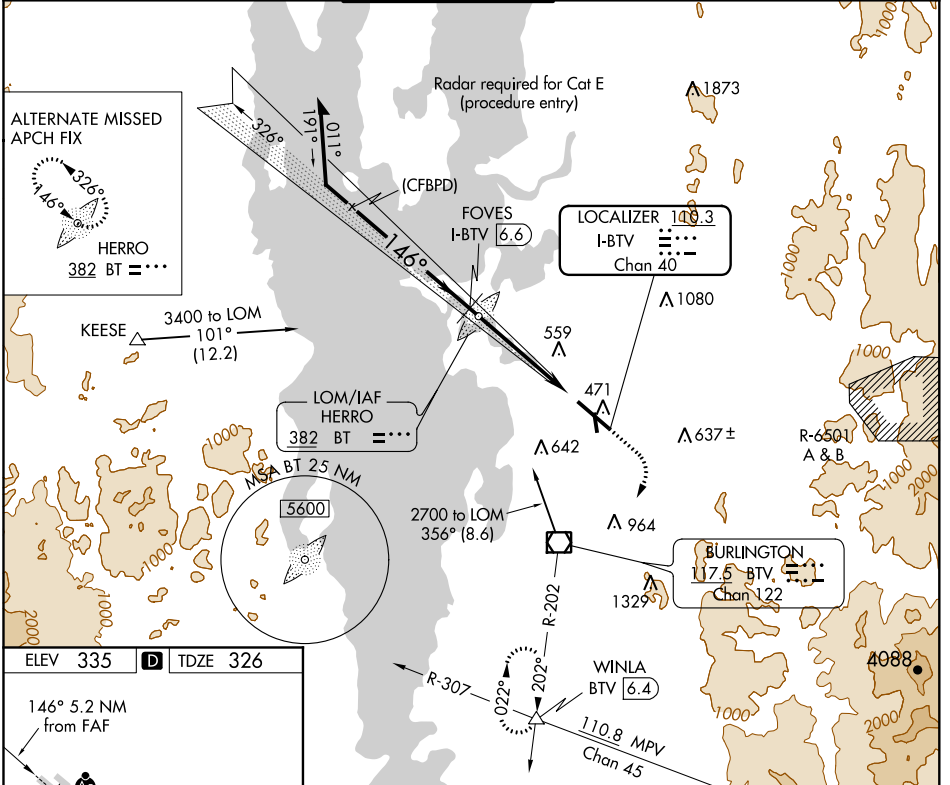
# ILS or LOC/DME RWY 15

BURLINGTON INTL (BTV)

**▲** For inop ALS, increase S-LOC 1.5 Cat C, D, and E visibility to RVR 6000. ADF or DME required. Circling Rwy 1 NA at night.  
**❄** -10°C \* RVR 1800 authorized with the use of FD or AP or HUD to DA.

**MALSR** MISSED APPROACH: Climb to 800 then climbing right turn to 3000 direct BTV VOR/DME on BTV VOR/DME R-202 to WINLA INT/BTV 6.4 DME and hold.

ATIS <b>123.8 269.9</b>	BURLINGTON APP CON ★ <b>121.1 278.8</b>	BURLINGTON TOWER ★ <b>118.3 (CTAF) 257.8</b>	GND CON <b>126.3 348.6</b>	CLNC DEL <b>119.15</b>	UNICOM <b>122.95</b>
----------------------------	--	---	-------------------------------	---------------------------	-------------------------



Remain within 10 NM	BT LOM	800	3000	BTV	BTV R-202	WINLA
	2400	↑	↷	□	△	
2200	FOVES I-BTV (6.6)	* LOC only.		* I-BTV (2.5)	Procedure turn NA for Cat E.	
2000	2000					
GS 3.00° TCH 51						
		4.1 NM		1.1 NM		

CATEGORY	A	B	C	D	E
S-ILS 15	* 526/24 200 (200-½)				
S-LOC 15	700/24	374 (400-½)	700/35 374 (400-½)		
CIRCLING	840-1 505 (600-1)	860-1 525 (600-1)	1200-2½ 865 (900-2½)	1380-3	1045 (1100-3)

NE-1, 10 SEP 2020 to 08 OCT 2020

NE-1, 10 SEP 2020 to 08 OCT 2020