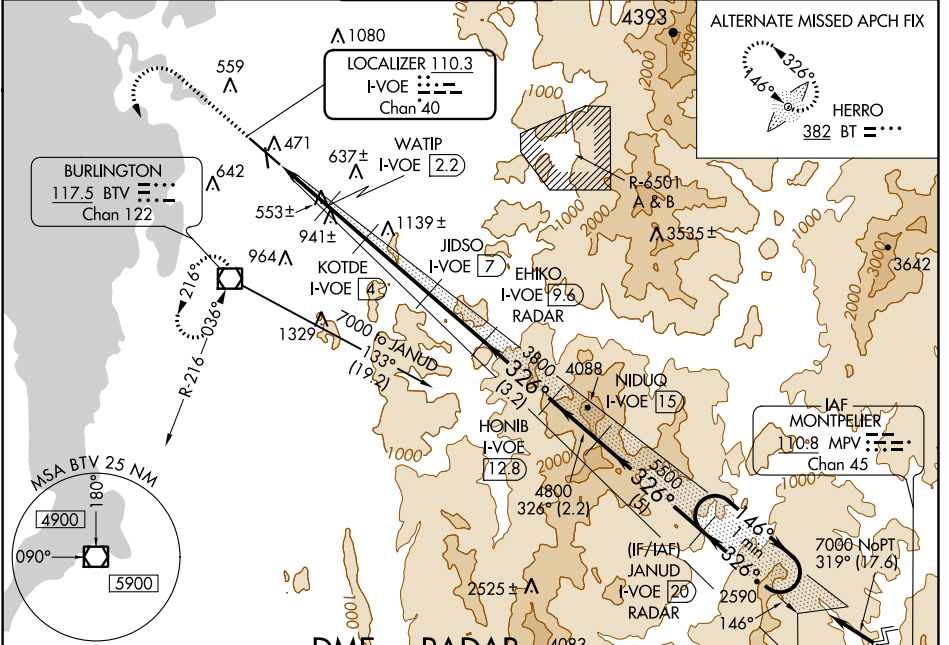


LOC/DME I-VOE <b>110.3</b> Chan 40	APP CRS <b>326°</b>	Rwy Idg TDZE Apt Elev	<b>7819</b> <b>335</b> <b>335</b>
--	------------------------	-----------------------------	---

# ILS or LOC/DME RWY 33

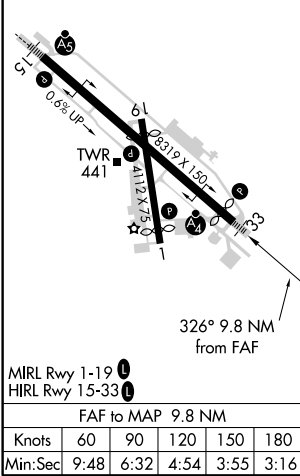
BURLINGTON INTL (BTV)

<b>⚠</b> Circling to Rwy 1 NA at night. Inoperative table does not apply to S-LOC 33 Cats C, D, and E. Inoperative table does not apply to S-ILS all Cats. Autopilot coupled approaches NA.	<b>MALSF</b>	MISSED APPROACH: Climb to 1200 then climbing left turn to 2800 direct BTV VOR/DME and hold, continue climb-in-hold to 2800.			
ATIS <b>123.8 269.9</b>	BURLINGTON APP CON * <b>121.1 278.8</b>	BURLINGTON TOWER * <b>118.3 (CTAF) 257.8</b>	GND CON <b>126.3 348.6</b>	CLNC DEL <b>119.15</b>	UNICOM <b>122.95</b>



ELEV 335	<b>D</b>	TDZE 335
----------	----------	----------

## DME or RADAR REQUIRED



	1200	2800	BTV	
* LOC only	WATIP I-VOE 2.2	JIDSO I-VOE 9.6	EHIKO I-VOE 12.8	NIDUQ I-VOE 15
I-VOE DME Ant.	KOTDE I-VOE 4	RADAR 3800	HONIB I-VOE 12.8	JANUD I-VOE 20
	1240	1800	2900	3800
	0.2	1.2	1.8	3
	3	2.6	3.2	2.2
	5			

CATEGORY	A	B	C	D	E
S-ILS 33	535/40	200 (200-¾)	585/50	250 (300-1)	NA
S-LOC 33	820/40	485 (500-¾)	820/60 485 (500-1¼)	820-1½ 485 (500-1½)	820-1¾ 485 (500-1¾)
<b>C</b> CIRCLING	840-1 505 (600-1)	860-1 525 (600-1)	1200-2½ 865 (900-2½)	1380-3	1045 (1100-3)

NE-1, 10 SEP 2020 to 08 OCT 2020

NE-1, 10 SEP 2020 to 08 OCT 2020