

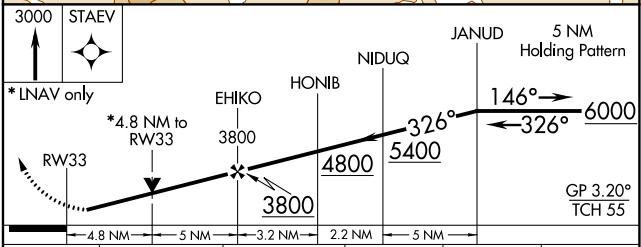
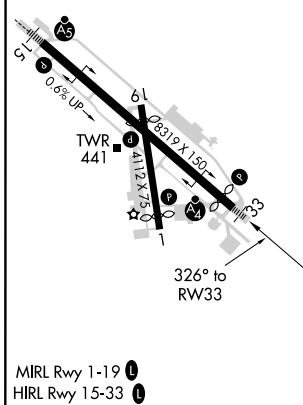
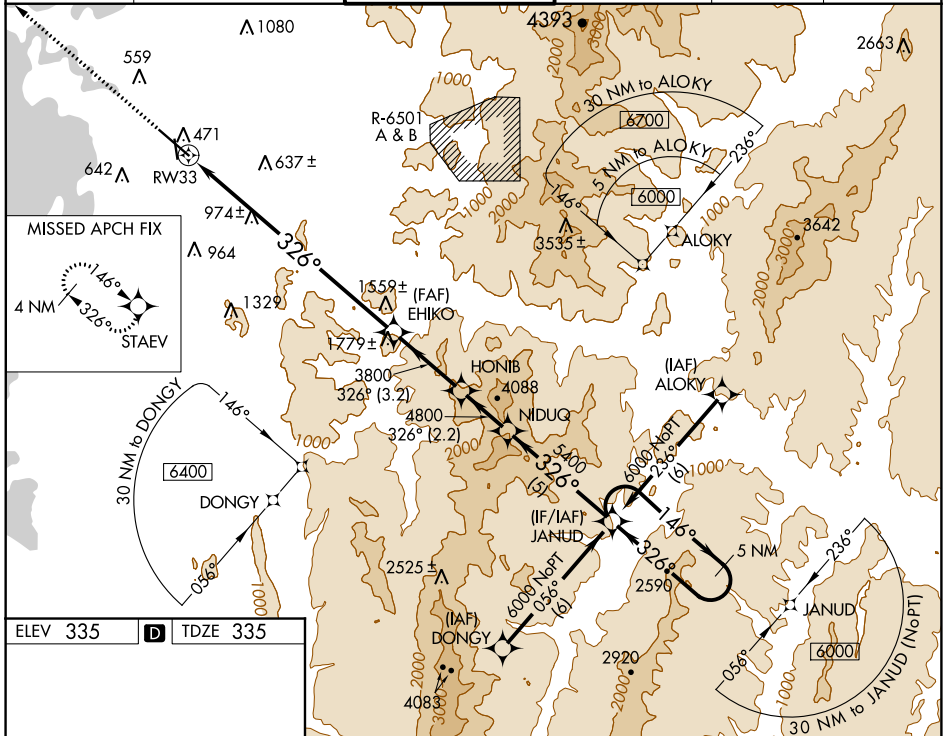
WAAS CH <b>65812</b> <b>W33A</b>	APP CRS <b>326°</b>	Rwy Idg TDZE <b>335</b> Apt Elev <b>335</b>	<b>7819</b>
--	------------------------	---	-------------

# RNAV (GPS) Z RWY 33

BURLINGTON INTL (BTV)

RNP APCH.	MALSF	MISSED APPROACH: Climb to 3000 direct STAEV and hold.
<p>Inoperative table does not apply. For uncompensated Baro-VNAV systems, LNAV/VNAV NA below -1.5°C (5°F) or above 54°C (130°F). Rwy 33 helicopter visibility reduction below ¾ SM NA.</p> <p>-10°C</p>		

ATIS <b>123.8 269.9</b>	BURLINGTON APP CON * <b>121.1 278.8</b>	BURLINGTON TOWER * <b>118.3 (CTAF) 0 257.8</b>	GND CON <b>126.3 348.6</b>	CLNC DEL <b>119.15</b>	UNICOM <b>122.95</b>
----------------------------	--	---	-------------------------------	---------------------------	-------------------------



CATEGORY	A	B	C	D	E
LPV DA	535/40	200 (200-¾)	585/50	250 (300-1)	
LNAV/VNAV DA	1782-5 1447 (1500-5)				
LNAV MDA	2000/60 1665 (1700-1¼)	2000-1½ 1665 (1700-1½)	2000-3	1665 (1700-3)	

NE-1, 10 SEP 2020 to 08 OCT 2020

NE-1, 10 SEP 2020 to 08 OCT 2020