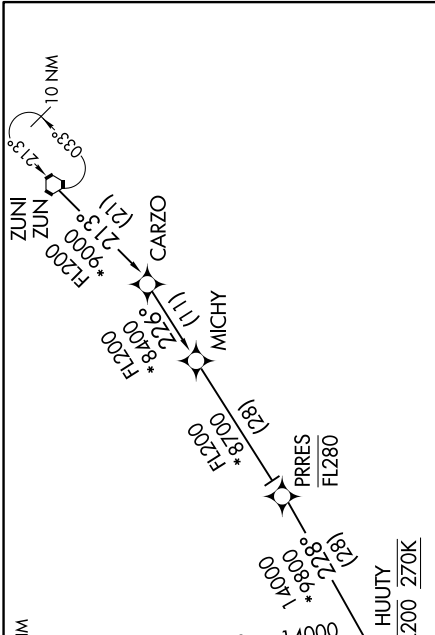


SW-4, 10 SEP 2020 to 08 OCT 2020

- PHOENIX APP CON
124.9 353.8
- PHOENIX-MESA GATEWAY TOWER *
120.6 289.4
- PHOENIX-MESA GATEWAY GND CON
128.25 275.8
- PHOENIX-MESA GATEWAY ATIS *
133.5 270.275
- FALCON FIELD ATIS
118.25
- CHANDLER MUNI ATIS
128.325

NOTE: Turbojet aircraft only.
 NOTE: GPS required.
 NOTE: RADAR required.
 NOTE: RNAV 1.



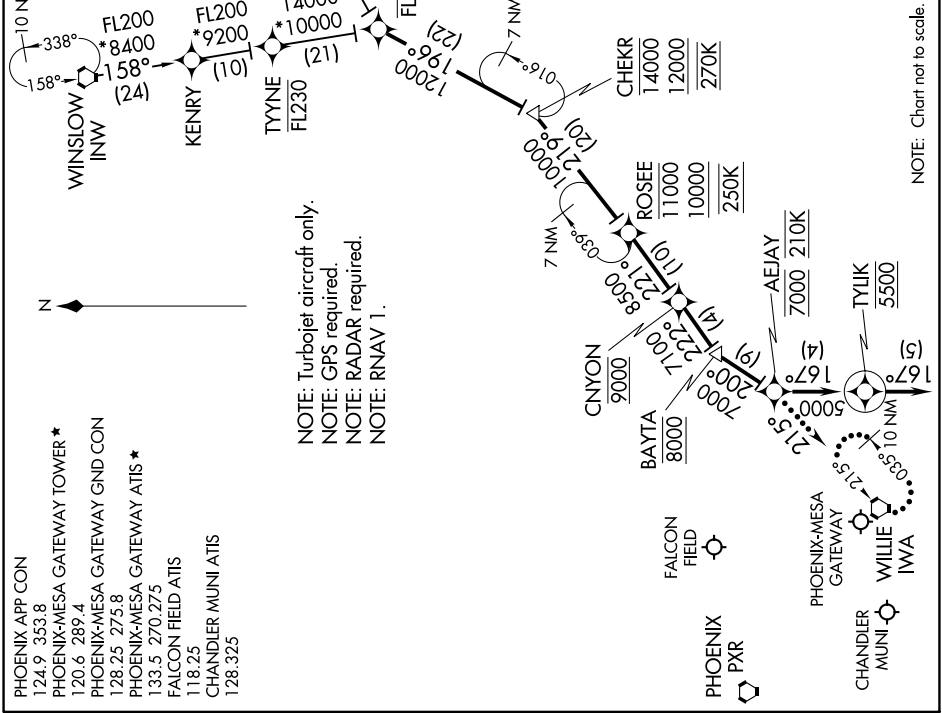
ARRIVAL ROUTE DESCRIPTION

WINSLOW TRANSITION (INW.HUUTY1)
ZUNI TRANSITION (ZUNI.HUUTY1)

From HUUTY on track 196° to CHEKR. Cross CHEKR between 12000 and 14000 and at 270 KTS. From CHEKR via 219° track to ROSEE, cross ROSEE between 10000 and 11000 and at 250 KTS. From ROSEE via 221° track to CNYON, cross CNYON at 9000, from CNYON via 222° track to BAYTA, cross BAYTA at 8000, from BAYTA via 200° track to AEJAY, cross AEJAY at 7000 and at 210 KTS, from AEJAY via 167° track to TYLIK, cross TYLIK at 5500, then on 167° heading. Expect RADAR vectors to final approach course.

LOST COMMUNICATIONS:

After AEJAY on track 215° direct IWA VORTAC.
 Hold NE, LT, 215° inbound, maintain 7000.



NOTE: Chart not to scale.

SW-4, 10 SEP 2020 to 08 OCT 2020