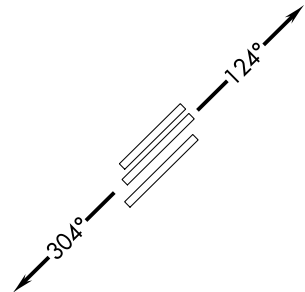


SW-4, 10 SEP 2020 to 08 OCT 2020

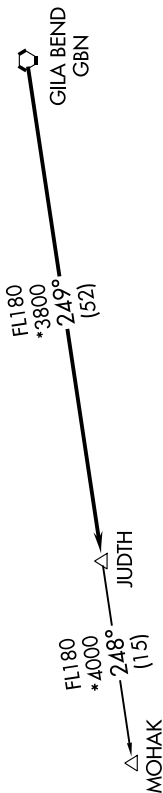
**TOP ALTITUDE:  
ASSIGNED BY ATC**



ATIS \*  
133.5 270.275  
CLNC DEL  
135.05  
GND.CON  
128.25 275.8  
GATEWAY TOWER \*  
120.6 289.4  
PHOENIX DEP CON  
124.9 353.8

RNAV 1.  
NOTE: Turboprops and turboprops only.  
NOTE: RADAR required.  
NOTE: GPS required.  
NOTE: Aircraft departing KGEU and KGYR ATC assigned only.

TAKEOFF MINIMUMS  
Rwys 12L/C/R: Standard with a minimum climb of 250' per NM to 3100.  
Rwys 30L/C/R: Standard.



**DEPARTURE ROUTE DESCRIPTION**

TAKEOFF RUNWAYS 12L/C/R: Climb heading 124° or as assigned by ATC, thence. . . .

TAKEOFF RUNWAYS 30L/C/R: Climb heading 304° or as assigned by ATC, thence. . . .

. . . expect RADAR vectors to GBN VORTAC, then on track 249° to JUDTH, then on (transition).  
Maintain ATC assigned altitude, expect filed altitude 3 minutes after departure.

MOHAK TRANSITION (JUDTH7.MOHAK)

NOTE: Chart not to scale.

SW-4, 10 SEP 2020 to 08 OCT 2020