

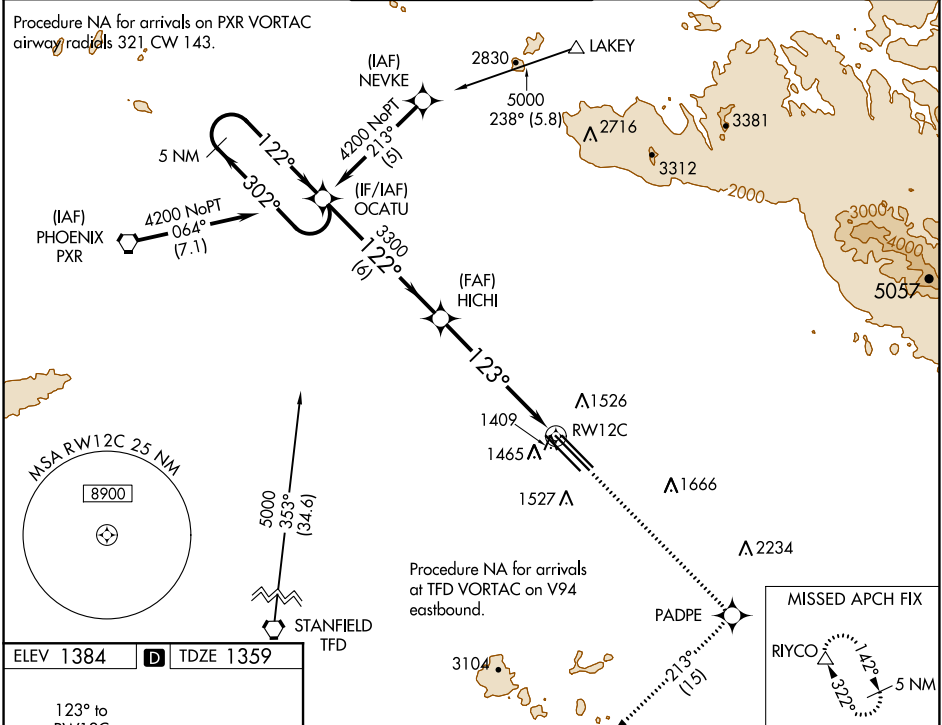
WAAS CH 58200 W12A	APP CRS 123°	Rwy Idg 10201 TDZE 1359 Apt Elev 1384
--	------------------------	--

RNAV (GPS) RWY 12C

PHOENIX-MESA GATEWAY (IWA)

⚠ DME/DME RNP-0.3 NA.
⚠ For uncompensated Baro-VNAV systems LNAV/VNAV NA below -17°C (2°F) or above 46°C (115°F).
 MISSED APPROACH: Climb to 5000 direct PADPE and on 213° track to RIYCO and hold.

ATIS ★ 133.5 270.275	PHOENIX APP CON 124.9 353.8	GATEWAY TOWER ★ 120.6 (CTAF) 289.4	GND CON 128.25 275.8	CLNC DEL 135.05
--------------------------------	---------------------------------------	--	--------------------------------	---------------------------



ELEV 1384	D	TDZE 1359
-----------	----------	-----------

123° to RW12C

MIRL Rwy 12R-30L
 HIRL Rwys 12L-30R and 12C-30C
 REIL Rwys 12L and 30R

PHOENIX, ARIZONA
 Amdt 1B 10NOV16

5 NM Holding Pattern	OCATU	5000	PADPE	213° tr	RIYCO
4200 ← 302°	→ 122°	122°	3300	123°	1.1 NM to RW12C
GP 3.00°	TCH 50	6 NM	4.8 NM	1.1	
CATEGORY	A	B	C	D	E
LPV DA	1609-1 250 (300-1)				
LNAV/VNAV DA	1686-1¼ 327 (400-1¼)				
LNAV MDA	1740-1 381 (400-1)		1740-1¼ 381 (400-1¼)		
CIRCLING	1840-1¼ 456 (500-1¼)	1840-1½ 456 (500-1½)	1940-2 558 (600-2)	2020-2¼ 636 (700-2¼)	

SW-4, 10 SEP 2020 to 08 OCT 2020

SW-4, 10 SEP 2020 to 08 OCT 2020