

WAAS CH 62911 W30A	APP CRS 303°	Rwy Idg 10201 TDZE 1380 Apt Elev 1382
--	------------------------	--

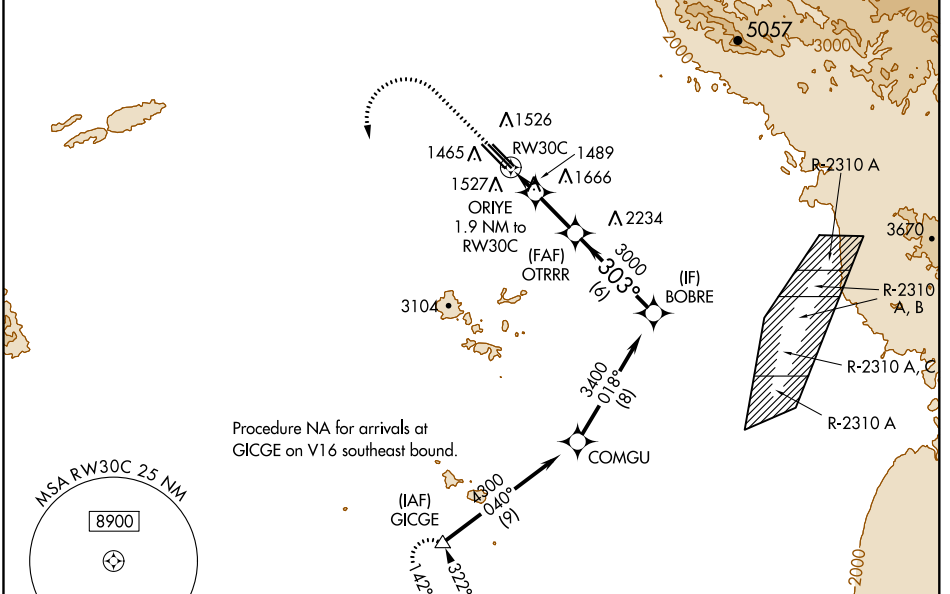
RNAV (GPS) Y RWY 30C

PHOENIX-MESA GATEWAY (IWA)

⚠ For uncompensated Baro-VNAV systems, LNAV/VNAV NA below -2°C (29°F) or above 35°C (95°F). DME/DME RNP-0.3 NA. When local altimeter setting not received, use Phoenix Sky Harbor Intl altimeter setting and increase all DA and MDA 80 feet, increase LPV all Cats visibility ½ mile and LNAV/VNAV all Cats, LNAV Cats C, D, and E, and Circling Cat E ¼ mile. VDP and Baro-VNAV NA with Phoenix Sky Harbor Intl altimeter setting.

MISSED APPROACH:
Climb to 2800 then climbing left turn to 5000 direct GICGE and hold.

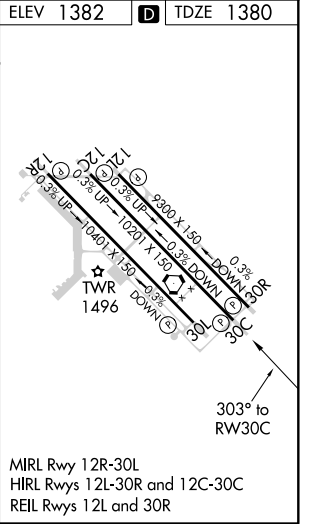
ATIS * 133.5 270.275	PHOENIX APP CON 124.9 353.8	GATEWAY TOWER * 120.6 (CTAF) 289.4	GND CON 128.25 275.8	CLNC DEL 135.05
--------------------------------	---------------------------------------	--	--------------------------------	---------------------------



SW-4, 10 SEP 2020 to 08 OCT 2020

SW-4, 10 SEP 2020 to 08 OCT 2020

ELEV 1382	TDZE 1380		
2800	5000	GICGE	VGSI and RNAV glidepath not coincident (VGSI Angle 3.00/TCH 49).
<p>*LNAV only. ORIYE 1.9 NM to RW30C</p> <p>*1.2 NM to RW30C</p> <p>OTRRR 3000</p> <p>BOBRE 3400</p> <p>303°</p> <p>3000</p> <p>GP 3.00° TCH 42</p>			
1.2 NM	0.7	3.1 NM	6 NM



CATEGORY	A	B	C	D	E
LPV DA		1580-¾	200 (200-¾)		
LNAV/VNAV DA		1630-7/8	250 (300-7/8)		
LNAV MDA	1800-1	420 (500-1)	1800-1½	420 (500-1½)	
CIRCLING	1880-1	498 (500-1)	1880-1½	1940-2	2040-2¼
			498 (500-1½)	558 (600-2)	658 (700-2¼)

MIRL Rwy 12R-30L
HIRL Rwys 12L-30R and 12C-30C
REIL Rwys 12L and 30R