

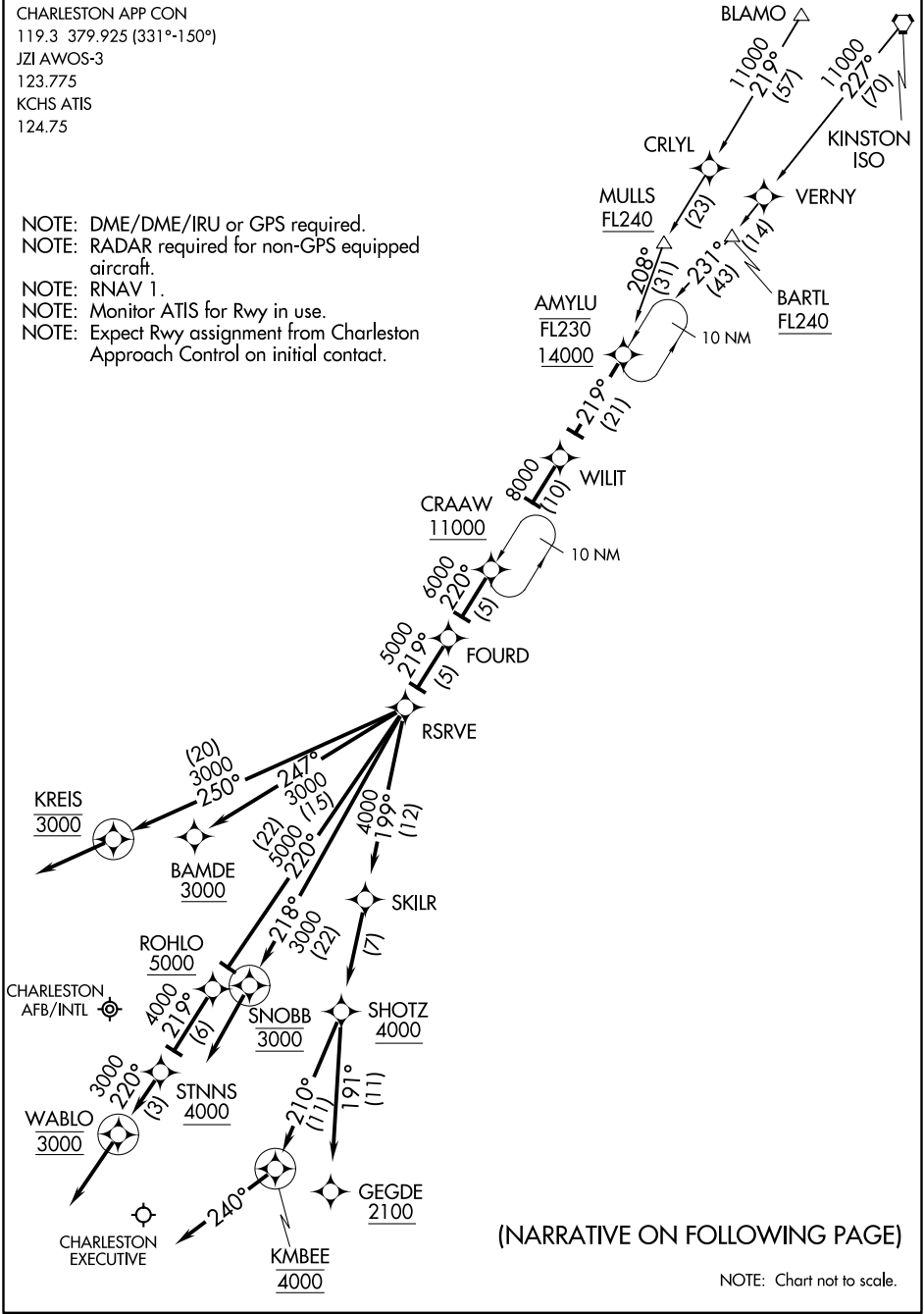
# AMYLU TWO ARRIVAL (RNAV)

AL-76 (FAA)

CHARLESTON, SOUTH CAROLINA

CHARLESTON APP CON  
 119.3 379.925 (331°-150°)  
 JZI AWOS-3  
 123.775  
 KCHS ATIS  
 124.75

- NOTE: DME/DME/IRU or GPS required.
- NOTE: RADAR required for non-GPS equipped aircraft.
- NOTE: RNAV 1.
- NOTE: Monitor ATIS for Rwy in use.
- NOTE: Expect Rwy assignment from Charleston Approach Control on initial contact.



(NARRATIVE ON FOLLOWING PAGE)

NOTE: Chart not to scale.

SE-2, 10 SEP 2020 to 08 OCT 2020

SE-2, 10 SEP 2020 to 08 OCT 2020