

# BAGGY TWO ARRIVAL (RNAV)

CHARLESTON, SOUTH CAROLINA

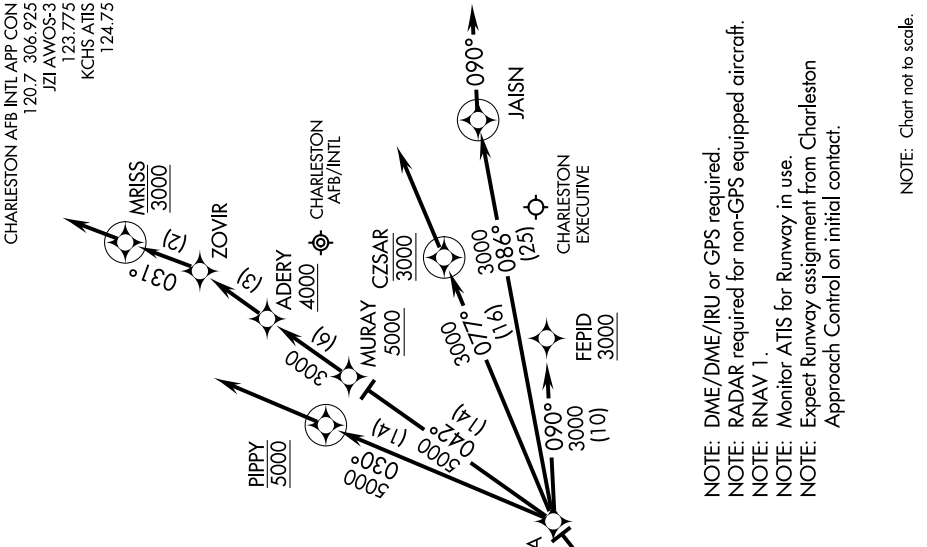
SE-2, 10 SEP 2020 to 08 OCT 2020

DEQUE TRANSITION (DEQUE.BAGGY2)  
SAVANNAH TRANSITION (SAV.BAGGY2)

From over BAGGY on track 059° to DDENA, then assigned runway transition.  
 LANDING CHARLESTON AFB/INTL:

Rwy 3: From over DDENA on track 090° to FEPID, cross FEPID at or above 3000. Expect RNAV (GPS) Rwy 3 approach.  
 Rwy 15: From over DDENA on track 030° to PIPPY, cross PIPPY at 5000, then on heading 030°. Expect RADAR vectors to final approach course.  
 Rwy 21: From over DDENA on track 042° to MURAY, cross MURAY at or above 5000, then on track 042° to ADERY at or above 4000, then on track 042° to ZOVIR, then on track 031° to MARISS, cross MARISS at 3000, then on heading 031°. Expect RADAR vectors to final approach course.  
 Rwy 33: From over DDENA on track 077° to CZSAR, cross CZSAR at 3000, then on heading 077°. Expect RADAR vectors to final approach course.  
 LANDING CHARLESTON EXECUTIVE:

Rwys 4 and 9: Expect RADAR vectors to final approach course prior to DDENA.  
 Rwy 27: From over DDENA on track 086° to JAISN, then on heading 090°. Expect RADAR vectors to final approach course.



- NOTE: DME/DME/IRU or GPS required.
- NOTE: RADAR required for non-GPS equipped aircraft.
- NOTE: RNAV 1.
- NOTE: Monitor ATIS for Runway in use.
- NOTE: Expect Runway assignment from Charleston Approach Control on initial contact.

NOTE: Chart not to scale.

SE-2, 10 SEP 2020 to 08 OCT 2020

# BAGGY TWO ARRIVAL (RNAV)

CHARLESTON, SOUTH CAROLINA