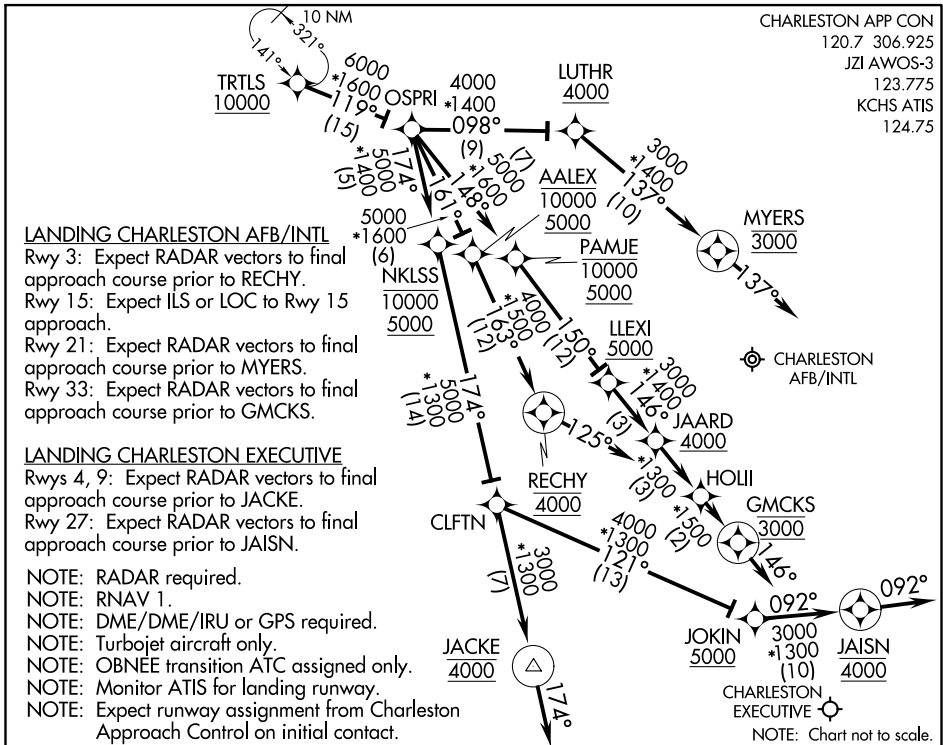


OSPRI SIX ARRIVAL (RNAV) Arrival Routes

CHARLESTON, SOUTH CAROLINA



ARRIVAL ROUTE DESCRIPTION

From TRTLS on track 119° to OSPRI.

LANDING CHARLESTON AFB/INTL

Rwy 3: From OSPRI on track 161° to cross AALEX between 5000 and 10000, then on track 163° to cross RECHY at 4000, then on heading 125°. Expect RADAR vectors to final approach course.

Rwy 15: From OSPRI on track 098° to cross LUTHR at/above 4000. Expect ILS or LOC to Rwy 15.

Rwy 21: From OSPRI on track 098° to cross LUTHR at/above 4000, then on track 137° to cross MYERS at 3000, then on heading 137°. Expect RADAR vectors to final approach course.

Rwy 33: From OSPRI on track 148° to cross PAMJE between 5000 and 10000, then on track 150° to cross LLEXI at/above 5000, then on track 146° to cross JAARD at/above 4000, then on track 146° to HOLLI, then on track 146° to cross GMCKS at 3000, then on heading 146°. Expect RADAR vectors to final approach course.

LANDING CHARLESTON EXECUTIVE

Rwys 4 and 9: From OSPRI on track 174° to cross NKLSS between 5000 and 10000, then on track 174° to CLFTN, then on track 174° to cross JACKE at 4000, then on heading 174°. Expect RADAR vectors to final approach course.

Rwy 27: From OSPRI on track 174° to cross NKLSS between 5000 and 10000, then on track 174° to CLFTN, then on track 121° to cross JOKIN at/above 5000, then on track 092° to cross JAISN at 4000, then on heading 092° or as assigned by ATC. Expect RADAR vectors to final approach course.

OSPRI SIX ARRIVAL (RNAV) Arrival Routes

CHARLESTON, SOUTH CAROLINA

SE-2, 10 SEP 2020 to 08 OCT 2020

SE-2, 10 SEP 2020 to 08 OCT 2020