

COLUMBUS, MISSISSIPPI

# HI-ILS or LOC Z RWY 31C

LOC I-TBB <b>108.7</b>	APCH CRS <b>315°</b>	Rwy Ldg TDZE Arprt Elev	31C <b>12,004</b> <b>213</b> <b>218</b>	31R <b>8001</b> <b>218</b> <b>218</b>
---------------------------	-------------------------	-------------------------------	--	--

JAL-91 [USAF]

COLUMBUS AFB (KCBM)

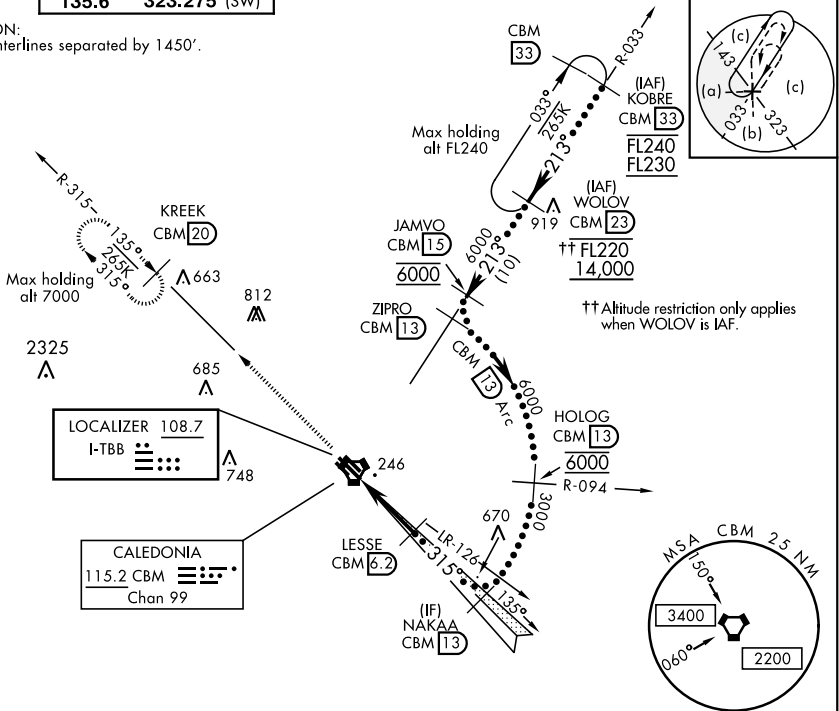
▼ \* When ALS inop, increase RVR to 40, vis to ¾ mile.  
 \*\* When ALS inop, increase RVR to 55, vis to 1 mile.



MISSED APPROACH: Climb heading 315° to intercept the VOR/TAC CBM R-315 outbound to KREEK (CBM R-315/20) and hold. Maintain 4000.

ATIS <b>115.2 273.5</b>	COLUMBUS APP CON <b>126.075 239.25</b> (N) <b>134.55 350.3</b> (SE) <b>135.6 323.275</b> (SW)	COLUMBUS TOWER <b>126.65 379.925</b>	GND CON <b>121.9 275.8</b>	CLNC DEL <b>269.55</b>
----------------------------	--	---	-------------------------------	---------------------------

\*\*\* CAUTION:  
Rwy centerlines separated by 1450'.

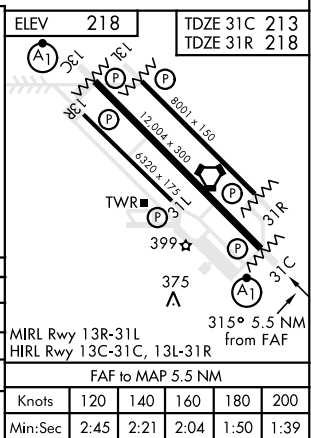


SC-4, 10 SEP 2020 to 08 OCT 2020

SC-4, 10 SEP 2020 to 08 OCT 2020

## EMERG SAFE ALT 100 NM 3700

4000	hdg 315°	CBM R-315	KREEK CBM 20	NAKAA 13
↑ LOC Only				
VORTAC	LOC MAP Z	↑ 1.7	LESSE 6.2	315°
		GS 3.00°	TCH 48	3000
		5.5 NM		2000
CATEGORY	C	D	E	
S-ILS 31C*	413/24	200 (200-½)		
S-LOC 31C**	580/35	367 (400-¾)		
SIDESTEP RWY 31R***	580/55	362 (400-1)		
CIRCLING	760-1½ 542 (600-1½)	780-2 562 (600-2)	1220-3 1002 (1100-3)	



COLUMBUS, MISSISSIPPI  
Amdt 1 13AUG20

33°39'N-88°27'W

COLUMBUS AFB (KCBM)

# HI-ILS or LOC Z RWY 31C