

COLUMBUS, MISSISSIPPI

# RNAV (GPS) RWY 13C

APCH CRS	Rwy Idg	12,004
135°	TDZE	196
	Arprt Elev	218

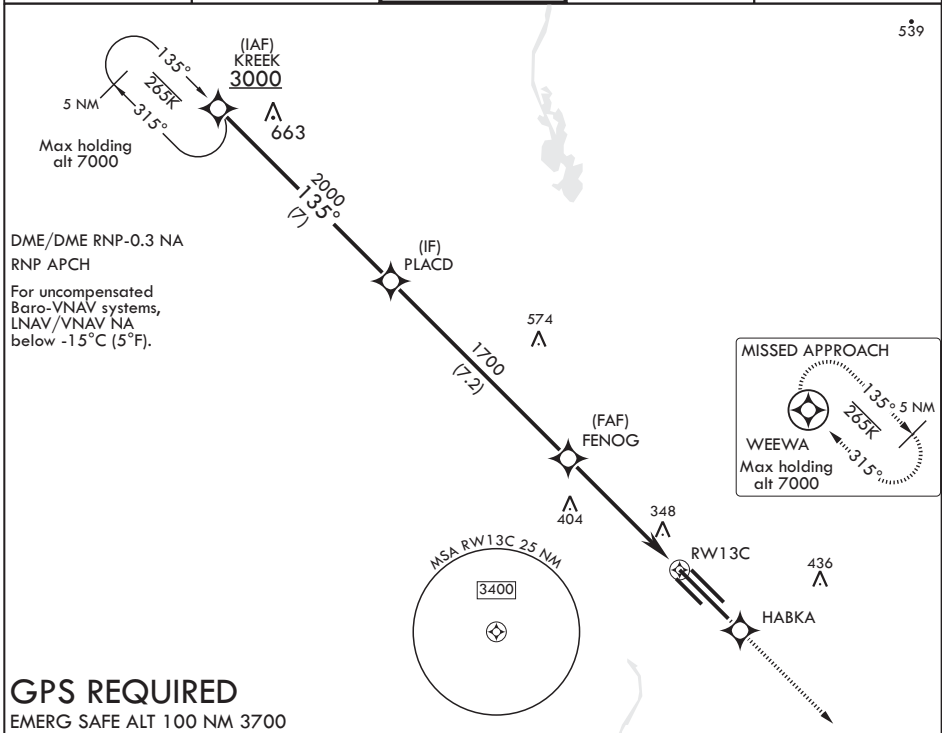
AL-91 (USAF)

COLUMBUS AFB (KCBM)

▼ \* When ALS inop, increase vis to 1 3/8 miles.  
 \*\* When ALS inop, increase CAT AB RVR to 55, vis to 1 mile, CAT CDE vis to 1 3/8 miles.

ALS-1	MISSED APPROACH: Climb to 4000 direct HABKA, direct track to WEEWA and hold as published.
-------	---

ATIS 115.2 273.5	APP CON 126.075 239.25 N 134.55 350.3 SE 135.6 323.275 SW	TOWER 126.65 379.925	GND CON 121.9 275.8	CLNC DEL 269.55
---------------------	--	-------------------------	------------------------	--------------------



## GPS REQUIRED

EMERG SAFE ALT 100 NM 3700

KREEK	3000	135°	PLACD	2000	FENOG	1700	4000	HABKA	tr 135°	WEEWA	ELEV 218	TDZE 196
											135° to RW13C	
											TWR BCN 399 MIRL Rwy 13R-31L HIRL Rws 13C-31C, 13L-31R	
CATEGORY	A	B	C	D	E							
LNAV/VNAV DA*	680/50		484	(500-1)								
LNAV MDA**	680/24 484 (500-1/2)		680/50	484	(500-1)							
CIRCLING	740-1	522 (600-1)	760-1 1/2 542 (600-1 1/2)	780-2 562 (600-2)	1240-3 1022 (1100-3)							

COLUMBUS, MISSISSIPPI

33°39'N - 88°27'W

COLUMBUS AFB (KCBM)

Amdt 1 27FEB20

# RNAV (GPS) RWY 13C

SC-4, 10 SEP 2020 to 08 OCT 2020

SC-4, 10 SEP 2020 to 08 OCT 2020