

# RNAV (GPS) RWY 31C

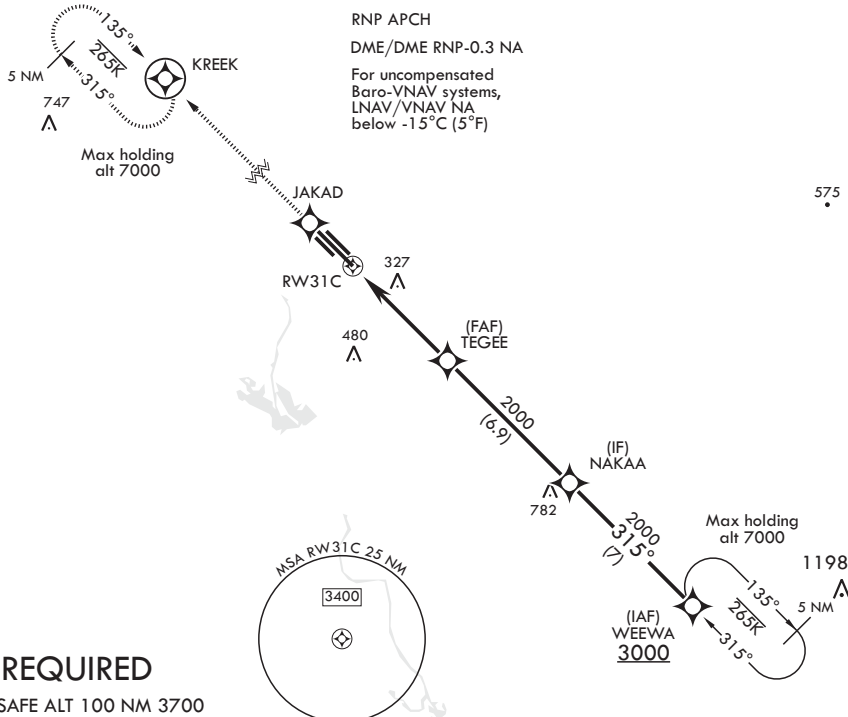
APCH CRS 315°	Rwy Idg 12,004
	TDZE 213
	Arprt Elev 218

AL-91 (USAF)

COLUMBUS AFB (KCBM)

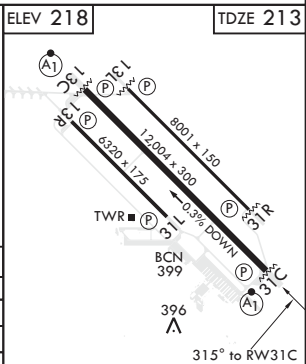
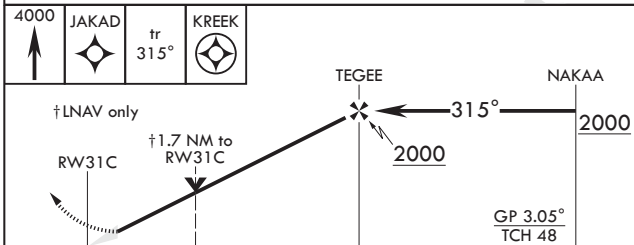
<p>▼ * When ALS inop, increase vis to 1 1/4 miles. ** When ALS inop, increase CAT AB RVR to 55, vis to 1 mile; CAT CDE vis to 1 3/4 miles.</p>	<p>ALSF-1</p> 	<p>MISSED APPROACH: Climb to 4000 direct JAKAD, direct KREEK and hold.</p>
--	---	--

<p>ATIS 115.2 273.5</p>	<p>APP CON 126.075 239.25 N 134.55 350.3 SE 135.6 323.275 SW</p>	<p>TOWER 126.65 379.925</p>	<p>GND CON 121.9 275.8</p>	<p>CLNC DEL 269.55</p>
-----------------------------	--	---------------------------------	--------------------------------	----------------------------



## GPS REQUIRED

EMERG SAFE ALT 100 NM 3700



CATEGORY	A	B	C	D	E
LNAV/VNAV DA*	640/40		427	(500-3/4)	
LNAV MDA**	800/24 587 (600-1/2)		800-1 1/4	587	(600-1 1/4)
<b>C</b> CIRCLING	800-1 582 (600-1)		800-1 3/4 582 (600-1 3/4)	800-2 582 (600-2)	1240-3 1022 (1100-3)

# RNAV (GPS) RWY 31C

SC-4, 10 SEP 2020 to 08 OCT 2020

SC-4, 10 SEP 2020 to 08 OCT 2020