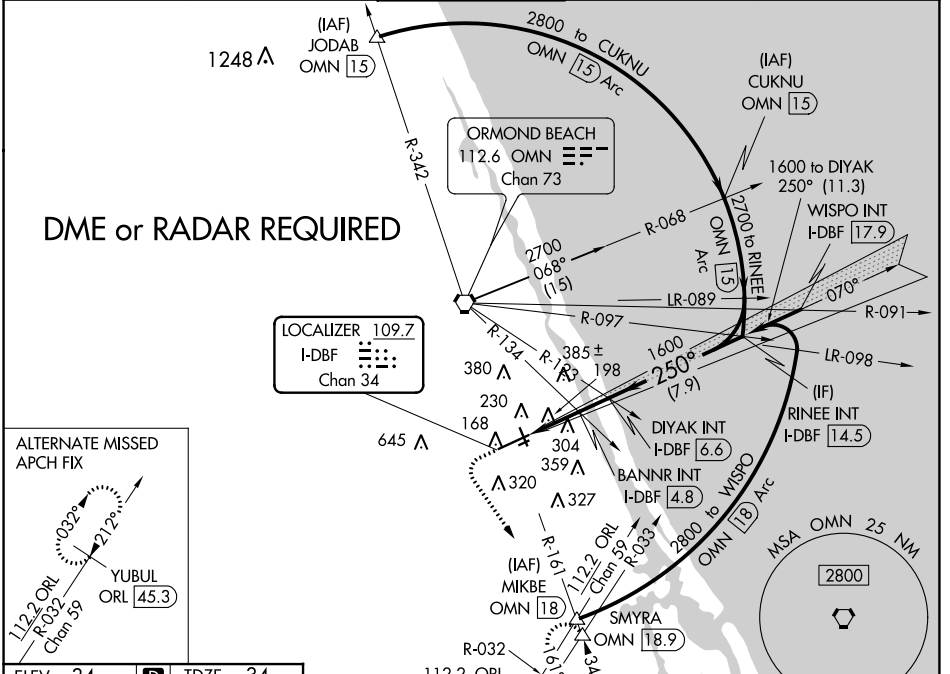


LOC/DME I-DBF	APP CRS	Rwy Idg	10293
109.7	250°	TDZE	34
Chan 34		Apt Elev	34

ILS or LOC RWY 25R

DAYTONA BEACH INTL (DAB)

 ASR	 MALS R	MISSED APPROACH: Climb to 500 then climbing left turn to 3000 on heading 150° and OMN VORTAC R-161 to SMYRA INT/OMN 18.9 DME and hold, continue climb-in-hold to 3000.		
		ATIS 132.875	DAYTONA APP CON 125.8 269.075	DAYTONA TOWER 120.7 257.8



ELEV 34	D	TDZE 34
---------	----------	---------

TDZ/CL Rwy 7L
HIRL Rwy 7L-25R
MIRL Rws 7R-25L and 16-34
REIL Rws 7R, 16, 25L and 34

FAF to MAP 4.8 NM

Knots	60	90	120	150	180
Min:Sec	4:48	3:12	2:24	1:55	1:36

TWR 149
3195 X 100
106 A, 600 A, 250 A, 151 A, 151 A, 151 A, 151 A, 151 A, 151 A, 151 A

500	3000	SMYRA	VGSi and ILS glidepath not coincident (VGSi Angle 3.00/TCH 72).		RINEE INT
hdg 150°	OMN R-161	DIYAK INT	I-DBF 6.6		OMN 14.5
*LOC only.	*I-DBF 2.9	BANNR INT	I-DBF 4.8	1600	2700
I-DBF 1.8		1040*		1600	GS 3.00° TCH 55
1.1 NM	1.9 NM	1.8 NM	7.9 NM		

CATEGORY	A	B	C	D
S-ILS 25R	234-½		200 (200-½)	
S-LOC 25R	1040-¾ 1006 (1100-¾)	1040-1 1006 (1100-1)	1040-2½	1006 (1100-2½)
C CIRCLING	1040-1¼ 1006 (1100-1¼)	1040-1½ 1006 (1100-1½)	1040-3	1006 (1100-3)
BANNR FIX MINIMUMS (DUAL VOR RECEIVERS or DME REQUIRED)				
S-LOC 25R	440-½	406 (500-½)	440-¾	406 (500-¾)
C CIRCLING	540-1	506 (600-1)	680-1¾ 646 (700-1¾)	700-2 666 (600-2)

SE-3, 10 SEP 2020 to 08 OCT 2020

SE-3, 10 SEP 2020 to 08 OCT 2020