

WAAS CH <b>45500</b> <b>W07A</b>	APP CRS <b>070°</b>	Rwy Idg TDZE Apt Elev	<b>9810</b> <b>30</b> <b>34</b>
--	------------------------	-----------------------------	---------------------------------------

# RNAV (GPS) RWY 7L

DAYTONA BEACH INTL (DAB)

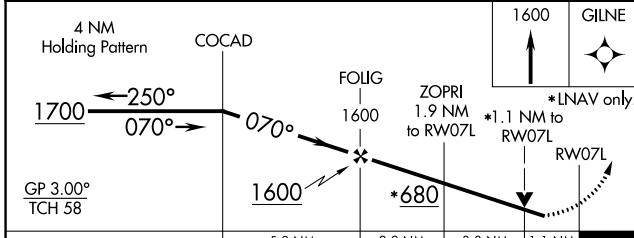
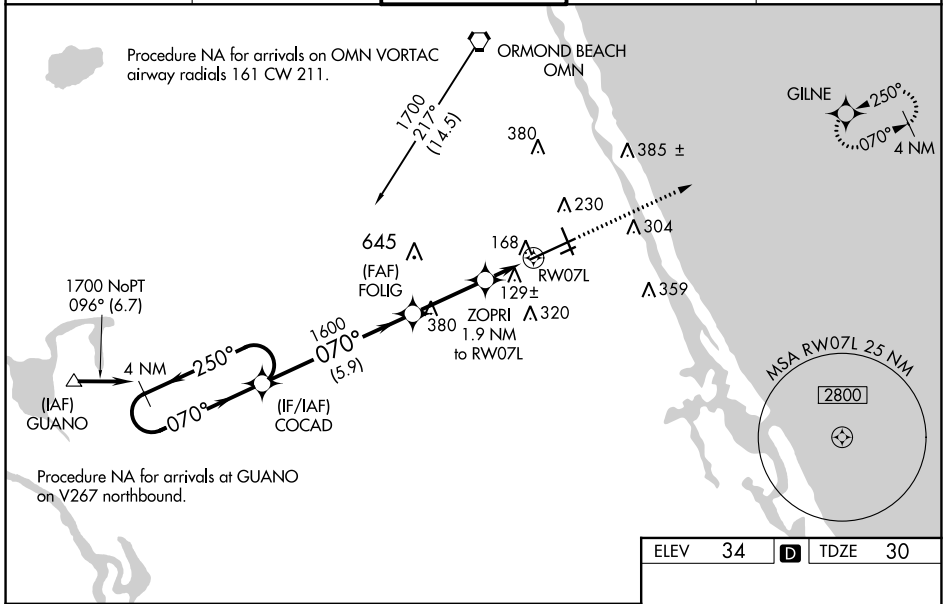
**ASR**

Inoperative table does not apply to LPV all Cats. For uncompensated Baro-VNAV systems, LNAV/VNAV NA below -15°C (5°F) or above 43°C (109°F). DME/DME RNP-0.3 NA. Helicopter visibility reduction below ¾ SM NA. For inoperative MALSR, increase LNAV/VNAV visibility all Cats to ¼ and increase LNAV Cats A/B visibility to RVR 5000 and Cats C/D visibility to RVR 6000.

**MALSR**  
AS

**MISSED APPROACH:**  
Climb to 1600 direct GILNE and hold.

ATIS <b>132.875</b>	DAYTONA APP CON <b>125.8 269.075</b>	<b>DAYTONA TOWER</b> <b>120.7 257.8</b>	GND CON <b>121.9 348.6</b>	CLNC DEL <b>119.3</b>
------------------------	---	--	-------------------------------	--------------------------



ELEV 34	<b>D</b>	TDZE 30
---------	----------	---------

10500 x 150

TWR 149

3195 x 100

34

152

150

106

91

85

070° to RW07L

TDZ/CL Rwy 7L  
HIRL Rwy 7L-25R  
REIL Rwy 7R, 16, 25L, and 34  
MIRL Rwy 7R-25L and 16-34

SE-3, 10 SEP 2020 to 08 OCT 2020

SE-3, 10 SEP 2020 to 08 OCT 2020