

(ROYES7.ROYES) 20086

# ROYES SEVEN DEPARTURE

AL-110

DAYTONA BEACH INTL (DAB)  
DAYTONA BEACH, FLORIDA

ATIS  
132.875  
CLNC DEL  
119.3  
GND CON  
121.9 348.6  
DAYTONA TOWER  
120.7 257.8  
DAYTONA DEP CON  
127.075 351.95

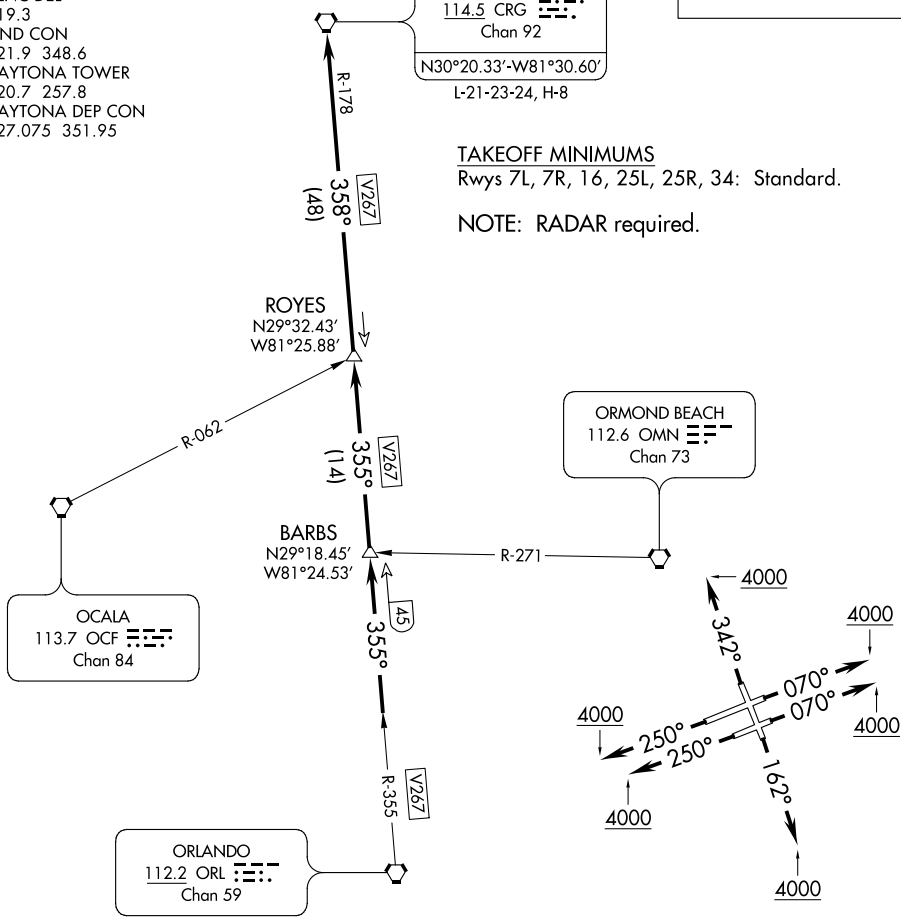
**TOP ALTITUDE:  
4000**

CRAIG  
114.5 CRG  
Chan 92  
N30°20.33'-W81°30.60'  
L-21-23-24, H-8

### TAKEOFF MINIMUMS

Rwys 7L, 7R, 16, 25L, 25R, 34: Standard.

NOTE: RADAR required.



NOTE: Chart not to scale.

### DEPARTURE ROUTE DESCRIPTION

- TAKEOFF RUNWAY 7L: Climb heading 070° to 4000 or as assigned by ATC, thence . . .
- TAKEOFF RUNWAY 7R: Climb heading 070° to 4000 or as assigned by ATC, thence . . .
- TAKEOFF RUNWAY 16: Climb heading 162° to 4000 or as assigned by ATC, thence . . .
- TAKEOFF RUNWAY 25L: Climb heading 250° to 4000 or as assigned by ATC, thence . . .
- TAKEOFF RUNWAY 25R: Climb heading 250° to 4000 or as assigned by ATC, thence . . .
- TAKEOFF RUNWAY 34: Climb heading 342° to 4000 or as assigned by ATC, thence . . .

. . . Expect vectors to intercept CRG R-178 to CRG VORTAC, then via assigned route.  
Expect clearance to filed altitude/flight level ten (10) minutes after departure.

# ROYES SEVEN DEPARTURE

(ROYES7.ROYES) 25JUN15

DAYTONA BEACH, FLORIDA  
DAYTONA BEACH INTL (DAB)

SE-3, 10 SEP 2020 to 08 OCT 2020

SE-3, 10 SEP 2020 to 08 OCT 2020