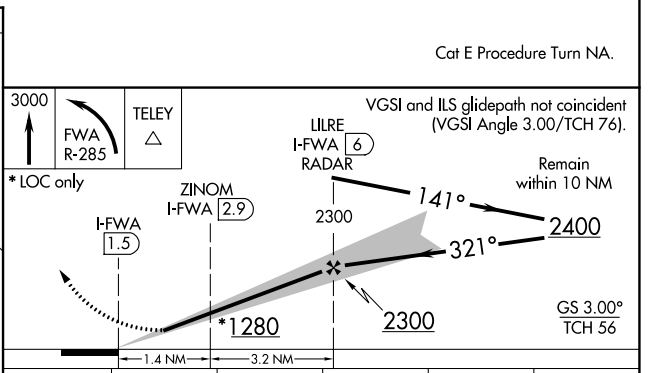
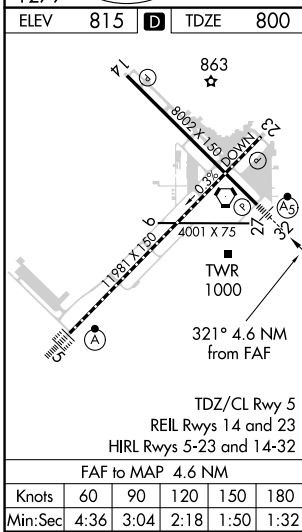
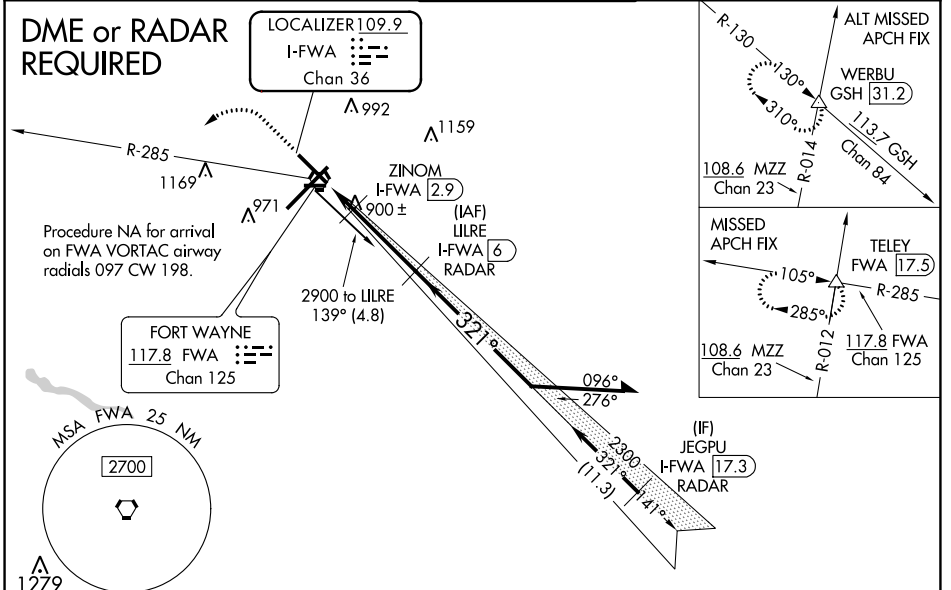


LOC/DME I-FWA <b>109.9</b> Chan 36	APP CRS <b>321°</b>	Rwy Idg TDZE Apt Elev	<b>8001</b> <b>800</b> <b>815</b>
------------------------------------------	------------------------	-----------------------------	-----------------------------------------

# ILS or LOC RWY 32

FORT WAYNE INTL (FWA)

DME required for LOC only. DME or RADAR required for procedure entry.		MALSR 	MISSED APPROACH: Climb to 3000 then left turn on FWA VORTAC R-285 to TELEY INT/FWA 17.5 DME and hold.	
 ASR	For inop ALS, increase S-ILS 32 Cat E visibility to RVR 4000, S-LOC 32 Cat E visibility to RVR 6000. Use I-FWA DME when on the localizer course. # RVR 1800 authorized with use of FD or AP or HUD to DA.			
ATIS <b>121.25 360.825</b>	FORT WAYNE APP CON <b>127.2 284.6</b>	FORT WAYNE TOWER <b>119.1 269.325</b>	GND CON <b>121.9 348.6</b>	CLNC DEL <b>124.75</b>



CATEGORY	A	B	C	D	E
S-ILS 32	# 1000/24 200 (200-½)				
S-LOC 32	1160/24	360 (400-½)	1160/40 360 (400-¾)		
CIRCLING	1300-1	485 (500-1)	1420-1¾ 605 (700-1¾)	1520-2¼ 705 (800-2¼)	1520-2½ 705 (800-2½)

EC-2, 10 SEP 2020 to 08 OCT 2020

EC-2, 10 SEP 2020 to 08 OCT 2020