

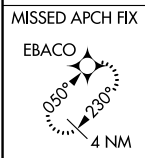
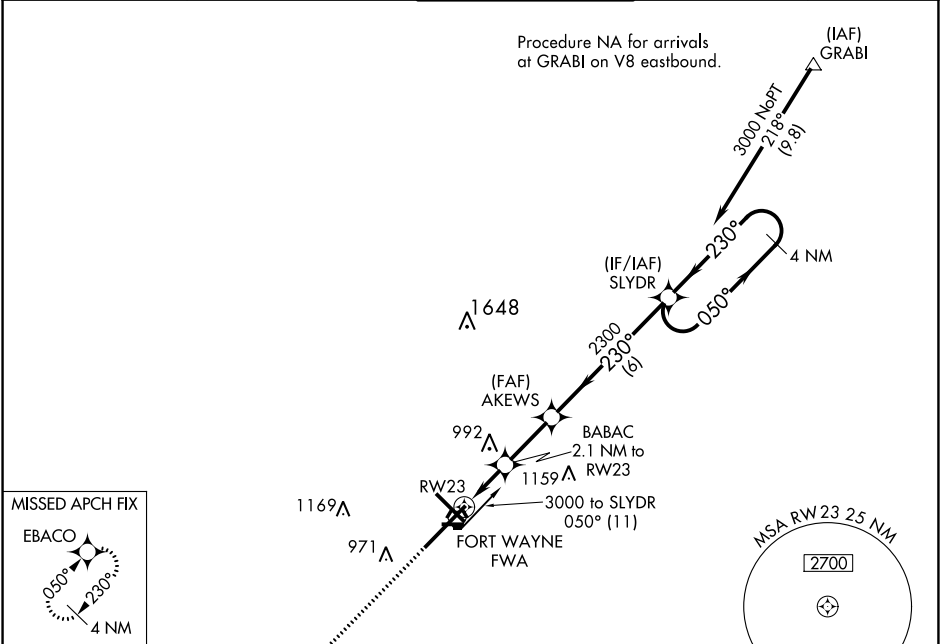
WAAS CH 69599 W23A	APP CRS 230°	Rwy Idg 11981 TDZE 799 Apt Elev 815
----------------------------------------	------------------------	----------------------------------------------------------------

RNAV (GPS) RWY 23

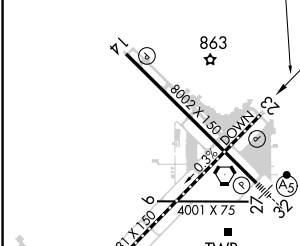
FORT WAYNE INTL (FWA)

<p>For uncompensated Baro-VNAV systems, LNAV/VNAV NA below -16°C (4°F) or above 47°C (116°F). DME/DME RNP-0.3 NA.</p>	<p>MISSED APPROACH: Climb to 3000 direct EBACO and hold.</p>			
	<p>ASR</p>			

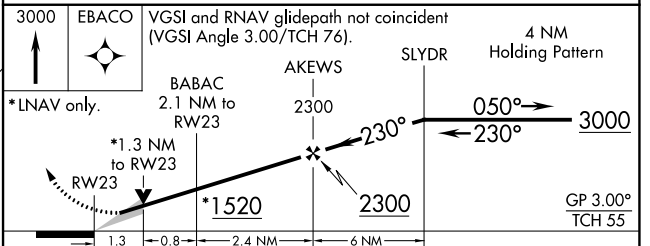
ATIS 121.25 360.825	FORT WAYNE APP CON 127.2 284.6	FORT WAYNE TOWER 119.1 269.325	GND CON 121.9 348.6	CLNC DEL 124.75
-------------------------------	------------------------------------------	------------------------------------------	-------------------------------	---------------------------



ELEV 815	D	TDZE 799
-----------------	----------	-----------------



Procedure NA for arrival on FWA VORTAC airway radials 335 CW 134.



CATEGORY	A	B	C	D	E
LPV DA		1053/40	254 (300-¾)		
LNAV/VNAV DA		1230-1⅜	431 (500-1⅝)		
LNAV MDA	1300/55	501 (500-1)	1300-1⅜	501 (500-1⅝)	
C CIRCLING	1300-1	485 (500-1)	1420-1¾ 605 (700-1¾)	1520-2¼ 705 (800-2¼)	1520-2½ 705 (800-2½)

TDZ/CL Rwy 5
REIL Rwy 14 and 23
HIRL Rwy 5-23 and 14-32

EC-2, 10 SEP 2020 to 08 OCT 2020

EC-2, 10 SEP 2020 to 08 OCT 2020