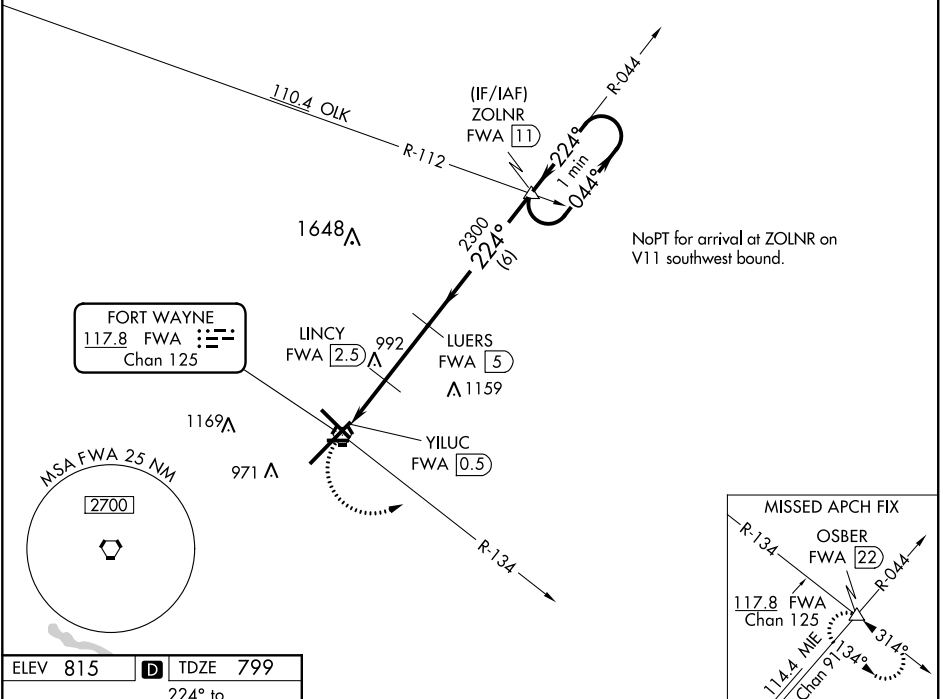


VORTAC FWA 117.8 Chan 125	APP CRS 224°	Rwy Idg TDZE Apt Elev	11981 799 815
--	------------------------	-----------------------------	--

VOR or TACAN RWY 23

FORT WAYNE INTL (FWA)

 ASR		MISSED APPROACH: Climbing left turn to 3000 on FWA VORTAC R-134 to OSBER INTL/FWA 22 DME and hold.		
ATIS 121.25 360.825	FORT WAYNE APP CON 127.2 284.6	FORT WAYNE TOWER 119.1 269.325	GND CON 121.9 348.6	CLNC DEL 124.75



EC-2, 10 SEP 2020 to 08 OCT 2020

EC-2, 10 SEP 2020 to 08 OCT 2020

ELEV 815	D	TDZE 799
224° to FWA VORTAC 		
FAF to MAP 4.5 NM Knots: 60 90 120 150 180 Min:Sec: 4:30 3:00 2:15 1:48 1:30		

3000 FWA R-134 OSBER FWA 22 LINCYN FWA 2.5 LUERS FWA 5 ZOLNLR FWA 11 YILUC FWA 0.5 FWA 1.8 3.04° TCH 55 1400 2300 224° 044° 3000 224° VGSi and descent angles not coincident (VGSi Angle 3.00/TCH 76).	CATEGORY S-23 C S-23 C	A 1400/55 1400-1 1300/55 1300-1	B 601 (600-1) 585 (600-1) 501 (500-1) 485 (500-1)	C 1400-1¾ 605 (700-1¾) 1420-1¾ 605 (700-1¾)	D 601 (600-1¾) 705 (800-2¼) 1520-2¼ 705 (800-2¼)	E 1520-2½ 705 (800-2½) 1520-2½ 705 (800-2½)
---	------------------------------------	---	---	---	--	---