

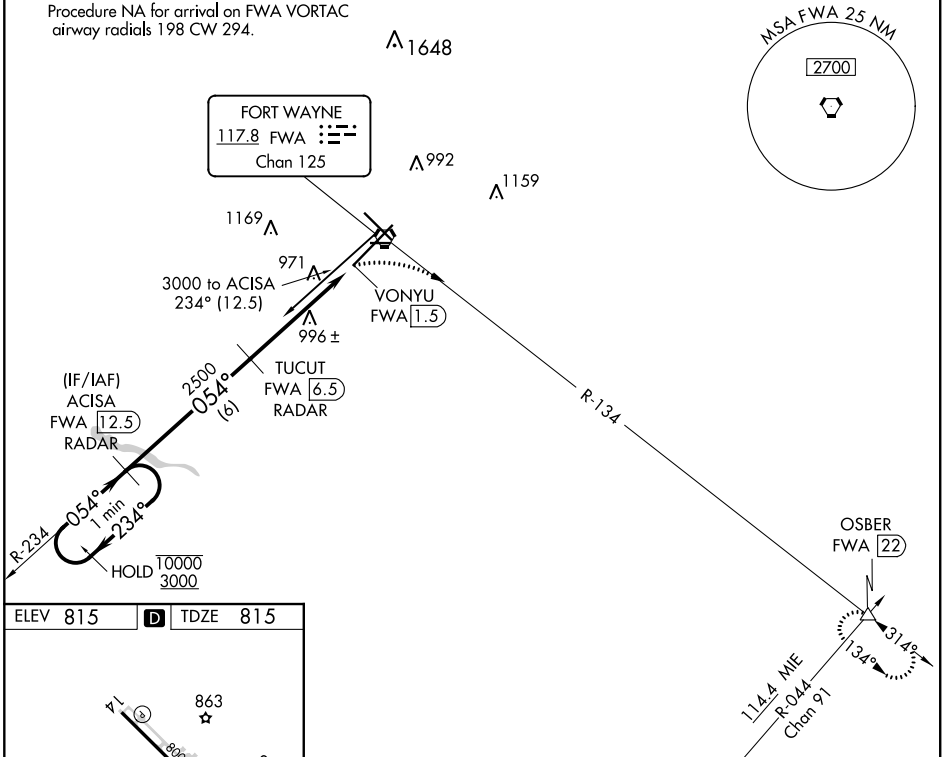
VORTAC FWA <b>117.8</b> Chan <b>125</b>	APP CRS <b>054°</b>	Rwy Idg <b>11981</b> TDZE <b>815</b> Apt Elev <b>815</b>
---	------------------------	--

# VOR or TACAN RWY 5

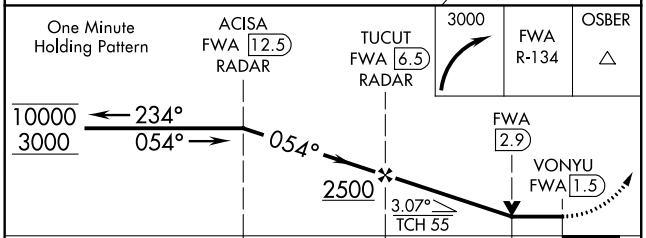
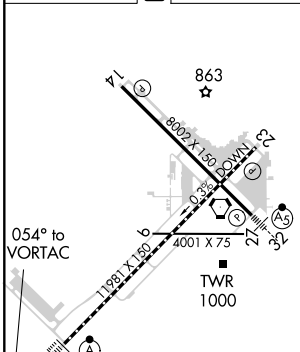
FORT WAYNE INTL (F'WA)

DME or RADAR required.		ALSF-2 	MISSED APPROACH: Climbing right turn to 3000 on FWA VORTAC R-134 to OSBER INT/FWA 22 DME and hold.	
ATIS <b>121.25 360.825</b>	FORT WAYNE APP CON <b>127.2 284.6</b>	FORT WAYNE TOWER <b>119.1 269.325</b>	GND CON <b>121.9 348.6</b>	CLNC DEL <b>124.75</b>

Procedure NA for arrival on FWA VORTAC airway radials 198 CW 294.



ELEV 815	<b>D</b>	TDZE 815
----------	----------	----------



CATEGORY	A	B	C	D	E
S-5	1320/24	505 (600-1/2)	1320/55	505 (600-1)	1320/60 505 (600-1 1/4)
<b>C</b> CIRCLING	1320-1	505 (600-1)	1360-1 1/2 545 (600-1 1/2)	1520-2 1/4 705 (800-2 1/4)	1520-2 1/2 705 (800-2 1/2)

EC-2, 10 SEP 2020 to 08 OCT 2020

EC-2, 10 SEP 2020 to 08 OCT 2020