

LOC/DME I-SXH 108.95 Chan 26(Y)	APP CRS 093°	Rwy Idg TDZE Apt Elev	10540 669 680
--	------------------------	-----------------------------	--

ILS RWY 10C (CAT II & III)

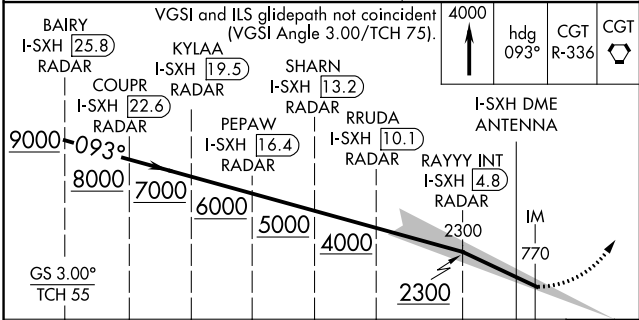
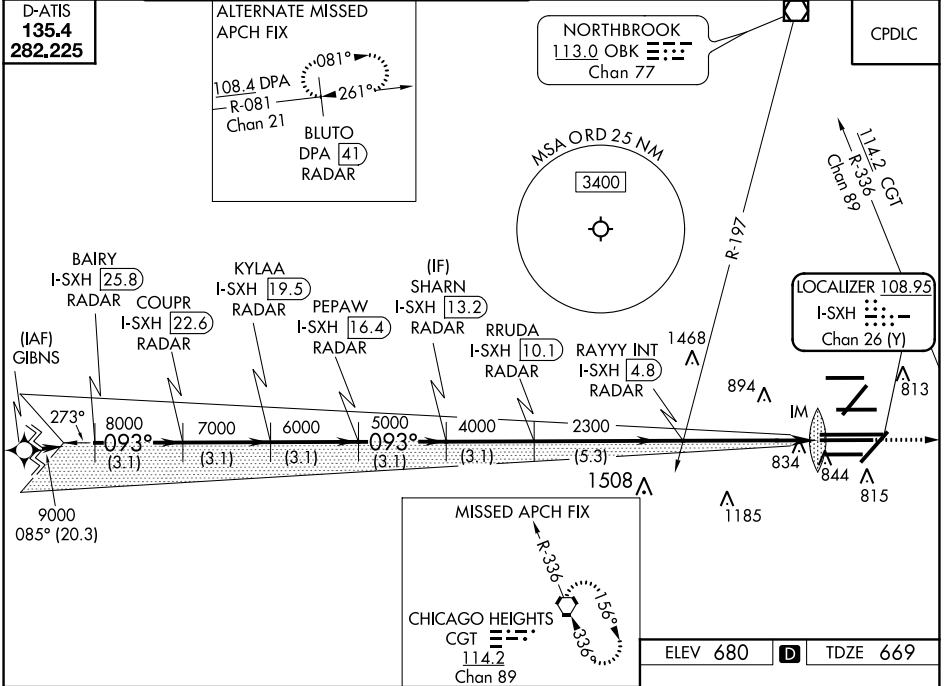
CHICAGO O'HARE INTL (ORD)

From GIBNS: RNAV-1 GPS required.
 RNAV 1-GPS or RADAR required for procedure entry. DME or RADAR required.
 Simultaneous approach authorized. CAT II: RVR 1000 authorized with specific OPSPEC, MSPEC, or LOA approval and use of autoland or HUD to touchdown.

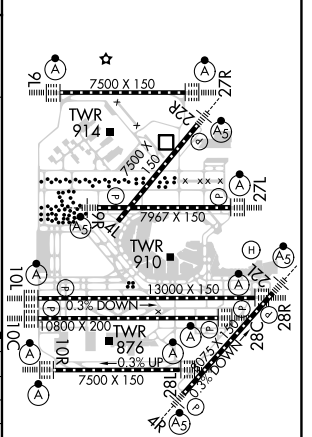


MISSED APPROACH: Climb to 4000 on heading 093° and CGT VORTAC R-336 to CGT VORTAC and hold.

CHICAGO APP CON 119.0 292.125	O'HARE TOWERS 128.15 348.0 (Rwy 9L/27R) 133.0 348.0 (10R/28L) 120.75 121.15 126.9 132.7 348.0 (CENTER)	GND CON (TWR CENTER) 124.125 (TWR NORTH) 118.05 (TWR SOUTH) 226.675 (ALL TWRs)	(TWR CENTER) (OBND) 121.75 121.9 (IBND)	CLNC DEL 121.6
---	--	--	---	--------------------------



ELEV 680	D	TDZE 669
----------	---	----------



CATEGORY	A	B	C	D
S-ILS 10C	CAT II RA 102/12 100 DA 769			
S-ILS 10C	CAT III RVR 06			

CATEGORY II and III ILS - SPECIAL AIRCREW & AIRCRAFT CERTIFICATION REQUIRED

EC-3, 10 SEP 2020 to 08 OCT 2020

EC-3, 10 SEP 2020 to 08 OCT 2020