

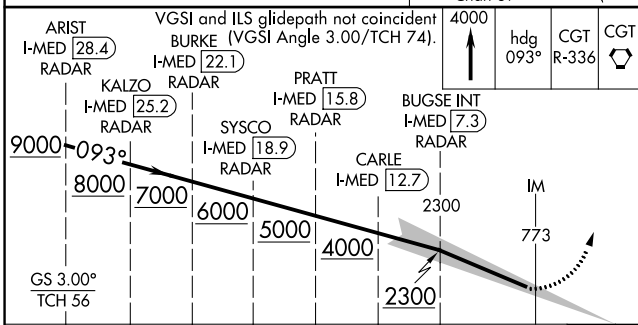
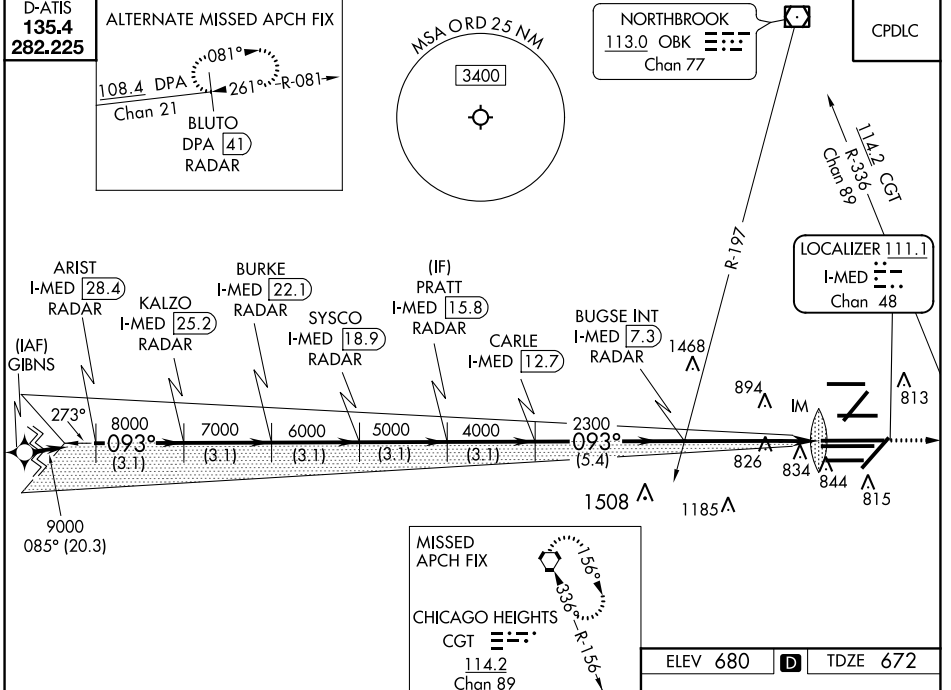
|   |                        |  |
|---|------------------------|--|
| LOC/DME I-MED<br><b>111.1</b><br>Chan <b>48</b> | APP CRS<br><b>093°</b> | Rwy Idg <b>12246</b><br>TDZE <b>672</b><br>Apt Elev <b>680</b> |
|---|------------------------|--|

# ILS RWY 10L (CAT II & III)

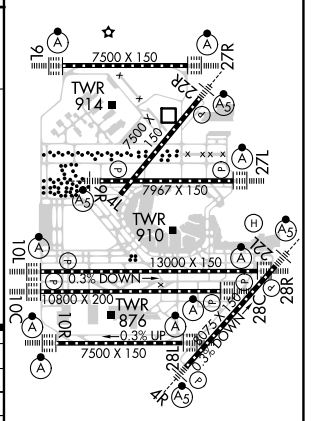
## CHICAGO O'HARE INTL (ORD)

From GIBNS: RNAV-1 GPS required.  
 RNAV 1-GPS or RADAR required for procedure entry. DME or RADAR required.  
 Simultaneous approach authorized.

|   |  |   |   |                          |
|---|--|---|---|--------------------------|
| CHICAGO APP CON<br><b>119.0 292.125</b> | O'HARE TOWERS<br><b>128.15 348.0</b> (Rwy 9L/27R)<br><b>133.0 348.0</b> (10R/28L)<br><b>126.9 132.7 348.0</b> (CENTER) | GND CON (TWR NORTH)<br><b>124.125</b><br>(TWR SOUTH)<br><b>118.05</b><br>(ALL TWRs)<br><b>226.675</b> | (TWR CENTER)<br><b>121.75</b> (OBND)<br><b>121.9</b> (IBND) | CLNC DEL<br><b>121.6</b> |
|---|--|---|---|--------------------------|



|          |          |          |
|----------|----------|----------|
| ELEV 680 | <b>D</b> | TDZE 672 |
|----------|----------|----------|



|           |                            |   |   |   |
|-----------|----------------------------|---|---|---|
| CATEGORY  | A                          | B | C | D |
| S-ILS 10L | CAT II RA 95/12 100 DA 772 |   |   |   |
| S-ILS 10L | CAT III RVR 06             |   |   |   |

**CATEGORY II and III ILS - SPECIAL AIRCREW & AIRCRAFT CERTIFICATION REQUIRED**

HIRL all Rwys  
 TDZ/CL all Rwys except 4L

EC-3, 10 SEP 2020 to 08 OCT 2020

EC-3, 10 SEP 2020 to 08 OCT 2020