

LOC/DME I-IAC 110.5 Chan 42	APP CRS 273°	Rwy ldg 7782 TDZE 654 Apt Elev 680
---	------------------------	--

ILS RWY 27L (CAT II & III)

CHICAGO O'HARE INTL (ORD)

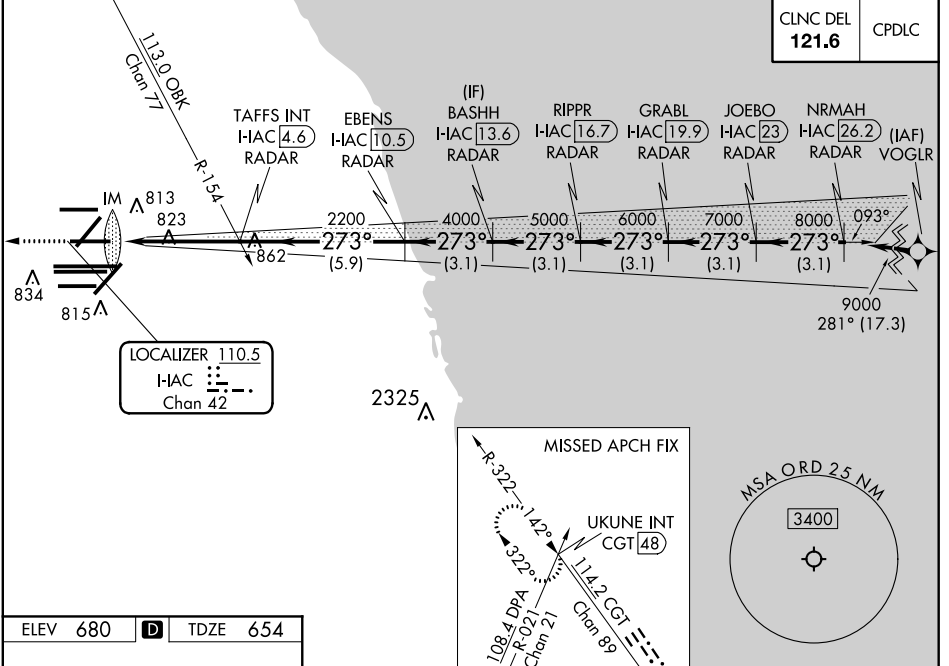
From VOGLR: RNAV 1-GPS required.
 Aircraft not GPS equipped - RADAR required for procedure entry.
 DME or RADAR required.

Simultaneous approach authorized.

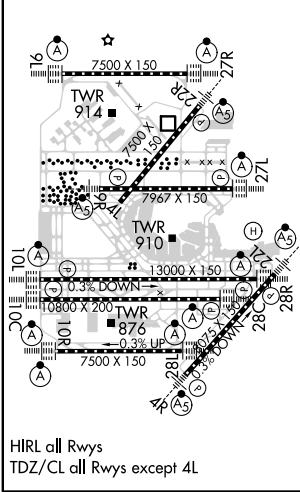
ALSF-2

MISSED APPROACH: Climb to 1200 then climbing right turn to 4000 on heading 295° and on CGT VORTAC R-322 to UKUNE INT/CGT 48 DME and hold.

D-ATIS 135.4 282.225	CHICAGO APP CON 119.0 292.125	O'HARE TOWERS 128.15 348.0 (Rwy 9L/27R) 133.0 348.0 (10R/28L) 120.75 121.15 126.9 132.7 348.0 (CENTER)	GND CON (TWR NORTH) 124.125 (TWR SOUTH) 118.05 (ALL TWR) 226.675	(TWR CENTER) 121.75 (OBND) (IBND) 121.9
--	---	--	--	--



ELEV 680	D	TDZE 654
-----------------	----------	-----------------



1200	4000	CGT R-322	UKUNE INT	VGSJ and ILS glidepath not coincident (VGSJ Angle 3.00/TCH 67).			
↑	hdg 295°			BASHH I-HAC 13.6	GRABL I-HAC 19.9	JOEBO I-HAC 23	NRMAH I-HAC 26.2
		TAFSS INT I-HAC 4.6	EBENS I-HAC 10.5	RIPPR I-HAC 16.7			
		I-HAC DME ANTENNA					
		IM 750	2200	4000	5000	6000	7000
		1040'	4.7 NM	5.9 NM	3.1 NM	3.1 NM	3.1 NM
CATEGORY	A	B		C		D	
S-ILS 27L	CAT II RA 110/12			100 DA 754			
S-ILS 27L	CAT III RVR 06						

CATEGORY II & III ILS - SPECIAL AIRCREW & AIRCRAFT CERTIFICATION REQUIRED

EC-3, 10 SEP 2020 to 08 OCT 2020

EC-3, 10 SEP 2020 to 08 OCT 2020