

| | | |
|---|------------------------|--|
| LOC/DME I-VZE 108.95 Chan 26 (Y) | APP CRS 273° | Rwy ldg 10800 TDZE 651 Apt Elev 680 |
|---|------------------------|--|

ILS RWY 28C (SA CAT I)

CHICAGO O'HARE INTL (ORD)

From VOGLR: RNAV 1-GPS required.
Aircraft not GPS equipped - RADAR required for procedure entry.
DME or RADAR required.

Simultaneous approach authorized. Requires specific OPSPEC, MSPEC, or LOA approval and use of HUD to DH.

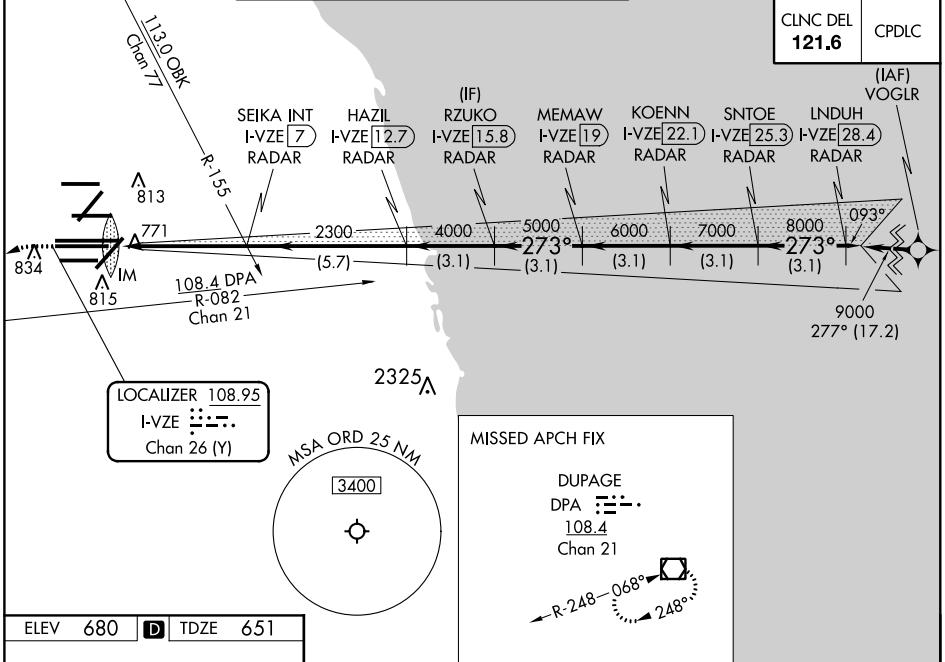
ALSF-2



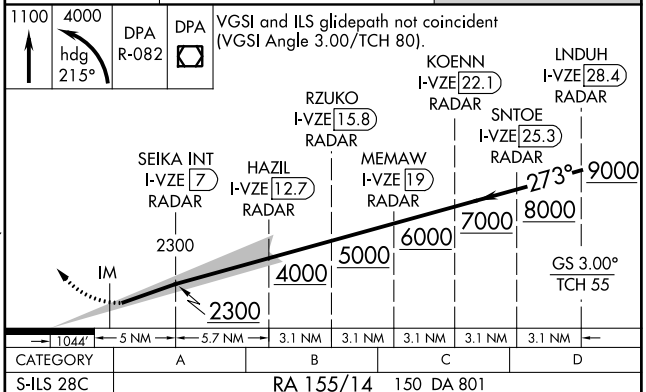
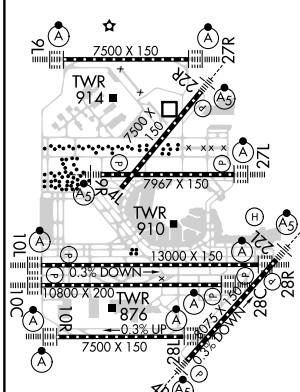
MISSED APPROACH: Climb to 1100 then climbing left turn to 4000 on heading 215° and DPA VOR/DME R-082 to DPA VOR/DME and hold.

| | | | |
|--|---|--|---|
| D-ATIS 135.4 282.225 | CHICAGO APP CON 119.0 292.125 | O'HARE TOWERS 128.15 348.0 (Rwy 9L/27R) 133.0 348.0 (10R/28L) 120.75 121.15 126.9 132.7 348.0 (CENTER) | GND CON (TWR CENTER) 124.125 (TWR NORTH) 121.75 (OBND) 118.05 (TWR SOUTH) 121.9 (IBND) 226.675 (ALL TWRS) |
|--|---|--|---|

| | |
|--------------------------|-------|
| CNLC DEL 121.6 | CPDLC |
|--------------------------|-------|



| | | |
|-----------------|----------|-----------------|
| ELEV 680 | D | TDZE 651 |
|-----------------|----------|-----------------|



HIRL all Rwys
TDZ/CL all Rwys except 4L

SA CATEGORY I ILS - SPECIAL AIRCREW & AIRCRAFT CERTIFICATION REQUIRED

EC-3, 10 SEP 2020 to 08 OCT 2020

EC-3, 10 SEP 2020 to 08 OCT 2020