

LOC/DME I-MED 111.1 Chan 48	APP CRS 093°	Rwy ldg 12246 TDZE 672 Apt Elev 680
---	------------------------	--

ILS or LOC RWY 10L

CHICAGO O'HARE INTL (ORD)

From GIBNS: RNAV-1 GPS required.
 RNAV 1-GPS or RADAR required for procedure entry. DME or RADAR required.
 Simultaneous approach authorized.

ALSF-2
 MISSED APPROACH: Climb to 4000 on heading 093° and CGT VORTAC R-336 to CGT VORTAC and hold.

CHICAGO APP CON 119.0 292.125	O'HARE TOWERS 128.15 348.0 (Rwy 9L/27R) 133.0 348.0 (10R/28L) 126.9 348.0 (CENTER)	GND CON (TWR CENTER) 124.125 (TWR NORTH) 118.05 (TWR SOUTH) 226.675 (ALL TWRs)	(TWR CENTER) 121.75 (OBND) 121.9 (IBND)	CLNC DEL 121.6
---	--	--	---	--------------------------

D-ATIS **135.4**
282.225

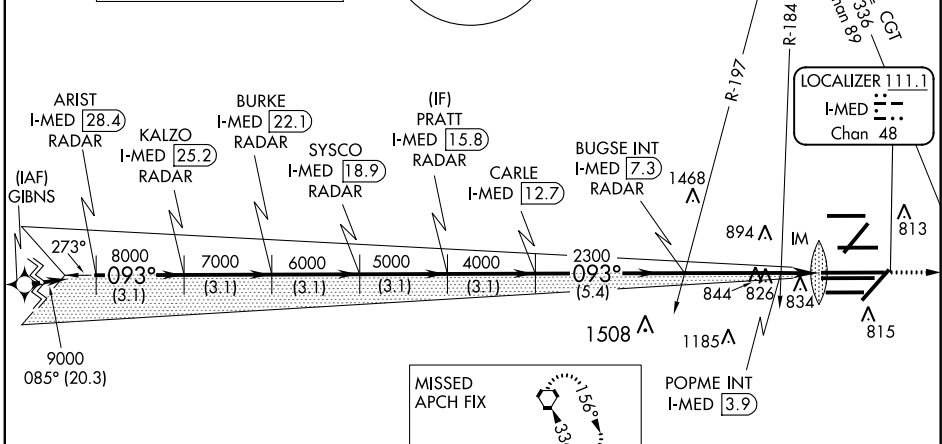
ALTERNATE MISSED APCH FIX

108.4 DPA
261° -R-081
Chan 21
BLUTO DPA 41
RADAR

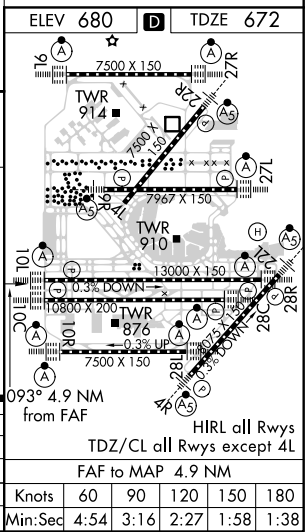
MSA ORD 2.5 NM
3400

NORTHBROOK
113.0 OBK
Chan 77

CPDLC



ARIST I-MED [28.4] RADAR	BURKE I-MED [22.1] RADAR	PRATT I-MED [15.8] RADAR	BUGSE INT I-MED [7.3]	POPME INT I-MED [3.9]	CGT R-336
KALZO I-MED [25.2] RADAR	SYSCO I-MED [18.9] RADAR	CARLE I-MED [12.7] RADAR	CGT R-336	*LOC only.	
9000 8000 7000 6000 5000 4000 2300	093°	2300	1200	I-MED [2.4]	
3.1 NM	3.1 NM	3.1 NM	3.1 NM	3.1 NM	5.4 NM
CATEGORY A			CATEGORY B		CATEGORY C
S-ILS 10L			872/18		200 (200-½)
S-LOC 10L			1200/24 528 (600-½)		1200/55 528 (600-1)
POPME FIX MINIMUMS (DUAL VOR RECEIVERS OR DME REQUIRED)					
S-LOC 10L			1080/24 408 (400-½)		1080/40 408 (400-¾)



EC-3, 10 SEP 2020 to 08 OCT 2020

EC-3, 10 SEP 2020 to 08 OCT 2020