

# ILS or LOC RWY 22L

CHICAGO O'HARE INTL (ORD)

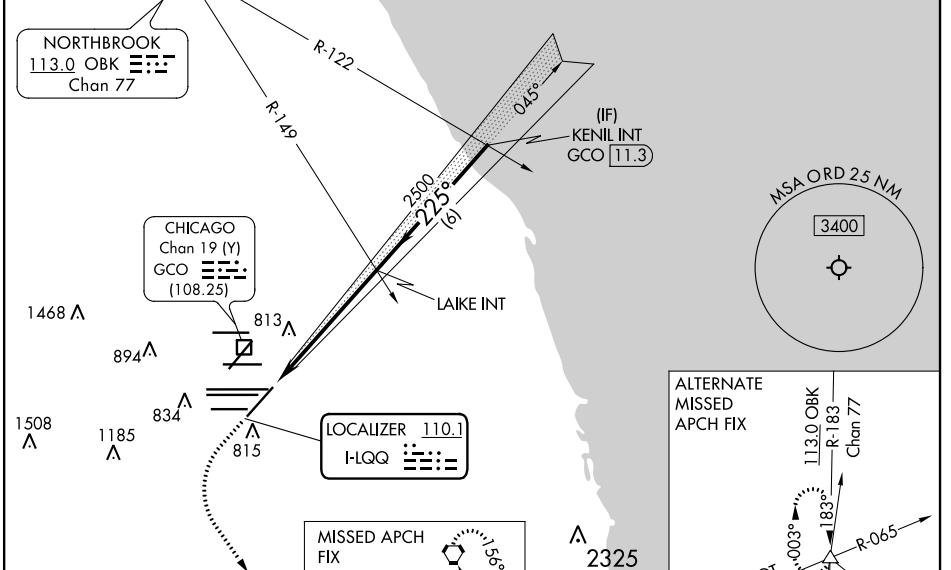
LOC I-LQJ	APP CRS	Rwy ldg TDZE	8075 654
<b>110.1</b>	<b>225°</b>	Apt Elev	680

RADAR required for procedure entry.		MAISR	MISSED APPROACH: Climb to 1100 then climbing left turn to 4000 direct CGT VORTAC.
Simultaneous approach authorized.			

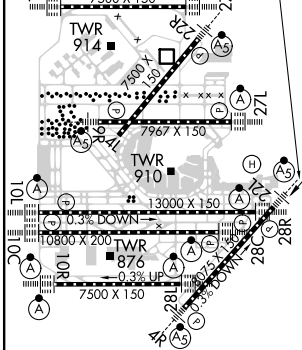
CHICAGO APP CON	O'HARE TOWERS			GND CON	(TWR CENTER)	CLNC DEL
<b>119.0 292.125</b>	<b>128.15 348.0</b>	<b>133.0 348.0</b>	<b>130.0 348.0</b>	<b>124.125</b>	<b>121.75</b>	<b>121.6</b>
	(Rwy 9L/27R)	(10R/28L)	(CENTER)	(TWR NORTH)	(OBND)	
	<b>120.75 121.15 126.9 132.7 348.0</b>			<b>118.05</b>	<b>121.9</b>	
				(TWR SOUTH)	(IBND)	
				<b>226.675</b>	(ALL TWRs)	

D-ATIS  
**135.4**  
**282.225**

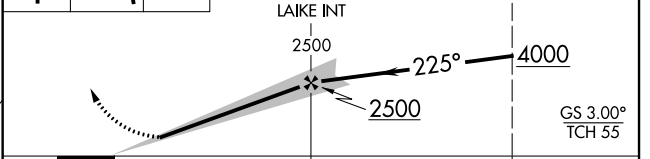
CPDLC



ELEV 680	TDZE 654
TDZ/Cl all Rwy's except 4L	
HIRL all Rwy's	
225° 5.6 NM from FAF	



MISSED APCH FIX	1100	4000	CGT	VGSI and ILS glidepath not coincident (VGSI Angle 3.00/TCH 73).
CHICAGO HEIGHTS	KENIL INT GCO 111.3			
114.2 CGT	LAIKE INT 2500			
Chan 89	225° 4000			



FAF to MAP 5.6 NM					
Knots	60	90	120	150	180
Min:Sec	5:36	3:44	2:48	2:14	1:52
CIRCLING	1220-1	540 (600-1)	1220-1½	1460-2½	780 (800-2½)

EC-3, 10 SEP 2020 to 08 OCT 2020

EC-3, 10 SEP 2020 to 08 OCT 2020