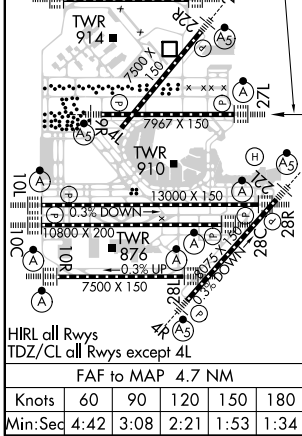
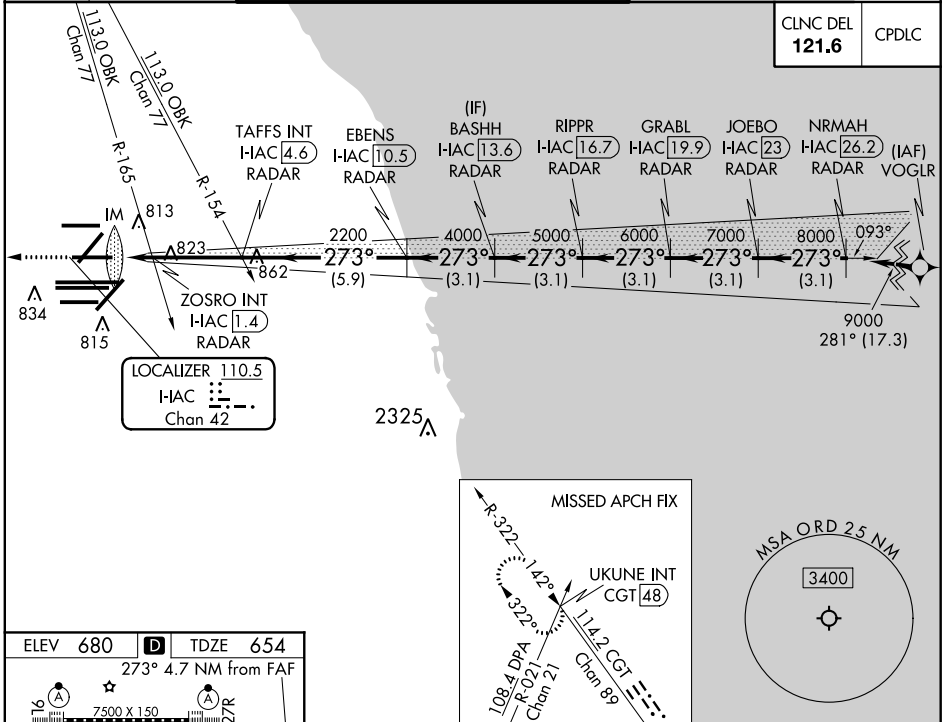


LOC/DME I-IAC 110.5 Chan 42	APP CRS 273°	Rwy ldg 7782 TDZE 654 Apt Elev 680
---	------------------------	--

ILS or LOC RWY 27L

CHICAGO O'HARE INTL (ORD)

From VOGLR: RNAV 1-GPS required.		ALSF-2		MISSING APPROACH: Climb to 1200 then climbing right turn to 4000 on heading 295° and on CGT VORTAC R-322 to UKUNE INT/CGT 48 DME and hold.	
Aircraft not GPS equipped - RADAR required for procedure entry. DME or RADAR required.		A			
Simultaneous approach authorized.					
D-ATIS 135.4	CHICAGO APP CON 119.0 292.125	O'HARE TOWERS 128.15 348.0 (Rwy 9L/27R) 133.0 348.0 (10R/28L)		GND CON (TWR CENTER) 124.125 (TWR NORTH) 121.75 (OBND)	(TWR SOUTH) 121.9 (IBND)
282.225		120.75 121.15 126.9 132.7 348.0 (CENTER)		226.675 (ALL TWS)	



1200	4000	CGT R-322	UKUNE INT	VGSI and ILS glidepath not coincident (VGSI Angle 3.00/TCH 67).			
hdg 295°				BASHH I-IAC 13.6 RADAR	GRABL I-IAC 19.9 RADAR	JOEBO I-IAC 23 RADAR	NRMAH I-IAC 26.2 RADAR
*LOC only	TAFFS INT I-IAC 4.6 RADAR	EBENS I-IAC 10.5 RADAR	RIPPR I-IAC 16.7 RADAR	GRABL I-IAC 19.9 RADAR	JOEBO I-IAC 23 RADAR	NRMAH I-IAC 26.2 RADAR	
I-IAC DME ANTENNA	ZOSRO INT I-IAC 1.4 RADAR						
I-IAC 0.1	2200	4000	5000	6000	7000	8000	9000
0.1	1.4	3.2 NM	-5.9 NM	3.1 NM	3.1 NM	3.1 NM	3.1 NM
0.1	1.4	3.2 NM	-5.9 NM	3.1 NM	3.1 NM	3.1 NM	3.1 NM
CATEGORY	A	B	C	D			
S-ILS 27L	854/18 200 (200-½)						
S-LOC 27L	1160/24	506 (500-½)	1160/55	506 (500-1)			
ZOSRO FIX MINIMUMS (DUAL VOR RECEIVERS OR DME REQUIRED)							
S-LOC 27L	1080/24	426 (400-½)	1080/40	426 (400-¾)			

EC-3, 10 SEP 2020 to 08 OCT 2020

EC-3, 10 SEP 2020 to 08 OCT 2020