

LOC/DME I-VZE 108.95 Chan 26 (Y)	APP CRS 273°	Rwy ldg 10800 TDZE 651 Apt Elev 680
---	------------------------	--

ILS or LOC RWY 28C

CHICAGO O'HARE INTL (ORD)

From VOGLR: RNAV 1-GPS required.
Aircraft not GPS equipped - RADAR required for procedure entry.
DME or RADAR required.

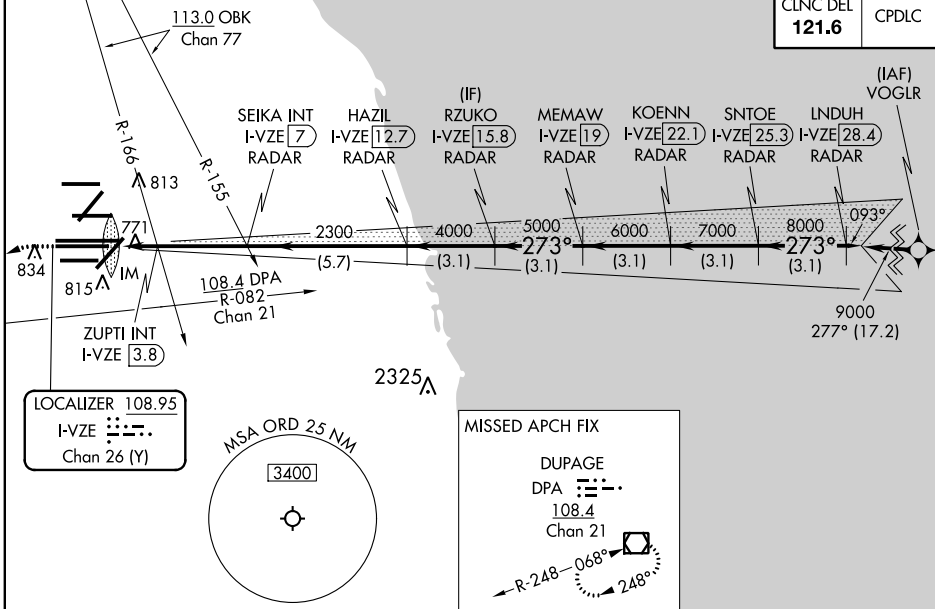


MISSED APPROACH: Climb to 1100 then climbing left turn to 4000 on heading 215° and DPA VOR/DME R-082 to DPA VOR/DME and hold.

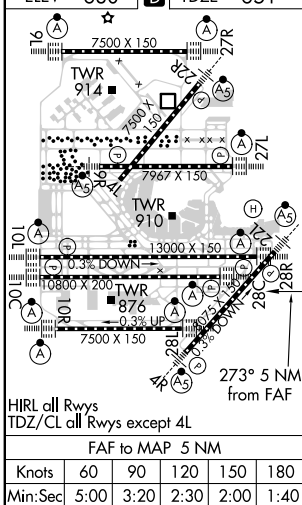
Simultaneous approach authorized.

D-ATIS 135.4 282.225	CHICAGO APP CON 119.0 292.125	O'HARE TOWERS 128.15 348.0 (Rwy 9L/27R) 133.0 348.0 (10R/28L) 120.75 121.15 126.9 132.7 348.0 (CENTER)	GND CON (TWR CENTER) 124.125 (TWR NORTH) 121.75 (OBND) 118.05 (TWR SOUTH) 121.9 (IBND) 226.675 (ALL TWRs)
--	---	--	--

CLNC DEL 121.6	CPDLC
--------------------------	-------



ELEV 680	TDZE 651
-----------------	-----------------



1100	4000	DPA R-082	DPA	RZUKO I-VZE [15.8] RADAR	KOENN I-VZE [22.1] RADAR	LNDUH I-VZE [28.4] RADAR
*LOC only.						
I-VZE [2]	ZUPTI INT I-VZE [3.8]	SEIKA INT I-VZE [7] RADAR	HAZIL I-VZE [12.7] RADAR	MEMAW I-VZE [19] RADAR	SNTOE I-VZE [25.3] RADAR	9000
IM	*I-VZE [2.9]	2300	4000	5000	6000	7000
0.1	0.9	0.8	-3.2 NM	5.7 NM	3.1 NM	3.1 NM
CATEGORY A						
S-ILS 28C 851/18 200 (200-½)						
S-LOC 28C 1200/24 549 (600-½) 1200/60 549 (600-1¼)						
ZUPTI FIX MINIMUMS (DUAL VOR RECEIVERS OR DME REQUIRED)						
S-LOC 28C 1040/24 389 (400-½) 1040/35 389 (400-¾)						

EC-3, 10 SEP 2020 to 08 OCT 2020

EC-3, 10 SEP 2020 to 08 OCT 2020