

LOC/DME I-VQX <b>110.75</b> Chan <b>44(Y)</b>	APP CRS <b>274°</b>	Rwy ldg TDZE Apt Elev	<b>7500</b> <b>667</b> <b>680</b>
---	------------------------	-----------------------------	---

# ILS or LOC RWY 28L

CHICAGO O'HARE INTL (ORD)

Aircraft not GPS equipped - RADAR required for procedure entry. DME or RADAR required.  
From VOGLR: RNAV 1-GPS required.

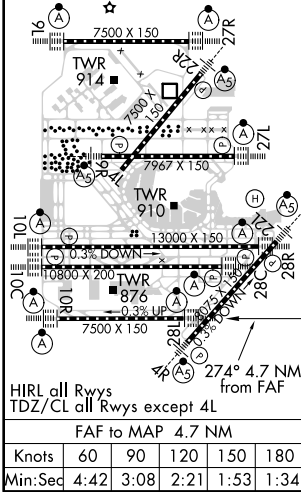
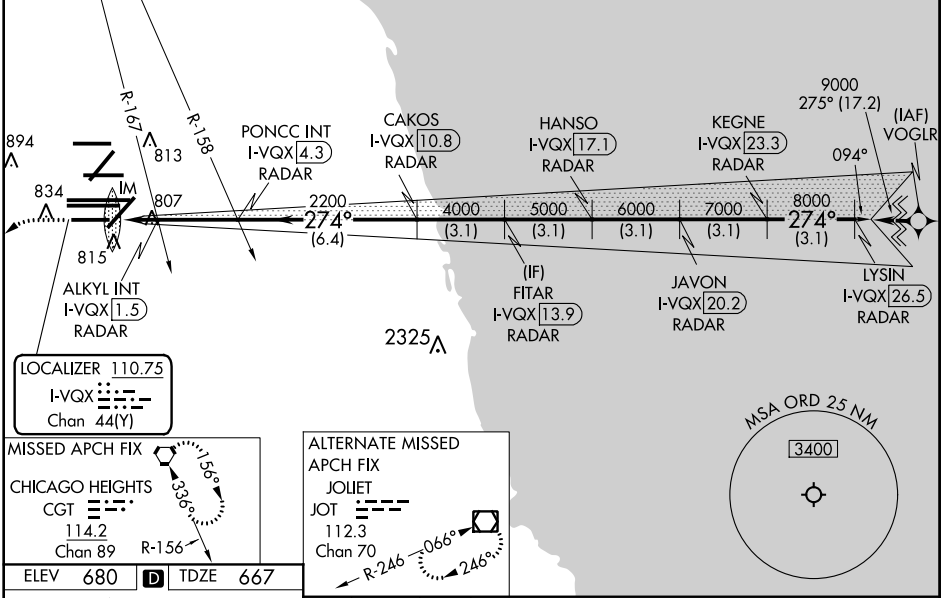
ALSF-2

MISSED APPROACH: Climb to 1200 then climbing left turn to 4000 direct CGT VORTAC and hold.

Simultaneous approach authorized.

D-ATIS <b>135.4</b> <b>282.225</b>	CHICAGO APP CON <b>119.0 292.125</b>	O'HARE TOWERS <b>128.15 348.0</b> (Rwy 9L/27R) <b>133.0 348.0</b> (10R/28L) <b>120.75 121.15 126.9 132.7 348.0</b> (CENTER)	GND CON (TWR CENTER) <b>124.125</b> (TWR NORTH) <b>121.75</b> (OBND) <b>118.05</b> (TWR SOUTH) <b>121.9</b> (IBND) <b>226.675</b> (ALL TWSR)
--	---	--	--

CNLC DEL <b>121.6</b>	CPDLC
--------------------------	-------



1200	4000	CGT	*LOC only.				
			FITAR I-VQX [13.9] RADAR JAVON I-VQX [20.2] RADAR LYSIN I-VQX [26.5] RADAR PONCC INT I-VQX [4.3] RADAR HANSO I-VQX [17.1] RADAR KEGNE I-VQX [23.3] RADAR I-VQX [0.3] IM *I-VQX [0.8] ALKYL INT I-VQX [1.5] RADAR CAKOS I-VQX [10.8] RADAR I-VQX [2200]				
CATEGORY A    B    C    D			0.2 NM    0.9 NM    0.7 NM    2.9 NM    6.4 NM    3.1 NM    3.1 NM    3.1 NM    3.1 NM    3.1 NM				
S-ILS 28L			867/18 200 (200-½)				
S-LOC 28L			1240/24 573 (600-½)		1240-1¼ 573 (600-1¼)		
ALKYL FIX MINIMUMS (DUAL VOR RECEIVERS OR DME REQUIRED)							
S-LOC 28L			1060/24 393 (400-½)		1060/35 393 (400-½)		

EC-3, 10 SEP 2020 to 08 OCT 2020

EC-3, 10 SEP 2020 to 08 OCT 2020