

LOC I-FJU 110.1	APP CRS 045°	Rwy ldg TDZE Apt Elev	8075 661 680
---------------------------	------------------------	-----------------------------	---

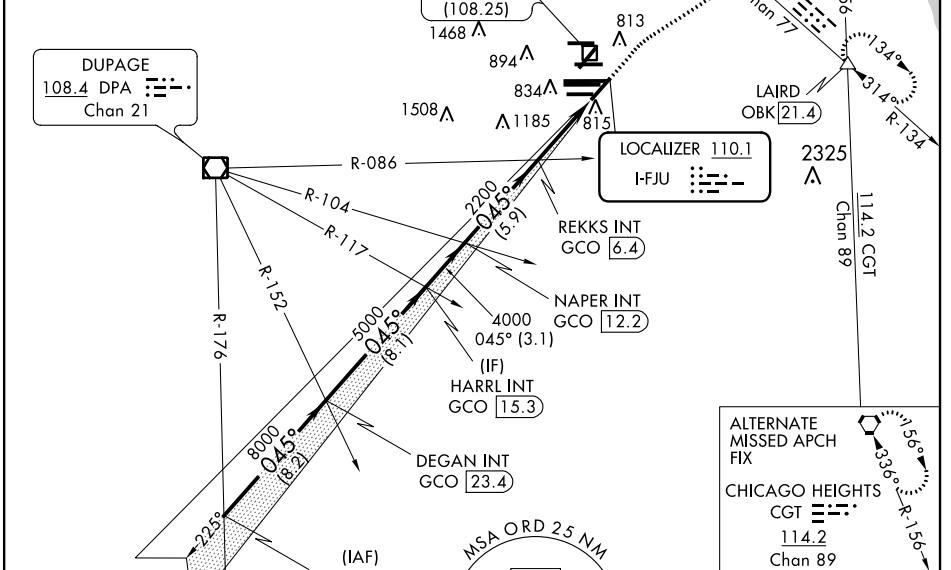
ILS or LOC RWY 4R

CHICAGO O'HARE INTL (ORD)

RADAR required for procedure entry.		MALSR	MISSED APPROACH: Climb to 1200 then climbing right turn to 4000 on heading 060° and OBK VOR/DME R-134 to LAIRD INT/OBK 21.4 DME and hold.	
Simultaneous approach authorized.				

CHICAGO APP CON 119.0 292.125	O'HARE TOWERS 128.15 348.0 (Rwy 9L/27R) 133.0 348.0 (10R/28L) 348.0 (CENTER)	GND CON (TWR CENTER) 121.75 (OBND) 121.9 (IBND)	CLNC DEL 121.6
---	--	---	--------------------------

D-ATIS 135.4 282.225
--



RAHNN INT GCO [31.6]	DEGAN INT GCO [23.4]	HARRL INT GCO [15.3]	NAPER INT GCO [12.2]	REKKS INT GCO [6.4]	LAIRD
<p>11000</p> <p>GS 3.00° TCH 52</p> <p>8.2 NM 8.1 NM 3.1 NM 5.9 NM 4.4 NM</p> <p>8000 045° 5000 4000 2200</p> <p>2128</p>					

ELEV 680	TDZE 661
----------	----------

HRL all Rwys
TDZ/CL all Rwys except 4L
FAF to MAP 4.4 NM

Knots	60	90	120	150	180
Min:Sec	4:24	2:56	2:12	1:46	1:28

EC-3, 10 SEP 2020 to 08 OCT 2020

EC-3, 10 SEP 2020 to 08 OCT 2020