

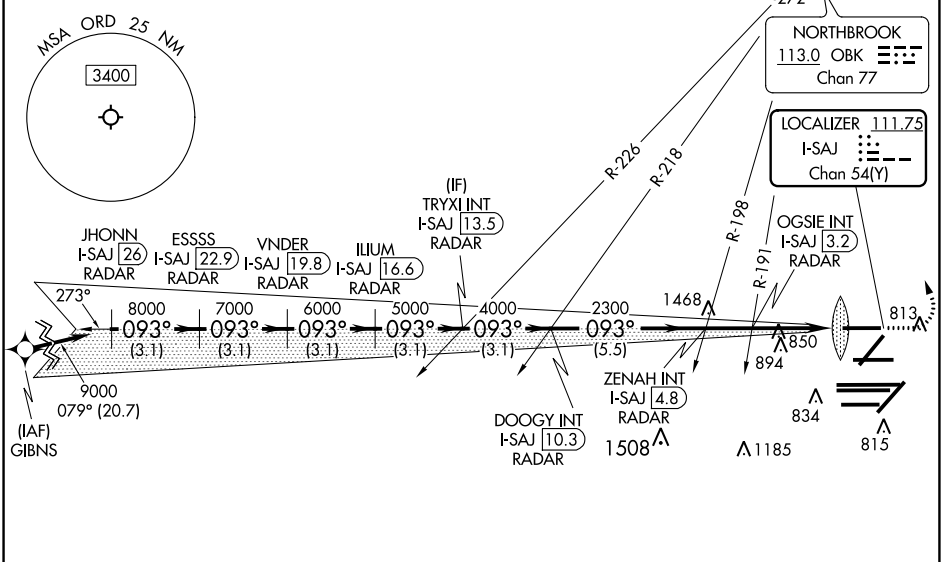
LOC/DME I-SAJ 111.75 Chan 54 (Y)	APP CRS 093°	Rwy Idg 7500	TDZE 668
Apt Elev 680			

ILS or LOC RWY 9L

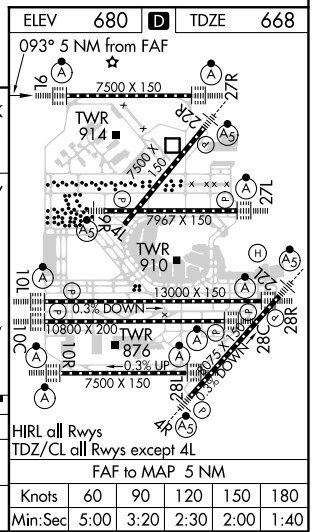
CHICAGO O'HARE INTL (ORD)

RNAV-1 GPS or RADAR required for procedure entry. RADAR or DME required.		ALSF-2 		MISSED APPROACH: Climb to 1100 then climbing left turn to 4000 direct OBK VOR/DME and hold, continue climb-in-hold to 4000.	
Simultaneous approach authorized.					
CHICAGO APP CON 119.0 292.125	O'HARE TOWERS 128.15 348.0 (Rwy 9L/27R) 133.0 348.0 (110R/28L) 124.125 (TWR NORTH) 121.75 (OBND) 118.05 (TWR SOUTH) 121.9 (IBND) 226.675 (ALL TWRS)			CLNC DEL 121.6	

D-ATIS 135.4 282.225	CPDLC
--	-------



JHONN I-SAJ 26 RADAR	ESSSS I-SAJ 22.9 RADAR	VNDER I-SAJ 19.8 RADAR	ILIUM I-SAJ 16.6 RADAR	DOOGY INT I-SAJ 10.3 RADAR	TRYXI INT I-SAJ 13.5 RADAR	ZENAH INT I-SAJ 4.8 RADAR	OGSIE INT I-SAJ 3.2 RADAR	I-SAJ DME ANTENNA IM	I-SAJ 0.2	I-SAJ 1
3.1 NM	3.1 NM	3.1 NM	3.1 NM	3.1 NM	5.5 NM	1.6 NM	2.2 NM	1.1 NM	0.1 NM	
CATEGORY	A	B		C		D				
S-ILS 9L	868/18		200 (200-1/2)							
S-LOC 9L	1100/24	432 (500-1/2)		1100/40		432 (500-3/4)				



EC-3, 10 SEP 2020 to 08 OCT 2020

EC-3, 10 SEP 2020 to 08 OCT 2020