

LOC/DME I-BYW 110.9 Chan 46	APP CRS 091°	Rwy Idg 7500 TDZE 680 Apt Elev 680
--	------------------------	---

ILS PRM Y RWY 10R (CLOSE PARALLEL)

CHICAGO O'HARE INTL (ORD)

RNAV 1-GPS or RADAR required for procedure entry. DME or RADAR required.
From GIBNS: RNAV-1 GPS required.

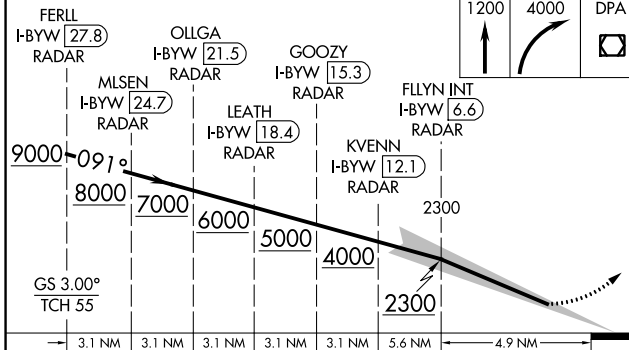
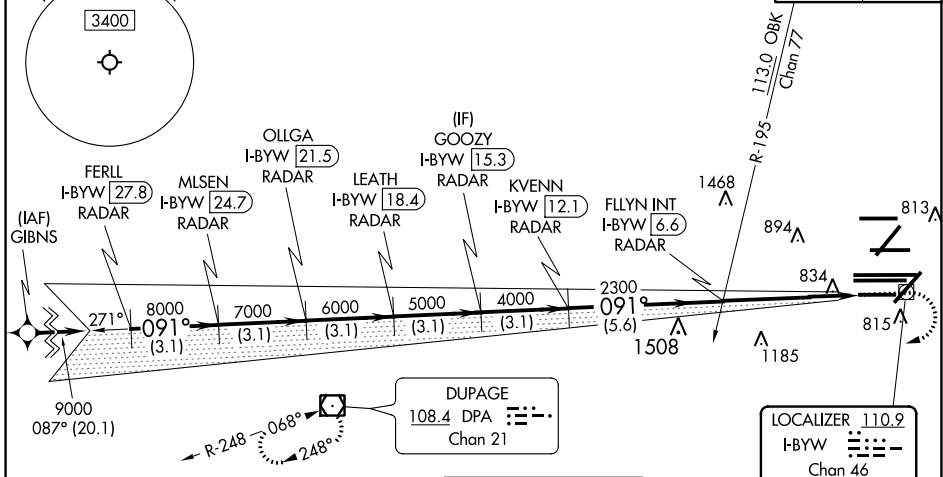
ALSF-2
MISSED APPROACH: Climb to 1200 then climbing right turn to 4000 direct DPA VOR/DME and hold.

Simultaneous approach authorized. Use of FD or AP required during simultaneous operations. Dual VHF Comm requirements. See additional requirements on AAUP. Inop table does not apply to S-ILS 10R all Cats. Rwy 10R helicopter visibility reduction below 3/4 SM NA.

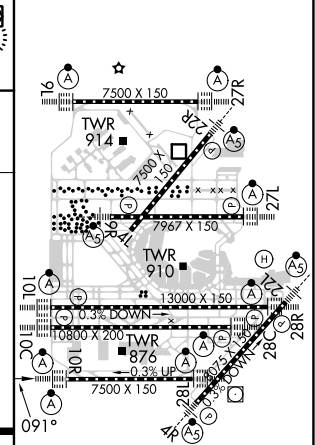
D-ATIS 135.4 282.225	CHICAGO APP CON 119.0 292.125	O'HARE TOWERS 128.15 348.0 (Rwy 9L/27R) 133.0 348.0 (10R/28L) 120.75 121.15 126.9 132.7 348.0 (CENTER) PRM 128.05
--	---	--

GND CON (TWR CENTER) 124.125 (TWR NORTH) 121.75 (OBND) 118.05 (TWR SOUTH) 121.9 (IBND) 226.675 (ALL TWRs)

CLNC DEL 121.6	CPDLC
--------------------------	-------



ELEV 680	TDZE 680
----------	----------



CATEGORY	A	B	C	D
S-ILS 10R		930-3/4	250 (300-3/4)	

HIRL all Rwys
TDZ/CL all Rwys except 4L

EC-3, 10 SEP 2020 to 08 OCT 2020

EC-3, 10 SEP 2020 to 08 OCT 2020