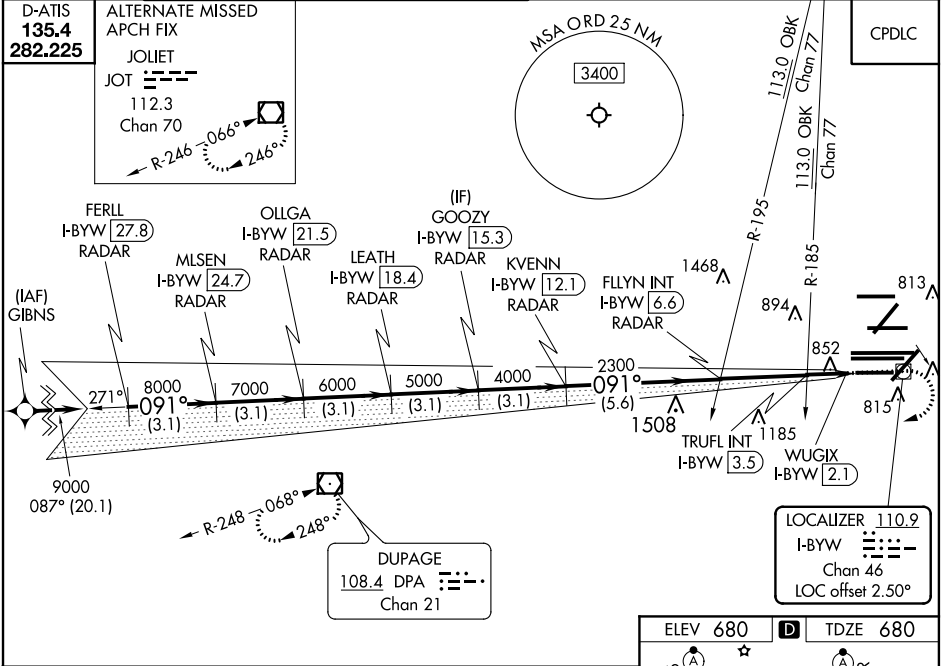


LOC/DME I-BYW 110.9 Chan 46	APP CRS 091°	Rwy Idg 7500 TDZE 680 Apt Elev 680
--	------------------------	---

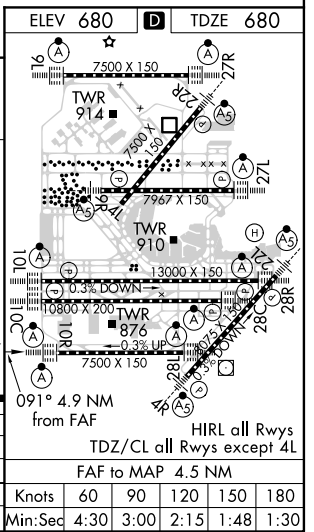
ILS Y or LOC Y RWY 10R

CHICAGO O'HARE INTL (ORD)

RNAV 1-GPS or RADAR required for procedure entry. DME or RADAR required. From GIBNS: RNAV-1 GPS required.		ALSIF-2 	MISSED APPROACH: Climb to 1200 then climbing right turn to 4000 direct DPA VOR/DME and hold.
CHICAGO APP CON 119.0 292.125		O'HARE TOWERS 128.15 348.0 (Rwy 9L/27R) 133.0 348.0 (10R/28L) 126.9 132.7 348.0 (CENTER)	GND CON (TWR CENTER) (TWR NORTH) (TWR SOUTH) 124.125 (TWR NORTH) 118.05 (TWR SOUTH) 226.675 (ALL TWSRS)
D-ATIS 135.4 282.225		ALTERNATE MISSED APCH FIX JOLIET JOT 112.3 Chan 70 	CLNC DEL 121.6



FERLL I-BYW [27.8] RADAR	OLLGA I-BYW [21.5] RADAR	GOOZY I-BYW [15.3] RADAR	FLYIN INT I-BYW [6.6] RADAR	WUGIX I-BYW [2.1] RADAR				
MLSEN I-BYW [24.7] RADAR	LEATH I-BYW [18.4] RADAR	KVENN I-BYW [12.1] RADAR	TRUFL INT I-BYW [3.5] RADAR					
9000' 091° 8000' 7000' 6000' 5000' 4000' 2300' 2300' *1220'								
GS 3.00° TCH 55								
3.1 NM 3.1 NM 3.1 NM 3.1 NM 3.1 NM 5.6 NM 3.1 NM 0.6 0.8 0.4								
CATEGORY	A		B		C		D	
S-ILS 10R	930-3/4		250 (300-3/4)		1220-1		540 (600-1)	
S-LOC 10R	1220-3/4		540 (600-3/4)		1220-1		540 (600-1)	
TRUFL FIX MINIMUMS (DUAL VOR RECEIVERS OR DME REQUIRED)								
S-LOC 10R	1120-3/4		440 (500-3/4)					



EC-3, 10 SEP 2020 to 08 OCT 2020

EC-3, 10 SEP 2020 to 08 OCT 2020