

| | | | |
|---|------------------------|-----------------------------|---|
| LOC/DME I-HZJ 110.75 Chan 44 (Y) | APP CRS 094° | Rwy Idg TDZE Apt Elev | 7500 680 680 |
|---|------------------------|-----------------------------|---|

ILS Z RWY 10R (SA CAT I)

CHICAGO O'HARE INTL (ORD)

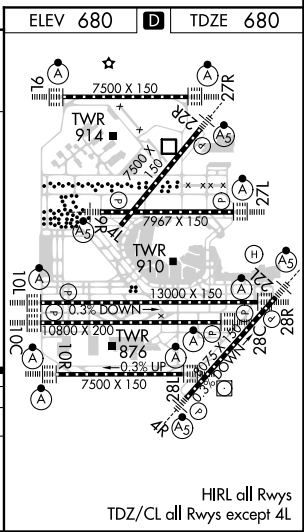
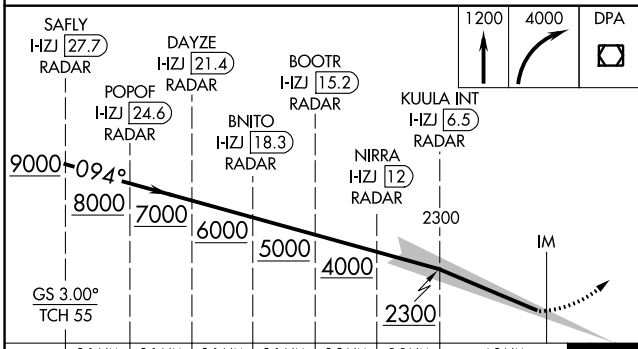
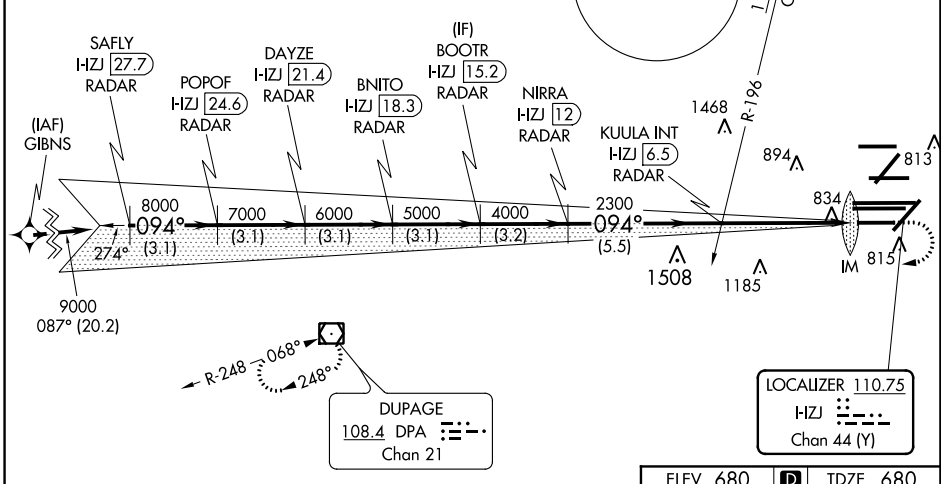
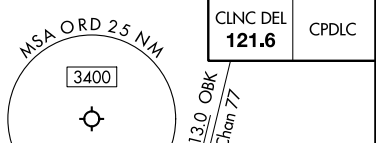
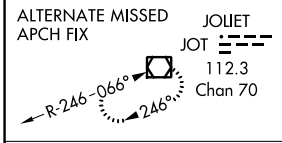
RNAV 1-GPS or RADAR required for procedure entry. DME or RADAR required.
From GIBNS: RNAV-1 GPS required.

Simultaneous approach authorized. Requires specific OPSPEC, MSPEC, or LOA approval and use of HUD to DH.

ALSF-2

MISSED APPROACH: Climb to 1200 then climbing right turn to 4000 direct DPA VOR/DME and hold.

| | | | | |
|------------------------|---|--|---|---|
| D-ATIS 135.4 | CHICAGO APP CON 282.225 119.0 292.125 | O'HARE TOWERS (Rwy 9L/27R) 128.15 348.0 (10R/28L) 133.0 348.0 (CENTER) 120.75 121.15 126.9 132.7 348.0 | GND CON (TWR NORTH) 124.125 (TWR SOUTH) 118.05 (ALL TWRs) 226.675 | (TWR CENTER) (CBIND) 121.75 (IBND) 121.9 |
|------------------------|---|--|---|---|



| | | | | | | | |
|--|--------|------------|--------|------------|--------|------------|-------|
| 3.1 NM | 3.1 NM | 3.1 NM | 3.1 NM | 3.2 NM | 5.5 NM | 4.9 NM | 1113' |
| CATEGORY A | | CATEGORY B | | CATEGORY C | | CATEGORY D | |
| S-ILS 10R | | RA 165/14 | | 150 DA 830 | | | |
| SA CATEGORY I ILS-SPECIAL AIRCREW & AIRCRAFT CERTIFICATION REQUIRED | | | | | | | |

EC-3, 10 SEP 2020 to 08 OCT 2020

EC-3, 10 SEP 2020 to 08 OCT 2020