

LOC/DME I-ZJ <b>110.75</b> Chan 44 (Y)	APP CRS <b>094°</b>	Rwy Idg TDZE <b>680</b> Apt Elev <b>680</b>	<b>7500</b>
--	------------------------	---	-------------

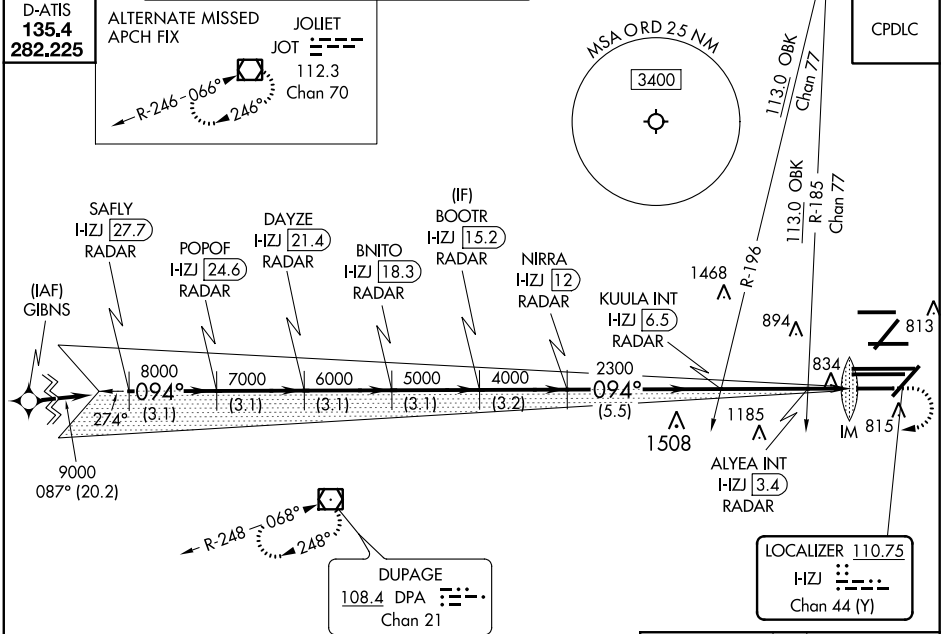
# ILS Z or LOC Z RWY 10R

CHICAGO O'HARE INTL (ORD)

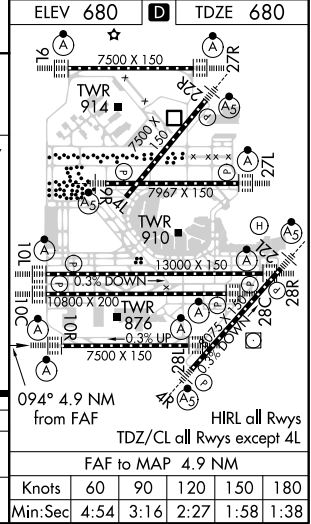
RNAV 1-GPS or RADAR required for procedure entry. DME or RADAR required.  
From GIBNS: RNAV-1 GPS required.  
Simultaneous approach authorized.  
For inop ALS, increase S-LOC 10R Cat C and D visibility to RVR 6000.

ALSF-2  
MISSED APPROACH: Climb to 1200 then climbing right turn to 4000 direct DPA VOR/DME and hold.

CHICAGO APP CON <b>119.0 292.125</b>	O'HARE TOWERS <b>128.15 348.0</b> (Rwy 9L/27R) <b>126.9 132.7 348.0</b> (CENTER)	GND CON (TWR NORTH) <b>124.125</b> (TWR SOUTH) <b>118.05</b> (ALL TWRS) <b>226.675</b>	(TWR CENTER) <b>121.75</b> (OBND) <b>121.9</b> (BND)	CLNC DEL <b>121.6</b>
---	--	---	--	--------------------------



SAFLY I-ZJ [27.7] RADAR	DAYZE I-ZJ [21.4] RADAR	BOOTR I-ZJ [15.2] RADAR	CUULA INT I-ZJ [6.5] RADAR	ALYEA INT I-ZJ [3.4] RADAR	1200	4000	DPA
POPOF I-ZJ [24.6] RADAR	BNITO I-ZJ [18.3] RADAR	NIIRRA I-ZJ [12] RADAR	ALYEA INT I-ZJ [3.4] RADAR	2300			*LOC only
9000 → 094°				2300	*1220		
8000 → 094°							
7000 → 094°							
6000 → 094°							
5000 → 094°							
4000 → 094°							
GS 3.00° TCH 55							
3.1 NM	3.1 NM	3.1 NM	3.1 NM	3.2 NM	5.5 NM	3.1 NM	0.7 NM 0.1 NM
CATEGORY	A		B		C		D
S-ILS 10R	880/18		200 (200-½)				
S-LOC 10R	1100/24		420 (500-½)				



EC-3, 10 SEP 2020 to 08 OCT 2020

EC-3, 10 SEP 2020 to 08 OCT 2020