

WAAS CH 69508 W27B	APP CRS 273°	Rwy Idg TDZE Apt Elev	7500 664 680
--	------------------------	-----------------------------	---

RNAV (GPS) RWY 27R

CHICAGO O'HARE INTL (ORD)

RNP APCH.

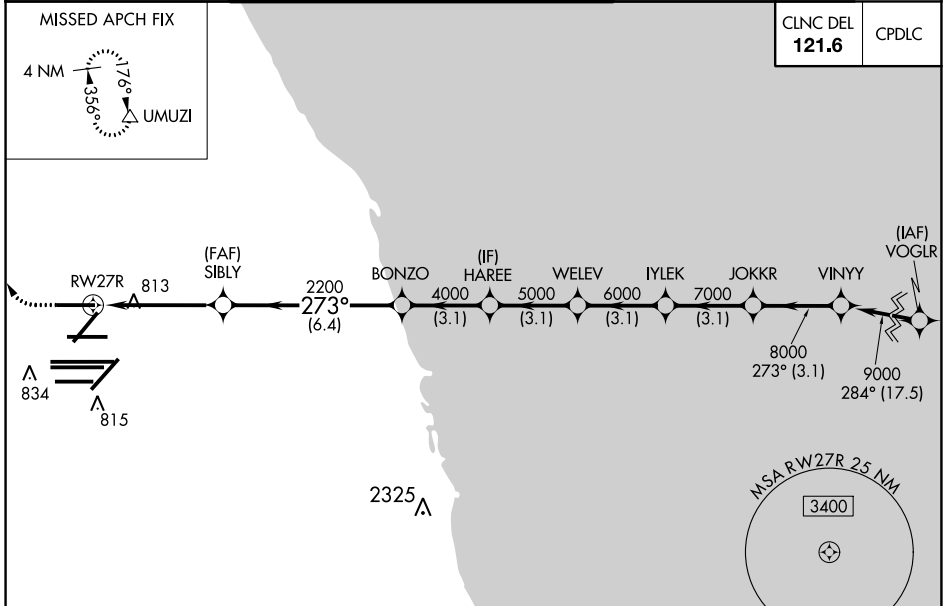
RADAR required for procedure entry.

⚠ For uncompensated Baro-VNAV systems, procedure NA below -19°C or above 54°C.
Simultaneous approach authorized. LNAV procedure NA during simultaneous operations.
Use of FD or AP providing RNAV track guidance required during simultaneous operations.

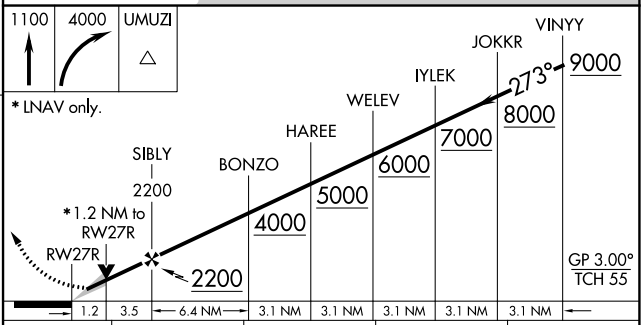
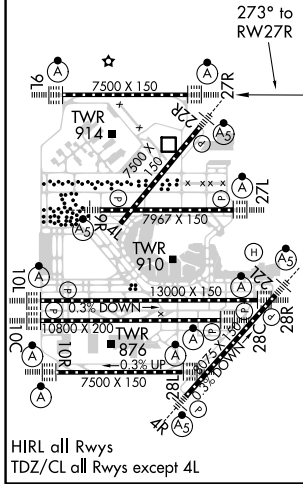
ALSIF-2

MISSED APPROACH:
Climb to 1100 then climbing right turn to 4000 direct UMUZI and hold.

D-ATIS 135.4	CHICAGO APP CON 119.0 292.125	O'HARE TOWERS				GND CON	(TWR CENTER)
282.225		128.15	348.0 (Rwy 9L/27R)	133.0	348.0 (10R/28L)	(TWR NORTH)	121.75 (OBND)
		120.75	121.15	126.9	132.7	(TWR SOUTH)	121.9 (IBND)
					348.0 (CENTER)	(ALL TWRs)	226.675



ELEV 680	D	TDZE 664
----------	----------	----------



CATEGORY	A	B	C	D
LPV DA		864/18	200 (200-1/2)	
LNAV/VNAV DA		961/24	297 (300-1/2)	
LNAV MDA	1120/24	456 (500-1/2)	1120/45	456 (500-7/8)

EC-3, 10 SEP 2020 to 08 OCT 2020

EC-3, 10 SEP 2020 to 08 OCT 2020