

CHICAGO, ILLINOIS

AL-166 (FAA)


# RNAV (GPS) PRM RWY 10C (CLOSE PARALLEL)

CHICAGO O'HARE INTL (ORD)

WAAS CH <b>81934</b> <b>W10B</b>	APP CRS <b>093°</b>	Rwy Idg <b>10540</b> TDZE <b>669</b> Apt Elev <b>680</b>
--	------------------------	--

**▼** DME/DME RNP-0.3 NA. Simultaneous approach authorized. Dual VHF comm required. See additional requirements on AAUP. For uncompensated Baro-VNAV systems, LNAV/VNAV NA below -1°C (-2°F) or above 54°C (130°F). Use of FD or AP providing RNAV track guidance required during simultaneous operations.

ALSF-2

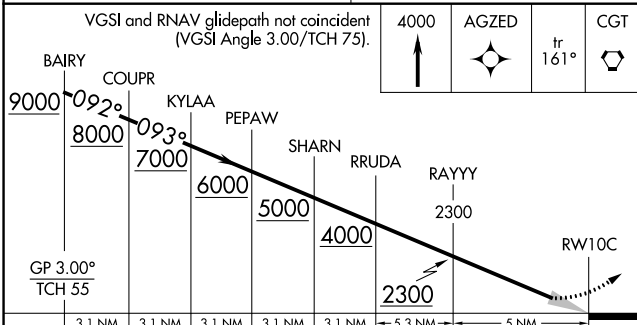
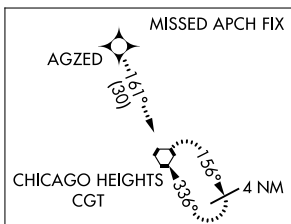
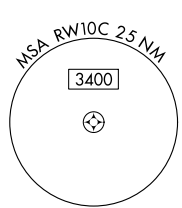
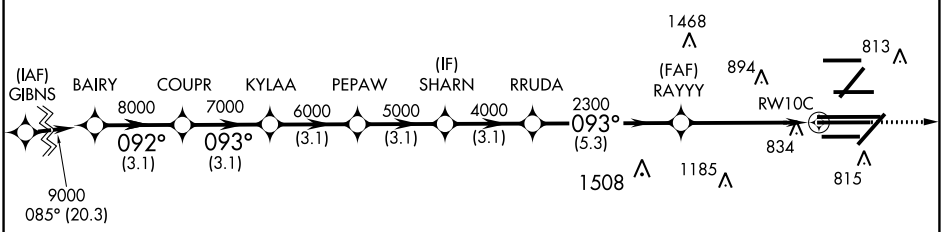


MISSED APPROACH: Climb to 4000 direct AGZED and on track 161° to CGT VORTAC and hold.

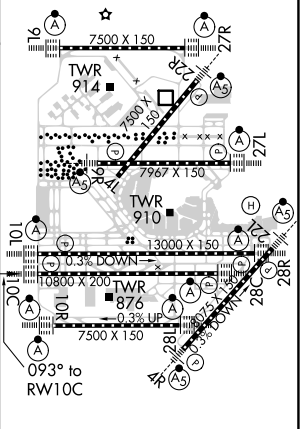
D-ATIS <b>135.4</b> <b>282.225</b>	CHICAGO APP CON <b>119.0 292.125</b>	O'HARE TOWERS <b>128.15 348.0</b> (Rwy 9L/27R) <b>133.0 348.0</b> (10R/28L) <b>120.75 121.15 126.9 132.7 348.0</b> (CENTER) <b>PRM 119.625</b>	GND CON (TWR NORTH) <b>124.125</b> (TWR SOUTH) <b>118.05</b> (ALL TWRs) <b>226.675</b>	(TWR CENTER) <b>121.75</b> (CBND) (IBND) <b>121.9</b>
--	--	---	--	--

CLNC DEL <b>121.6</b>	CPDLC
--------------------------	-------

## RADAR REQUIRED



ELEV 680	<b>D</b>	TDZE 669
----------	----------	----------



3.1 NM	3.1 NM	3.1 NM	3.1 NM	3.1 NM	5.3 NM	5 NM
CATEGORY	A		B		C	D
LPV DA			869/18		200 (200-½)	
LNAV/VNAV DA			1056/40		387 (400-¾)	

HIRL all Rwy's  
TDZ/CL all Rwy's except 4L

CHICAGO, ILLINOIS  
Orig-A 17AUG17

41°58'N-87°54'W

CHICAGO O'HARE INTL (ORD)

# RNAV (GPS) PRM RWY 10C (CLOSE PARALLEL)

EC-3, 10 SEP 2020 to 08 OCT 2020

EC-3, 10 SEP 2020 to 08 OCT 2020