

RNAV (GPS) PRM Y RWY 28L

(CLOSE PARALLEL)

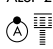
CHICAGO O'HARE INTL (ORD)

WAAS CH 93839 W28E	APP CRS 275°	Rwy Idg TDZE Apt Elev	7500 667 680
--	------------------------	-----------------------------	---

RNP APCH. RADAR required.

▼ For uncompensated Baro-VNAV systems, LNAV/VNAV NA below -19°C or above 54°C. Simultaneous approach authorized. Use of FD or AP required during simultaneous operations. Dual VHF comm required. See additional requirements on AAUP.

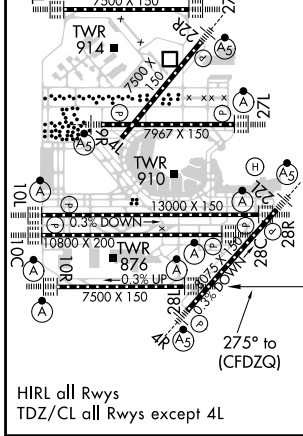
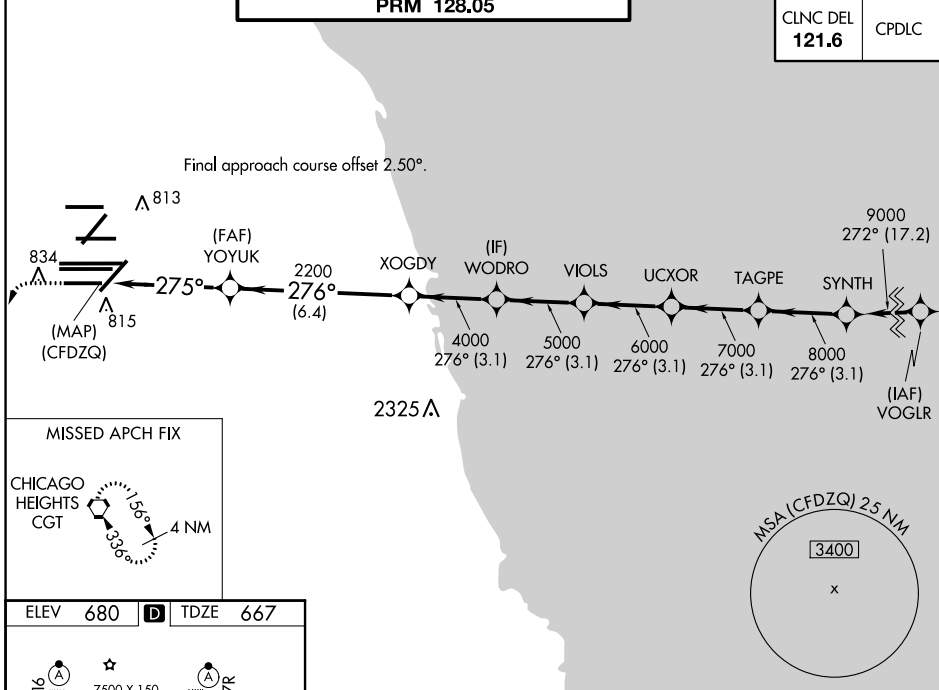
ALSf-2




MISSED APPROACH: Climb to 1200 then climbing left turn to 4000 direct CGT VORTAC and hold.

D-ATIS 135.4 282.225	CHICAGO APP CON 119.0 292.125	O'HARE TOWERS 128.15 348.0 (Rwy 9L/27R) 133.0 348.0 (10R/28L) 120.75 121.15 126.9 132.7 348.0 (CENTER)	GND CON (TWR CENTER) 124.125 (TWR NORTH) 121.75 (OBND) 118.05 (TWR SOUTH) 121.9 (IBND) 226.675 (ALL TWRs)
--	---	---	---

CLNC DEL 121.6	CPDLC
--------------------------	-------



ELEV 680	TDZE 667						
1200	4000	CGT					
							
(CFDZQ)	YOYUK	XOGDY	WODRO	VIOLS	UCXOR	TAGPE	SYNTH
	2200	4000	5000	6000	7000	8000	9000
	275°					276°	
	4.7 NM	6.4 NM	3.1 NM	3.1 NM	3.1 NM	3.1 NM	3.1 NM
GP 3.00°	TCH 55						
CATEGORY	A	B	C	D			
LPV DA	917/24		250 (300-½)				
LNAV/VNAV DA	1090/40		423 (500-¾)				

RNAV (GPS) PRM Y RWY 28L (CLOSE PARALLEL)

EC-3, 10 SEP 2020 to 08 OCT 2020

EC-3, 10 SEP 2020 to 08 OCT 2020