

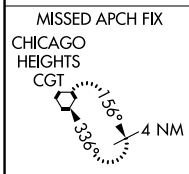
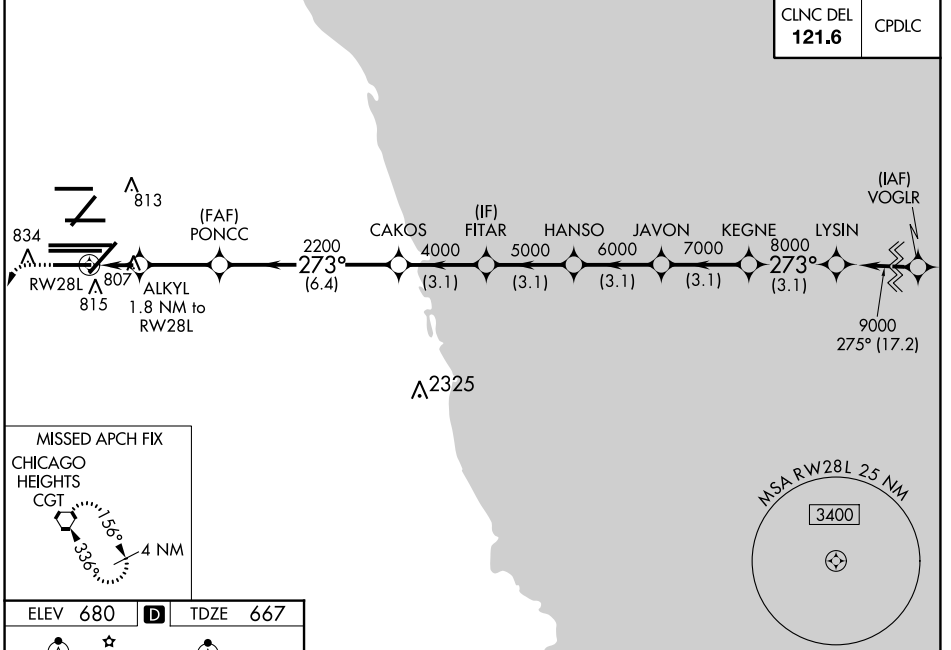
WAAS CH 65837 W28D	APP CRS 273°	Rwy Idg TDZE Apt Elev	7500 667 680
----------------------------------------	------------------------	-----------------------------	-----------------------------------------

RNAV (GPS) Z RWY 28L

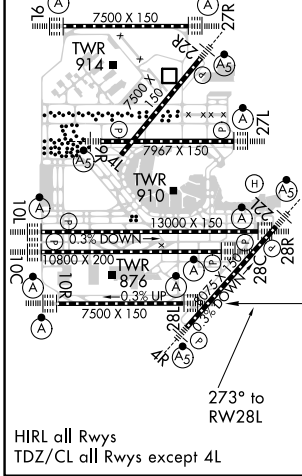
CHICAGO O'HARE INTL (ORD)

RNP APCH.		ALSF-2		MISSED APPROACH: Climb 1200 then climbing left turn to 4000 direct CGT VORTAC and hold.	
⚠ Simultaneous approach authorized. LNAV procedure NA during simultaneous operations. For uncompensated Baro-VNAV systems, LNAV/VNAV NA below -19°C or above 54°C. Use of FD or AP required during simultaneous operations.					
D-ATIS 135.4	CHICAGO APP CON 119.0 292.125	O'HARE TOWERS 128.15 348.0 (Rwy 9L/27R) 133.0 348.0 (10R/28L)		GND CON (TWR NORTH) 124.125 (TWR SOUTH) 118.05 (ALL TWRS) 226.675	(TWR CENTER) 121.75 (OBND) (IBND) 121.9

CLNC DEL 121.6	CPDLC
--------------------------	-------



ELEV 680	D	TDZE 667
-----------------	----------	-----------------



1200	4000	CGT				
*LNAV only.						
ALKYL	CAKOS	FITAR	HANSO	JAVON	KEGNE	LYSIN
1.8 NM to RW28L						
*1.1 NM to RW28L	2200	4000	5000	6000	7000	8000
RW28L	*1280	2200				9000
1.1 NM	0.7	2.9 NM	6.4 NM	3.1 NM	3.1 NM	3.1 NM
CATEGORY	A		B		C	
LPV	DA		867/18		200 (200-1/2)	
LNAV/VNAV	DA		1090/40		423 (500-3/4)	
LNAV	MDA		1060/24		393 (400-1/2)	
					1060/35	
					393 (400-5/8)	

EC-3, 10 SEP 2020 to 08 OCT 2020

EC-3, 10 SEP 2020 to 08 OCT 2020