

HI-ILS or LOC Z RWY 26

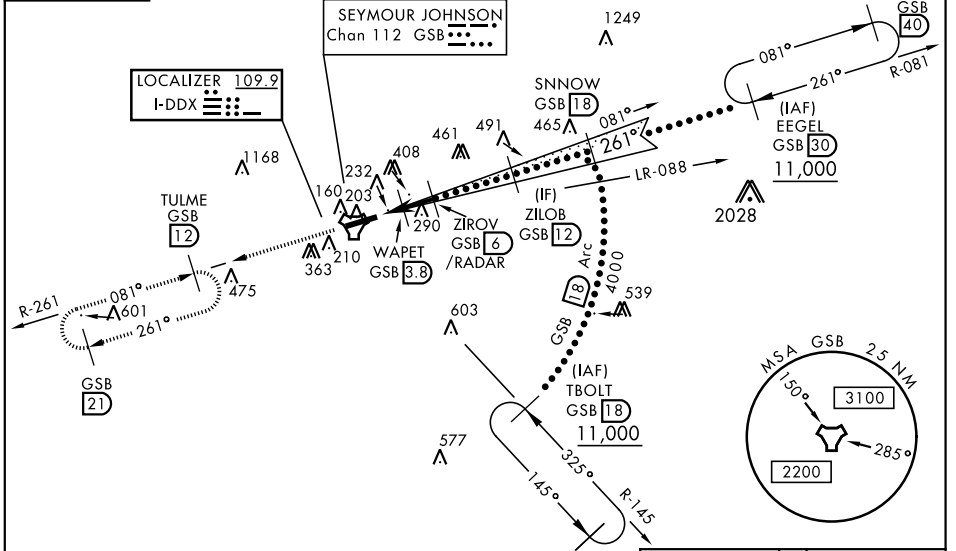
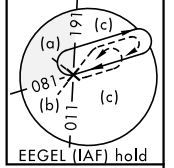
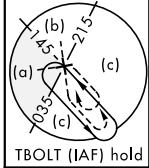
LOC I-DDX 109.9	APCH CRS 261°	Rwy ldg 11,760 TDZE 109 Arprt Elev 109	JAL-169 [USAF]	SEYMOUR JOHNSON AFB (KGSB)
---------------------------	-------------------------	--	----------------	----------------------------

* When ALS inop, increase RVR to 40 and vis to 3/4 mile.
 ** When ALS inop, increase RVR to 60 and vis to 1 1/2 miles.
 *** Circling N of Rwy 8-26 not authorized.



MISSED APPROACH: Climb to 2200 via GSB TACAN R-261 to TULME and hold.

ATIS ★ 317.625	SEYMOUR JOHNSON APP CON 258°-110° 123.7 290.9 111°-257° 119.7 273.6	SEYMOUR JOHNSON TOWER ★ 126.25 370.875	GND CON 138.1 275.8	CLNC DEL 128.025 270.8
--------------------------	---	--	-------------------------------	----------------------------------

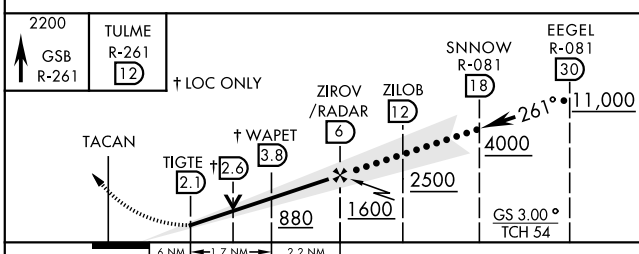


SE-2, 10 SEP 2020 to 08 OCT 2020

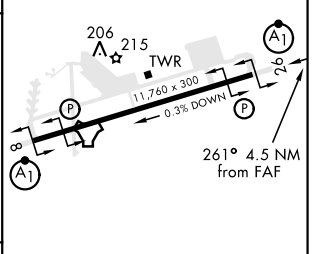
SE-2, 10 SEP 2020 to 08 OCT 2020

RADAR or DME REQUIRED

EMERG SAFE ALT 100 NM 3700



ELEV 109	TDZE 109
----------	----------



CATEGORY	C		D		E
	S-ILS 26 *	309/24		200 (200-1/2)	
S-LOC 26 **	500/35		391 (400-3/4)		
*** CIRCLING	680-1 1/2		700-2		760-2 1/4
	571 (600-1 1/2)		591 (600-2)		651 (700-2 1/4)

HIRL Rwy 8-26					
FAF to MAP 3.9 NM					
Knots	120	140	160	180	200
Min:Sec	1:57	1:40	1:28	1:18	1:10

HI-ILS or LOC Z RWY 26