

GOLDSBORO, NORTH CAROLINA

HI-ILS or LOC Z RWY 8

LOC I-GSB 109.3	APCH CRS 081°	Rwy ldg 11,760 TDZE 73 Arprt Elev 109
---------------------------	-------------------------	--

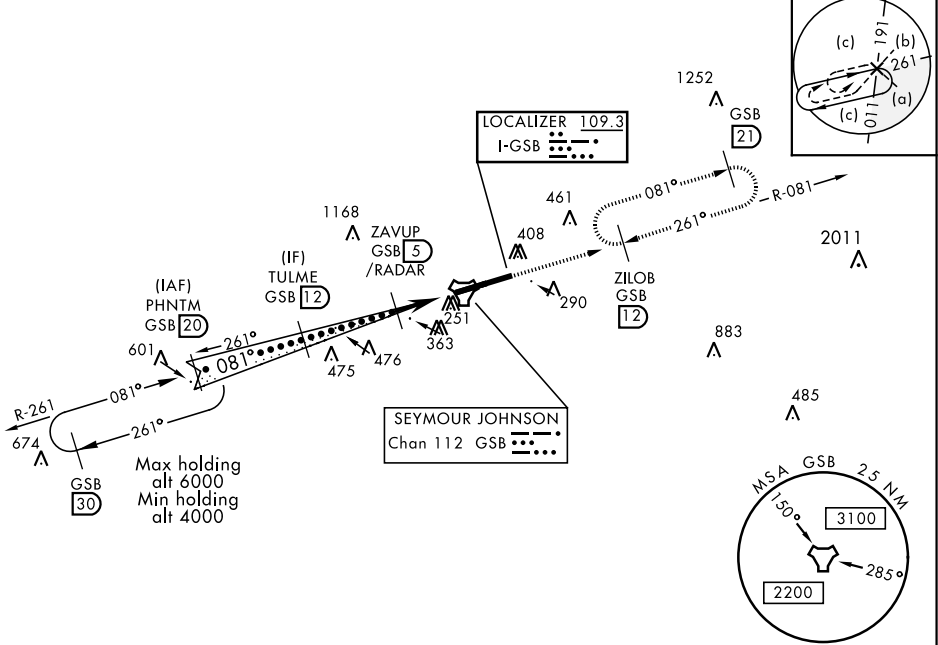
JAL-169 [USAF]

SEYMOUR JOHNSON AFB (KGSB)

▽ * When ALS inop, increase RVR to 40 and vis to ¾ mile. ** When ALS inop, increase vis to 1 ¾ miles.	ALSF-1 	MISSED APPROACH: Climb to 2300 via GSB R-081 to ZILOB and hold.

ATIS ★ 317.625	SEYMOUR JOHNSON APP CON 258°-110° 123.7 290.9 111°-257° 119.7 273.6	SEYMOUR JOHNSON TOWER ★ 126.25 370.875	GND CON 138.1 275.8	CLNC DEL 128.025 270.8
--------------------------	---	--	-------------------------------	----------------------------------

*** Circling N of Rwy 8-26 not authorized.

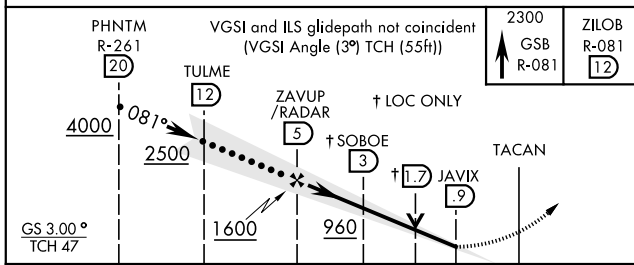


SE-2, 10 SEP 2020 to 08 OCT 2020

SE-2, 10 SEP 2020 to 08 OCT 2020

RADAR or DME REQUIRED

EMERG SAFE ALT 100 NM 3700



ELEV	109	TDZE	73
HIRL Rwy 8-26			
FAF to MAP 4.1 NM			
Knots	120	140	160 180 200
Min:Sec	2:03	1:45	1:32 1:22 1:14

GOLDSBORO, NORTH CAROLINA

35° 20' N-77° 58' W

SEYMOUR JOHNSON AFB (KGSB)

AmDt 7 07DEC17

HI-ILS or LOC Z RWY 8