

HI-TACAN Z RWY 26

TACAN GSB Chan 112	APCH CRS 261°	Rwy ldg 11,760 TDZE 109 Arprt Elev 109
--------------------	---------------	--

JAL-169 [USAF]

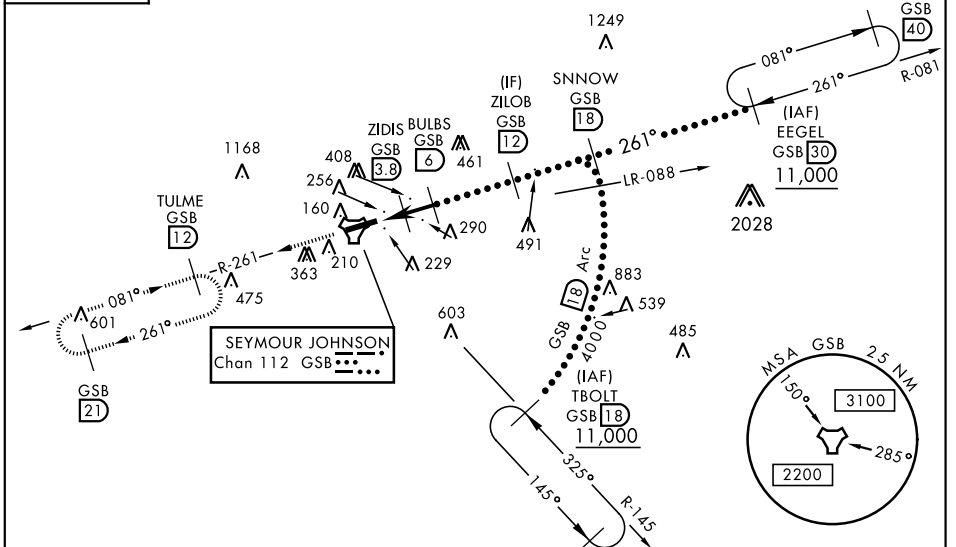
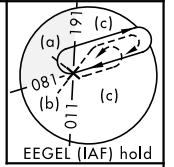
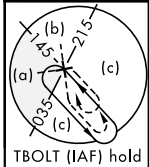
SEYMOUR JOHNSON AFB (KGSB)

▼ * When ALS inop, increase vis to 1 1/4 miles.
 ** Circling N of Rwy 8-26 not authorized.



MISSED APPROACH: Climb to 2200 via GSB R-261 to TULME and hold.

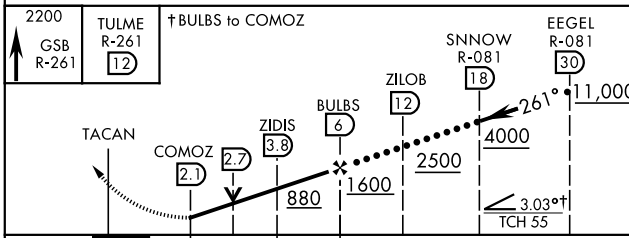
ATIS ★ 317.625	SEYMOUR JOHNSON APP CON 258°-110° 123.7 290.9 111°-257° 119.7 273.6	SEYMOUR JOHNSON TOWER ★ 126.25 370.875	GND CON 138.1 275.8	CLNC DEL 128.025 270.8
-------------------	---	---	------------------------	---------------------------



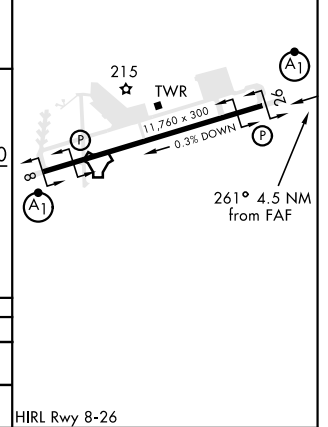
SE-2, 10 SEP 2020 to 08 OCT 2020

SE-2, 10 SEP 2020 to 08 OCT 2020

EMERG SAFE ALT 100 NM 3700



ELEV 109	TDZE 109
----------	----------



CATEGORY	C	D	E
S-26*	540/40	431 (500-3/4)	
CIRCLING**	680-1 1/2 571 (600-1 1/2)	700-2 591 (600-2)	760-2 1/4 651 (700-2 1/4)

HIRL Rwy 8-26

HI-TACAN Z RWY 26