

GOLDSBORO, NORTH CAROLINA

HI-TACAN Z RWY 8

TACAN GSB Chan 112	APCH CRS 081°	Rwy ldg 11,760 TDZE 73 Arprt Elev 109
------------------------------	-------------------------	--

JAL-169 [USAF]

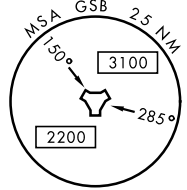
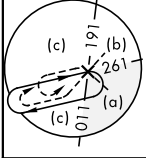
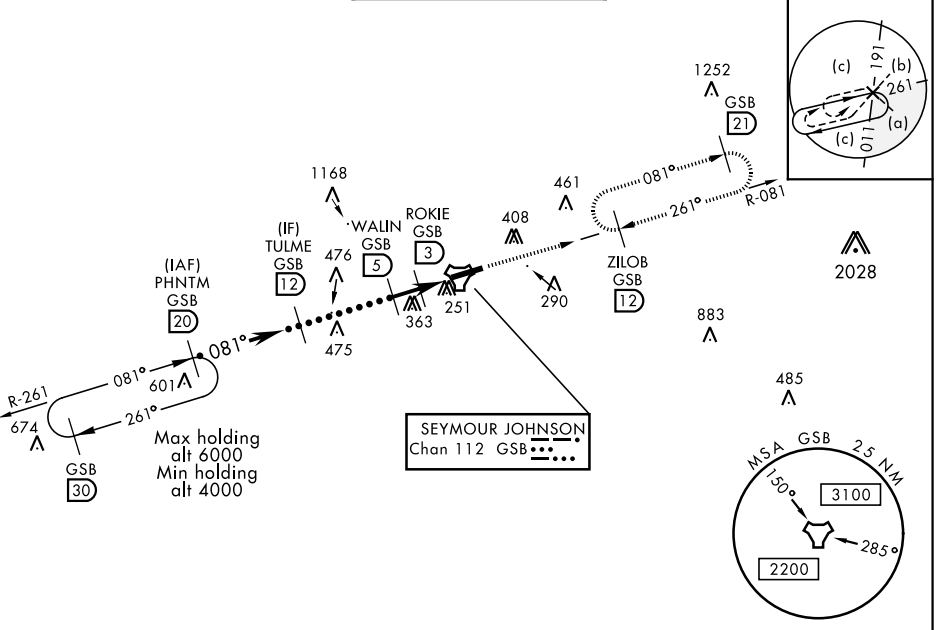
SEYMOUR JOHNSON AFB (KGSB)

▼ * When ALS inop, increase vis to 1 3/8 miles.
 ** Circling N of Rwy 8-26 not authorized.

 ALSF-1

 MISSED APPROACH: Climb to 2300 via GSB TACAN
 R-081 to ZILOB and hold.

ATIS ★ 317.625	SEYMOUR JOHNSON APP CON 258°-110° 123.7 290.9 111°-257° 119.7 273.6	SEYMOUR JOHNSON TOWER ★ 126.25 370.875	GND CON 138.1 275.8	CLNC DEL 128.025 270.8
--------------------------	---	--	-------------------------------	----------------------------------

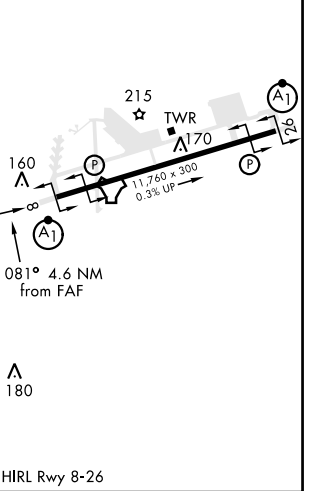
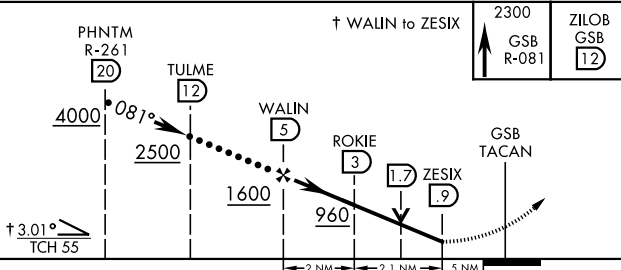


SE-2, 10 SEP 2020 to 08 OCT 2020

SE-2, 10 SEP 2020 to 08 OCT 2020

ELEV 109	TDZE 73
----------	---------

EMERG SAFE ALT 100 NM 3700



CATEGORY	C	D	E
S-8 *	560/50	487	(500-1)
CIRCLING **	680-1 1/2 571 (600-1 1/2)	700-2 591 (600-2)	760-2 1/4 651 (700-2 1/4)

▲ 180
 HIRL Rwy 8-26

GOLDSBORO, NORTH CAROLINA

35° 20' N - 77° 58' W

SEYMOUR JOHNSON AFB (KGSB)

HI-TACAN Z RWY 8

Amdt 7 05DEC19